



- ANAHA -

1108 AUAHI

TOWER RESIDENCES

RESIDENCE H

2 bedroom,
2 bathroom

Interior:
1,344 – 1,350 Sq Ft /
125 Sq M

RESIDENCE F

1 bedroom,
1 bathroom

Interior:
727 – 753 Sq Ft /
68 – 70 Sq M

RESIDENCE D

2 bedroom,
2 bathroom

Interior:
1,446 – 1,463 Sq Ft /
134 – 136 Sq M

RESIDENCE B

3 bedroom,
3 bathroom

Interior:
1,892 – 1,948 Sq Ft /
176 – 181 Sq M

RESIDENCE G

1 bedroom,
1 bathroom

Interior:
915 – 934 Sq Ft /
85 – 87 Sq M

RESIDENCE E

2 bedroom,
2 bathroom

Interior:
1,253 – 1,278 Sq Ft /
116 – 119 Sq M

RESIDENCE C

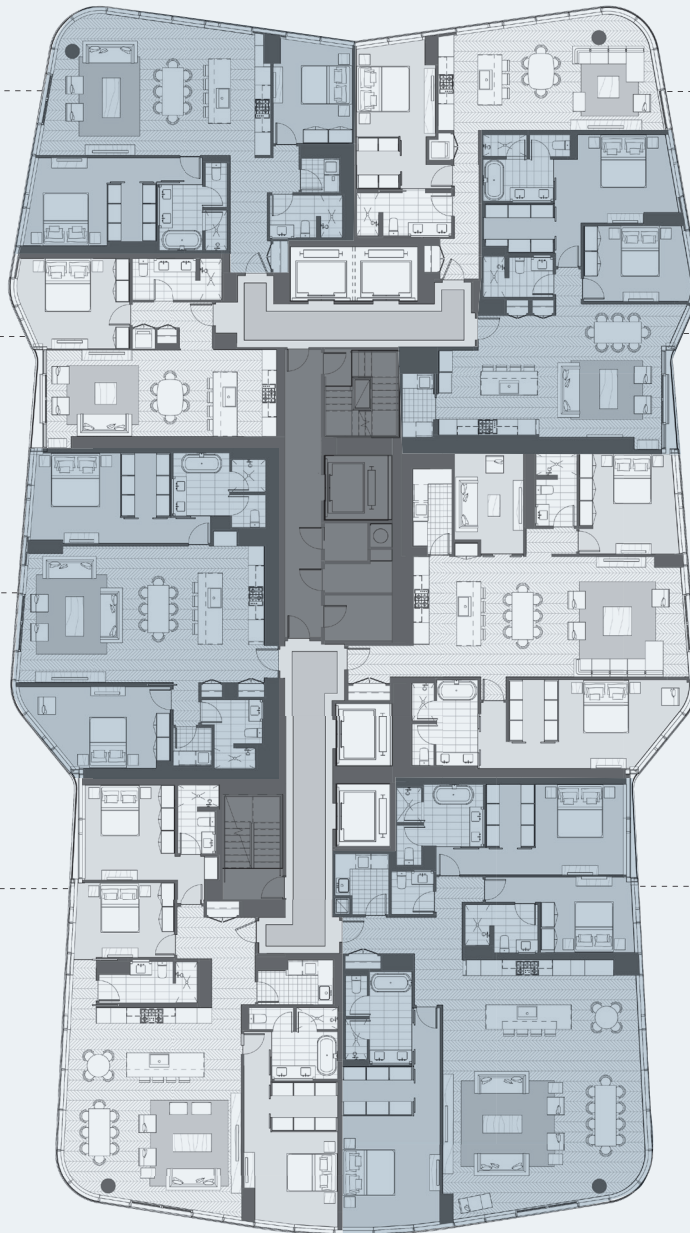
2 bedroom,
2 bathroom
Den

Interior:
1,693 – 1,708 Sq Ft /
157 – 159 Sq M

RESIDENCE A

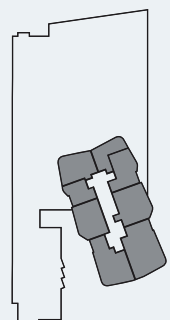
3 bedroom,
3.5 bathroom

Interior:
2,454 – 2,489 Sq Ft /
228 – 231 Sq M



Mountain

Sunset



Ocean

Diamond Head

WARNING: THE CALIFORNIA DEPARTMENT OF REAL ESTATE HAS NOT INSPECTED, EXAMINED OR QUALIFIED THIS OFFERING.

This is not intended to be an offer to sell nor a solicitation of offers to buy real estate in Ward Village development to residents of Connecticut, Idaho, Illinois, New York, Oregon or South Carolina, or to residents of any other jurisdiction where prohibited by law. No offering can be made to residents of New York until an offering plan is filed with the Department of Law of the State of New York. Ward Village is a proposed planned master development in Honolulu, Hawaii that does not yet exist. Exclusive Project Broker Ward Village Properties, LLC. Copyright 2016. Equal Housing Opportunity.



- ANAHA -

1108 AUAHI

PENTHOUSES

PENTHOUSE E

2 bedroom,
2 bathroom

Interior:
1,351 Sq Ft / 126 Sq M

PENTHOUSE D

2 bedroom,
2.5 bathroom

Interior:
1,735 – 1,740 Sq Ft /
161 – 162 Sq M

PENTHOUSE B

3 bedroom,
3 bathroom

Interior:
2,473 – 2,496 Sq Ft /
230 – 232 Sq M



PENTHOUSE C

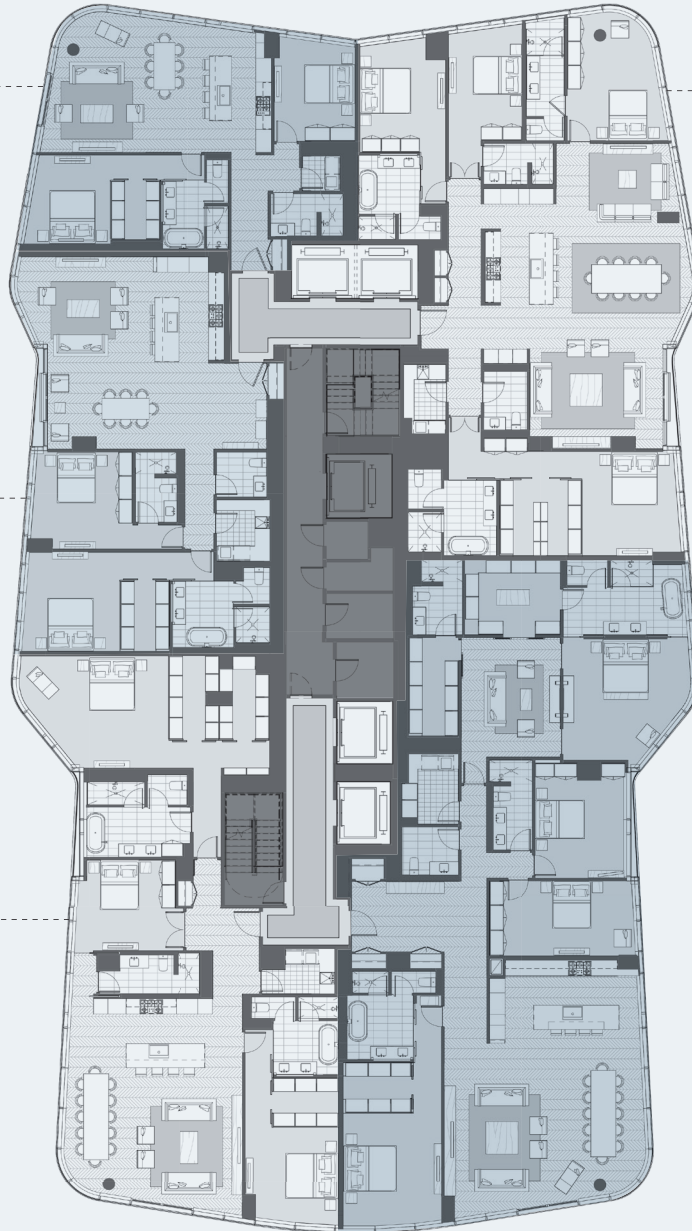
4 bedroom,
4.5 bathroom

Interior:
2,901 – 2,915 Sq Ft /
270 – 271 Sq M

PENTHOUSE A

4 bedroom,
4.5 bathroom
Sitting room

Interior:
3,541 – 3,543 Sq Ft /
329 Sq M



Mountain

Sunset

Diamond Head

Ocean

WARNING: THE CALIFORNIA DEPARTMENT OF REAL ESTATE HAS NOT INSPECTED, EXAMINED OR QUALIFIED THIS OFFERING.

This is not intended to be an offer to sell nor a solicitation of offers to buy real estate in Ward Village development to residents of Connecticut, Idaho, Illinois, New York, Oregon or South Carolina, or to residents of any other jurisdiction where prohibited by law. No offering can be made to residents of New York until an offering plan is filed with the Department of Law of the State of New York. Ward Village is a proposed planned master development in Honolulu, Hawaii that does not yet exist. Exclusive Project Broker Ward Village Properties, LLC. Copyright 2016. Equal Housing Opportunity.



WARD VILLAGE.

HONOLULU, HI

- ANAHA -
1108 AUAHI

RESIDENCE A - STACK A

LEVELS

8-11, 16-19, 24-27, 32-33

3 bedroom
3.5 bathroom

Interior Size
2,454 Sq Ft / 228 Sq M

Mountain

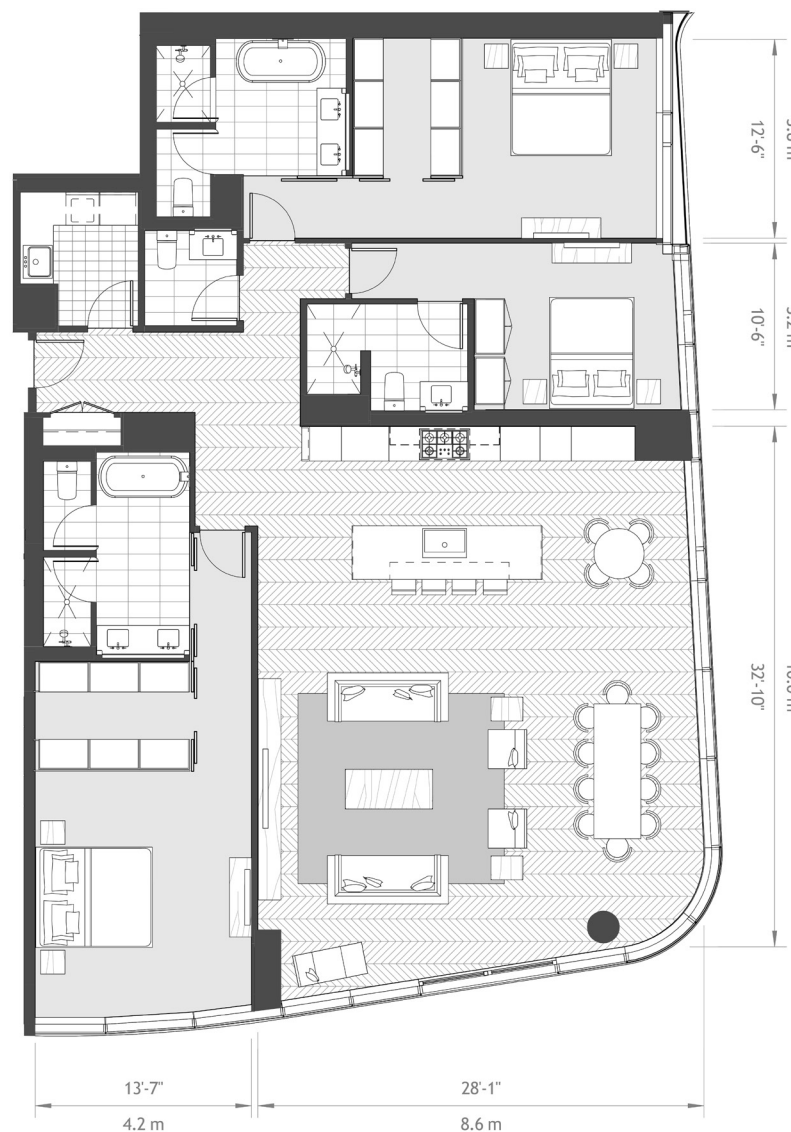
Sunset

Diamond Head

Ocean

Howard Hughes.

www.wardvillage.com



32 - 33
24 - 27
16 - 19
8 - 11

Scale: Not to scale. All dimensions are approximate.

DISCLAIMER

Obtain the Property Report required by Federal law and read it before signing anything. No Federal agency has judged the merits or value, if any, of this property. Ward Village is a proposed planned master development in Honolulu, Hawai'i that does not yet exist. Photos and drawings and other visual depictions in this advertisement are for illustrative purposes only and do not represent the amenities or facilities in Ward Village and should not be relied upon in deciding to purchase or lease an interest in the development. The Developer makes no guarantee, representation or warranty whatsoever that the developments, facilities or improvements depicted will ultimately appear as shown. This is not intended to be an offering or solicitation of sale. Square footage figures for each residence shown herein are approximations and no representation is made as to the accuracy of such figures. Exclusive Project Broker Ward Village Properties LLC. Copyright © 2016.



WARD VILLAGE.

HONOLULU, HI

- ANAHA -
1108 AUAHI

RESIDENCE B - STACK A

LEVELS

8-11, 16-19, 24-27, 32-33

3 bedroom
3.5 bathroom

Interior Size

1,892 Sq Ft / 176 Sq M

Mountain

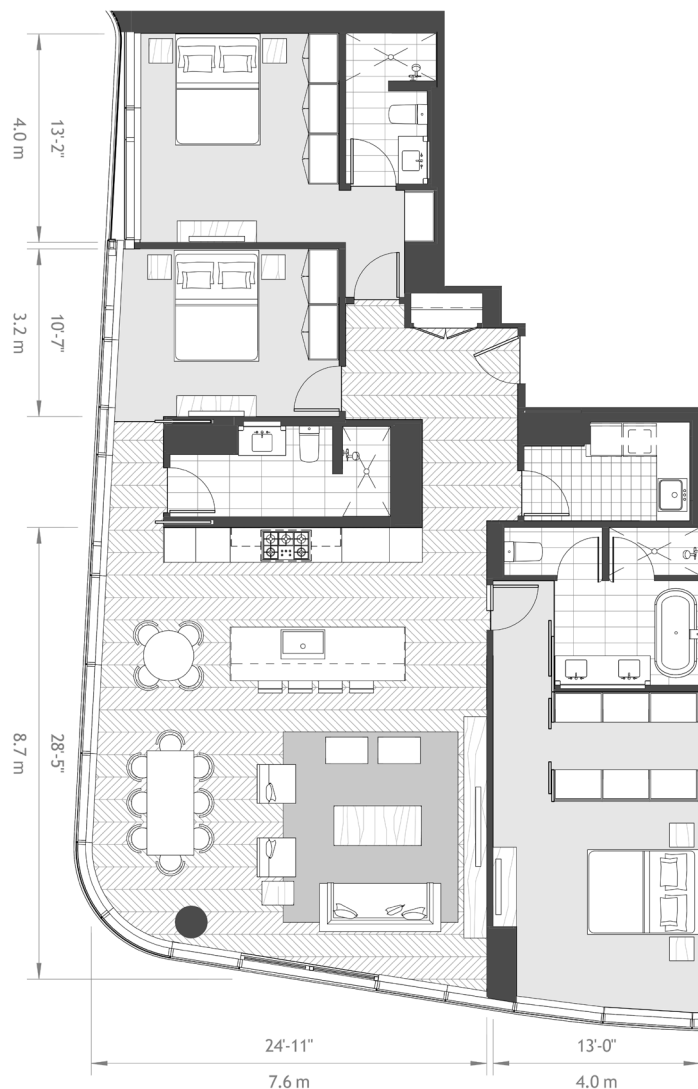
Sunset

Diamond Head

Ocean

Howard Hughes.

www.wardvillage.com



32 - 33
24 - 27
16 - 19
8 - 11

Scale: Not to scale. All dimensions are approximate.

DISCLAIMER

Obtain the Property Report required by Federal law and read it before signing anything. No Federal agency has judged the merits or value, if any, of this property. Ward Village is a proposed planned master development in Honolulu, Hawai'i that does not yet exist. Photos and drawings and other visual depictions in this advertisement are for illustrative purposes only and do not represent the amenities or facilities in Ward Village and should not be relied upon in deciding to purchase or lease an interest in the development. The Developer makes no guarantee, representation or warranty whatsoever that the developments, facilities or improvements depicted will ultimately appear as shown. This is not intended to be an offering or solicitation of sale. Square footage figures for each residence shown herein are approximations and no representation is made as to the accuracy of such figures. Exclusive Project Broker Ward Village Properties LLC. Copyright © 2016.



WARD VILLAGE.

HONOLULU, HI

- ANAHA -
1108 AUAHI

RESIDENCE B - STACK A

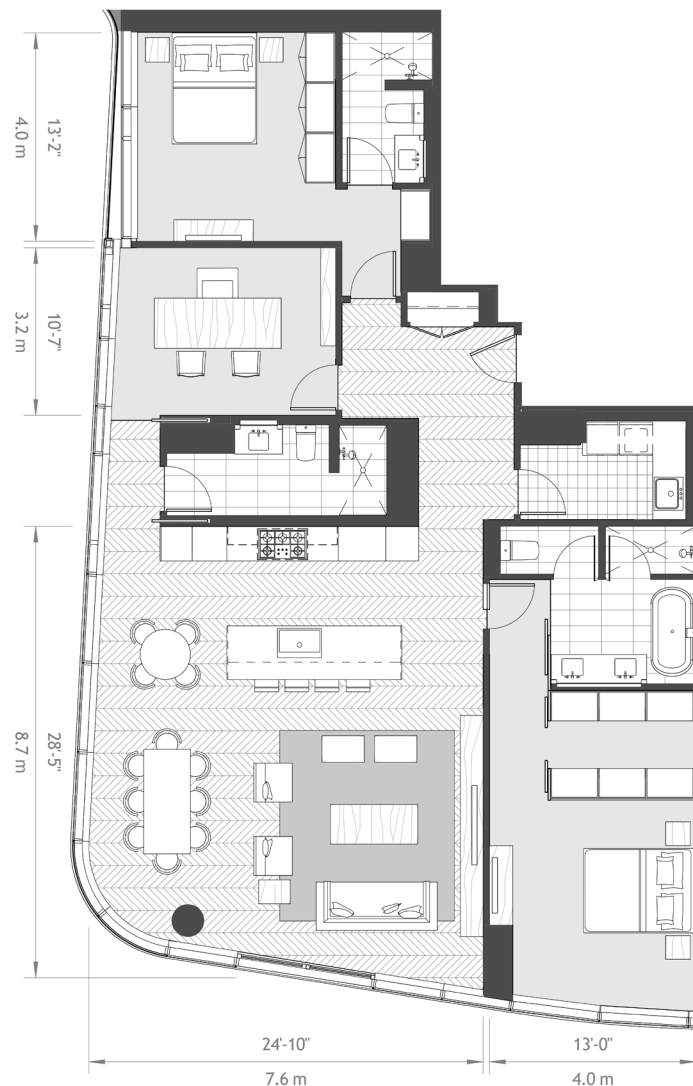
LEVELS

8-11, 16-19, 24-27, 32-33

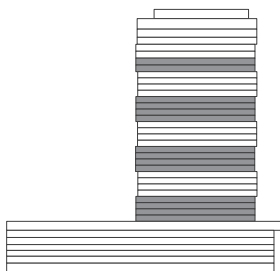
2 bedroom
3 bathroom
Den

Interior Size

1,892 Sq Ft / 176 Sq M



32 - 33
24 - 27
16 - 19
8 - 11



Scale: Not to scale. All dimensions are approximate.

Mountain

Sunset

Diamond Head

Ocean

Howard Hughes.

www.wardvillage.com

DISCLAIMER

Obtain the Property Report required by Federal law and read it before signing anything. No Federal agency has judged the merits or value, if any, of this property. Ward Village is a proposed planned master development in Honolulu, Hawai'i that does not yet exist. Photos and drawings and other visual depictions in this advertisement are for illustrative purposes only and do not represent the amenities or facilities in Ward Village and should not be relied upon in deciding to purchase or lease an interest in the development. The Developer makes no guarantee, representation or warranty whatsoever that the developments, facilities or improvements depicted will ultimately appear as shown. This is not intended to be an offering or solicitation of sale. Square footage figures for each residence shown herein are approximations and no representation is made as to the accuracy of such figures. Exclusive Project Broker Ward Village Properties LLC. Copyright © 2016.



WARD VILLAGE.

HONOLULU, HI

- ANAHA -

1108 AUAHI

RESIDENCE C - STACK A

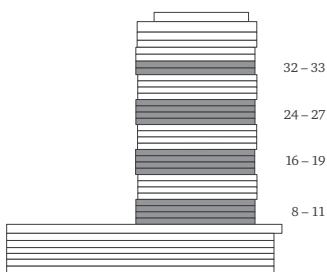
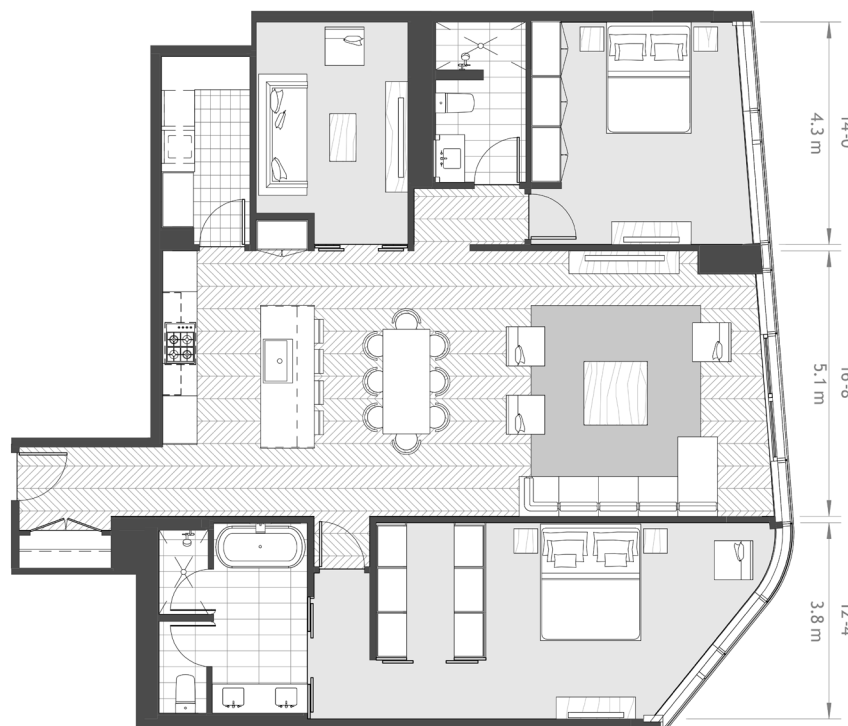
LEVELS

8-11, 16-19, 24-27, 32-33

2 bedroom
2 bathroom
Den

Interior Size

1,708 Sq Ft / 159 Sq M



Scale: Not to scale. All dimensions are approximate.

Mountain

Sunset

Diamond Head

Ocean

Howard Hughes.

www.wardvillage.com

DISCLAIMER

Obtain the Property Report required by Federal law and read it before signing anything. No Federal agency has judged the merits or value, if any, of this property. Ward Village is a proposed planned master development in Honolulu, Hawai'i that does not yet exist. Photos and drawings and other visual depictions in this advertisement are for illustrative purposes only and do not represent the amenities or facilities in Ward Village and should not be relied upon in deciding to purchase or lease an interest in the development. The Developer makes no guarantee, representation or warranty whatsoever that the developments, facilities or improvements depicted will ultimately appear as shown. This is not intended to be an offering or solicitation of sale. Square footage figures for each residence shown herein are approximations and no representation is made as to the accuracy of such figures. Exclusive Project Broker Ward Village Properties LLC. Copyright © 2016.



WARD VILLAGE.

HONOLULU, HI

- ANAHA -

1108 AUAHI

RESIDENCE D - STACK A

LEVELS

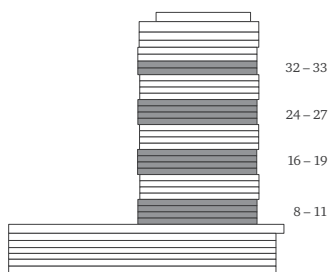
8-11, 16-19, 24-27, 32-33

2 bedroom

2 bathroom

Interior Size

1,463 Sq Ft / 136 Sq M



Scale: Not to scale. All dimensions are approximate.

Mountain

Sunset

Diamond Head

Ocean

Howard Hughes.

www.wardvillage.com

DISCLAIMER

Obtain the Property Report required by Federal law and read it before signing anything. No Federal agency has judged the merits or value, if any, of this property. Ward Village is a proposed planned master development in Honolulu, Hawai'i that does not yet exist. Photos and drawings and other visual depictions in this advertisement are for illustrative purposes only and do not represent the amenities or facilities in Ward Village and should not be relied upon in deciding to purchase or lease an interest in the development. The Developer makes no guarantee, representation or warranty whatsoever that the developments, facilities or improvements depicted will ultimately appear as shown. This is not intended to be an offering or solicitation of sale. Square footage figures for each residence shown herein are approximations and no representation is made as to the accuracy of such figures. Exclusive Project Broker Ward Village Properties LLC. Copyright © 2016.



WARD VILLAGE.

HONOLULU, HI

- ANAHA -

1108 AUAHI

RESIDENCE E - STACK A

LEVELS

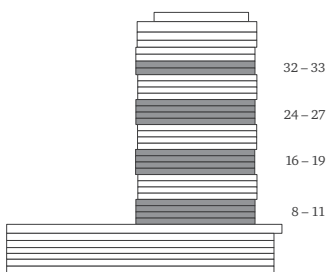
8-11, 16-19, 24-27, 32-33

2 bedroom

2 bathroom

Interior Size

1,278 Sq Ft / 119 Sq M



Scale: Not to scale. All dimensions are approximate.

DISCLAIMER

Obtain the Property Report required by Federal law and read it before signing anything. No Federal agency has judged the merits or value, if any, of this property. Ward Village is a proposed planned master development in Honolulu, Hawai'i that does not yet exist. Photos and drawings and other visual depictions in this advertisement are for illustrative purposes only and do not represent the amenities or facilities in Ward Village and should not be relied upon in deciding to purchase or lease an interest in the development. The Developer makes no guarantee, representation or warranty whatsoever that the developments, facilities or improvements depicted will ultimately appear as shown. This is not intended to be an offering or solicitation of sale. Square footage figures for each residence shown herein are approximations and no representation is made as to the accuracy of such figures. Exclusive Project Broker Ward Village Properties LLC. Copyright © 2016.

Mountain

Sunset

Diamond Head

Ocean

Howard Hughes.

www.wardvillage.com



WARD VILLAGE.

HONOLULU, HI

- ANAHA -
1108 AUAHI

RESIDENCE F - STACK A

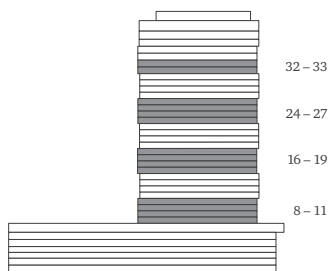
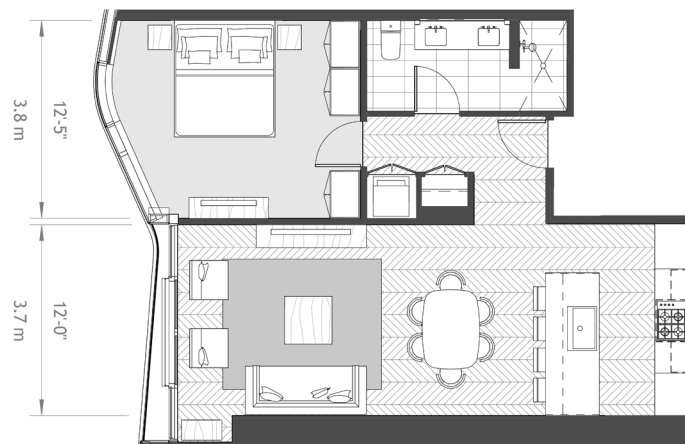
LEVELS

8-11, 16-19, 24-27, 32-33

1 bedroom
1 bathroom

Interior Size

753 Sq Ft / 70 Sq M

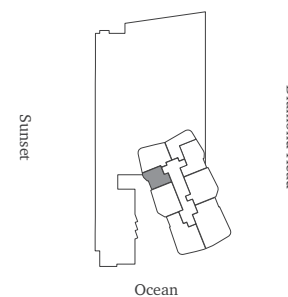


Scale: Not to scale. All dimensions are approximate.

DISCLAIMER

Obtain the Property Report required by Federal law and read it before signing anything. No Federal agency has judged the merits or value, if any, of this property. Ward Village is a proposed planned master development in Honolulu, Hawai'i that does not yet exist. Photos and drawings and other visual depictions in this advertisement are for illustrative purposes only and do not represent the amenities or facilities in Ward Village and should not be relied upon in deciding to purchase or lease an interest in the development. The Developer makes no guarantee, representation or warranty whatsoever that the developments, facilities or improvements depicted will ultimately appear as shown. This is not intended to be an offering or solicitation of sale. Square footage figures for each residence shown herein are approximations and no representation is made as to the accuracy of such figures. Exclusive Project Broker Ward Village Properties LLC. Copyright © 2016.

Mountain



Sunset

Diamond Head

Ocean

Howard Hughes.

www.wardvillage.com



WARD VILLAGE.

HONOLULU, HI

- ANAHA -
1108 AUAHI

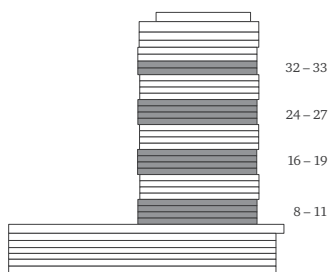
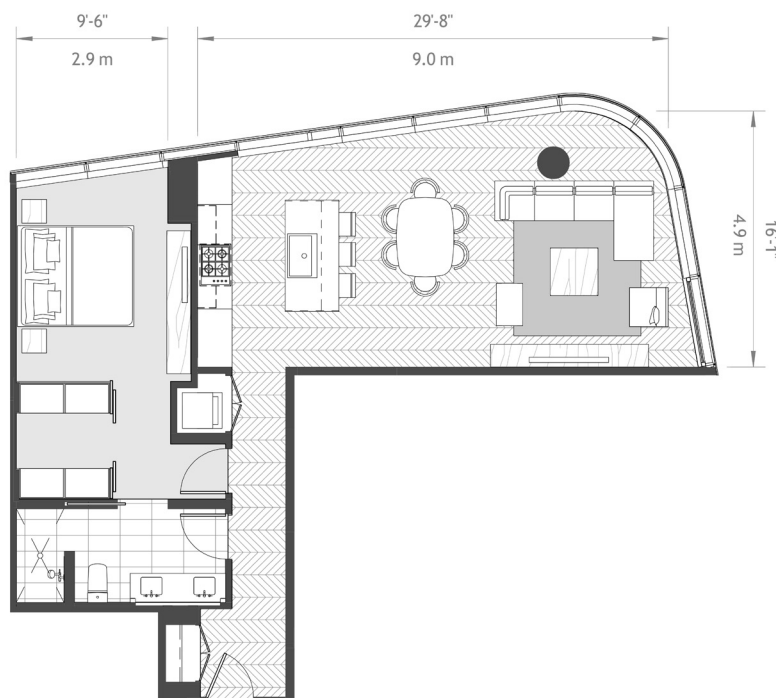
RESIDENCE G - STACK A

LEVELS

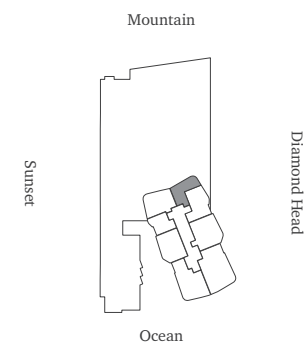
8-11, 16-19, 24-27, 32-33

1 bedroom
1 bathroom

Interior Size
934 Sq Ft / 87 Sq M



Scale: Not to scale. All dimensions are approximate.



Howard Hughes.

www.wardvillage.com

DISCLAIMER

Obtain the Property Report required by Federal law and read it before signing anything. No Federal agency has judged the merits or value, if any, of this property. Ward Village is a proposed planned master development in Honolulu, Hawai'i that does not yet exist. Photos and drawings and other visual depictions in this advertisement are for illustrative purposes only and do not represent the amenities or facilities in Ward Village and should not be relied upon in deciding to purchase or lease an interest in the development. The Developer makes no guarantee, representation or warranty whatsoever that the developments, facilities or improvements depicted will ultimately appear as shown. This is not intended to be an offering or solicitation of sale. Square footage figures for each residence shown herein are approximations and no representation is made as to the accuracy of such figures. Exclusive Project Broker Ward Village Properties LLC. Copyright © 2016.



WARD VILLAGE.

HONOLULU, HI

- ANAHA -
1108 AUAHI

RESIDENCE H - STACK A

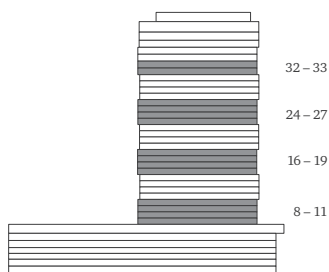
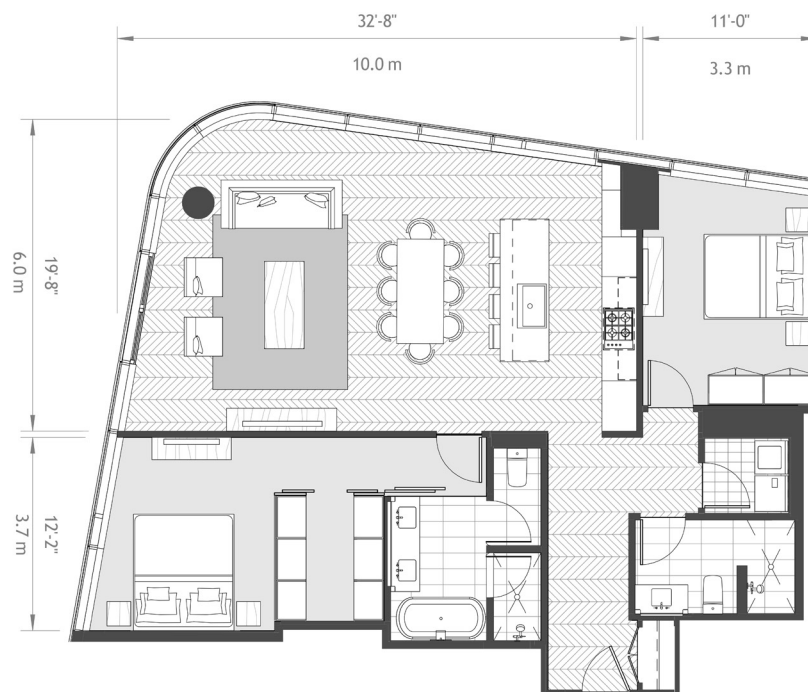
LEVELS

8-11, 16-19, 24-27, 32-33

2 bedroom
2 bathroom

Interior Size

1,350 Sq Ft / 125 Sq M



Scale: Not to scale. All dimensions are approximate.

DISCLAIMER

Obtain the Property Report required by Federal law and read it before signing anything. No Federal agency has judged the merits or value, if any, of this property. Ward Village is a proposed planned master development in Honolulu, Hawai'i that does not yet exist. Photos and drawings and other visual depictions in this advertisement are for illustrative purposes only and do not represent the amenities or facilities in Ward Village and should not be relied upon in deciding to purchase or lease an interest in the development. The Developer makes no guarantee, representation or warranty whatsoever that the developments, facilities or improvements depicted will ultimately appear as shown. This is not intended to be an offering or solicitation of sale. Square footage figures for each residence shown herein are approximations and no representation is made as to the accuracy of such figures. Exclusive Project Broker Ward Village Properties LLC. Copyright © 2016.

Mountain

Sunset

Diamond Head

Ocean

Howard Hughes.

www.wardvillage.com



WARD VILLAGE.

HONOLULU, HI

- ANAHA -
1108 AUAHI

RESIDENCE A - STACK B

LEVELS

3-6, 12-15, 20-23, 28-31

3 bedroom
3.5 bathroom

Interior Size

2,489 Sq Ft / 231 Sq M

Mountain

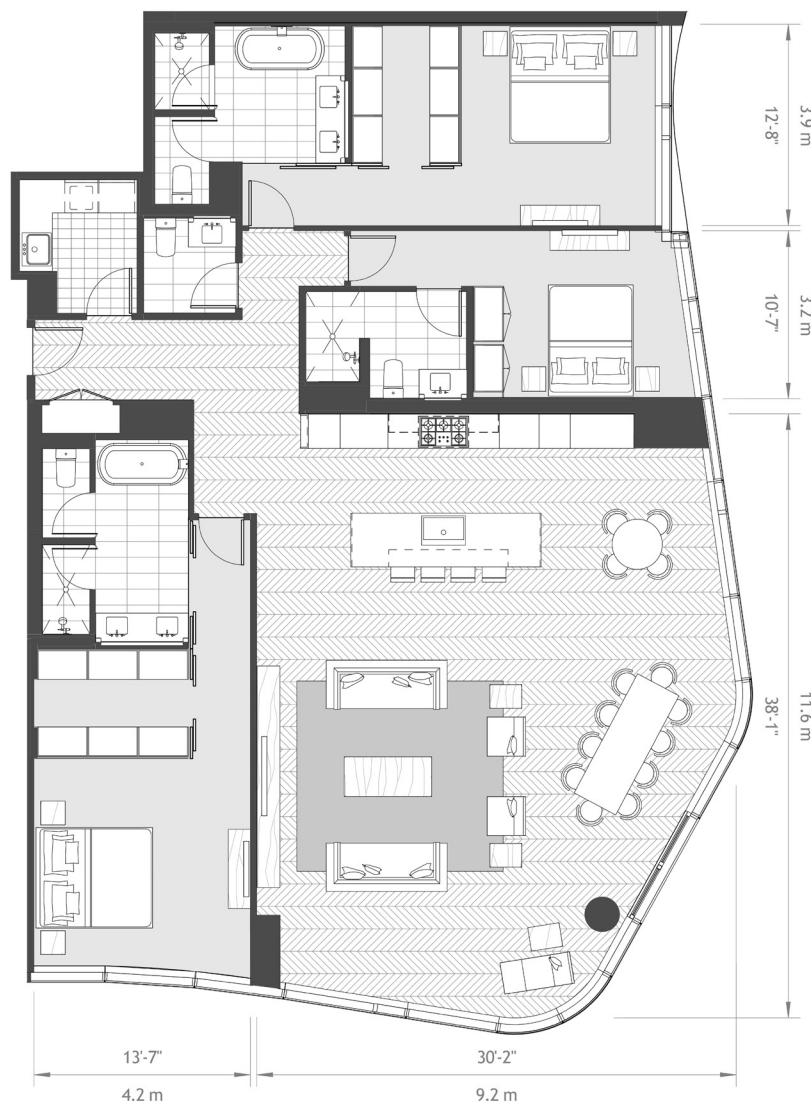
Sunset

Diamond Head

Ocean

Howard Hughes.

www.wardvillage.com



28 - 31

20 - 23

12 - 15

3 - 6

Scale: Not to scale. All dimensions are approximate.

DISCLAIMER

Obtain the Property Report required by Federal law and read it before signing anything. No Federal agency has judged the merits or value, if any, of this property. Ward Village is a proposed planned master development in Honolulu, Hawai'i that does not yet exist. Photos and drawings and other visual depictions in this advertisement are for illustrative purposes only and do not represent the amenities or facilities in Ward Village and should not be relied upon in deciding to purchase or lease an interest in the development. The Developer makes no guarantee, representation or warranty whatsoever that the developments, facilities or improvements depicted will ultimately appear as shown. This is not intended to be an offering or solicitation of sale. Square footage figures for each residence shown herein are approximations and no representation is made as to the accuracy of such figures. Exclusive Project Broker Ward Village Properties LLC. Copyright © 2016.



WARD VILLAGE.

HONOLULU, HI

- ANAHA -
1108 AUAHI

RESIDENCE B - STACK B

LEVELS

3-6, 12-15, 20-23, 28-31

3 bedroom
3 bathroom

Interior Size

1,948 Sq Ft / 181 Sq M

Mountain

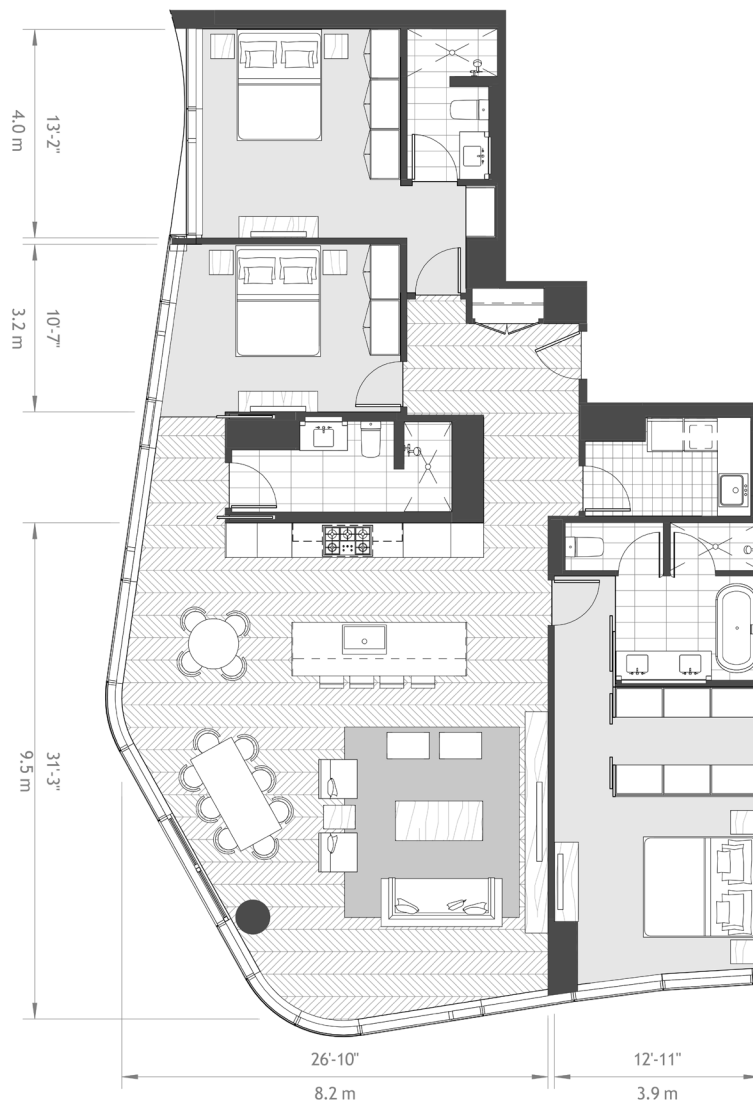
Sunset

Diamond Head

Ocean

Howard Hughes.

www.wardvillage.com



28 - 31

20 - 23

12 - 15

3 - 6

Scale: Not to scale. All dimensions are approximate.

DISCLAIMER

Obtain the Property Report required by Federal law and read it before signing anything. No Federal agency has judged the merits or value, if any, of this property. Ward Village is a proposed planned master development in Honolulu, Hawai'i that does not yet exist. Photos and drawings and other visual depictions in this advertisement are for illustrative purposes only and do not represent the amenities or facilities in Ward Village and should not be relied upon in deciding to purchase or lease an interest in the development. The Developer makes no guarantee, representation or warranty whatsoever that the developments, facilities or improvements depicted will ultimately appear as shown. This is not intended to be an offering or solicitation of sale. Square footage figures for each residence shown herein are approximations and no representation is made as to the accuracy of such figures. Exclusive Project Broker Ward Village Properties LLC. Copyright © 2016.



WARD VILLAGE.

HONOLULU, HI

- ANAHA -
1108 AUAHI

RESIDENCE B - STACK B

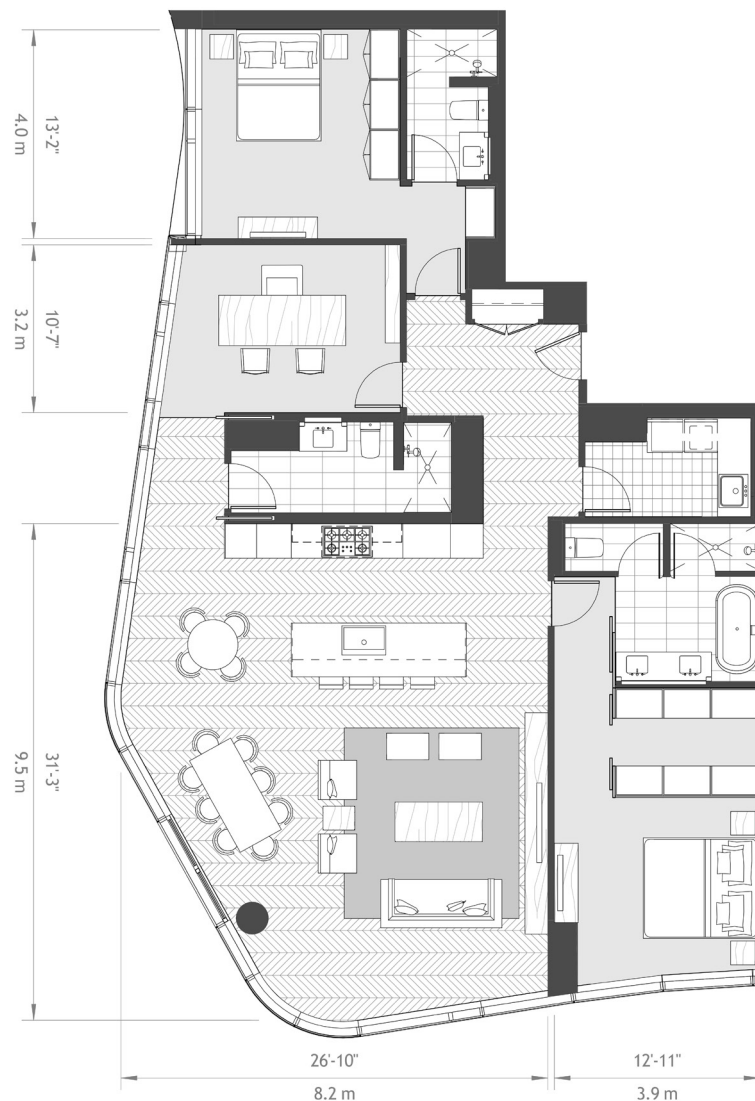
LEVELS

3-6, 12-15, 20-23, 28-31

2 bedroom
3 bathroom
Den

Interior Size

1,948 Sq Ft / 181 Sq M



28 - 31

20 - 23

12 - 15

3 - 6

Scale: Not to scale. All dimensions are approximate.

DISCLAIMER

Obtain the Property Report required by Federal law and read it before signing anything. No Federal agency has judged the merits or value, if any, of this property. Ward Village is a proposed planned master development in Honolulu, Hawai'i that does not yet exist. Photos and drawings and other visual depictions in this advertisement are for illustrative purposes only and do not represent the amenities or facilities in Ward Village and should not be relied upon in deciding to purchase or lease an interest in the development. The Developer makes no guarantee, representation or warranty whatsoever that the developments, facilities or improvements depicted will ultimately appear as shown. This is not intended to be an offering or solicitation of sale. Square footage figures for each residence shown herein are approximations and no representation is made as to the accuracy of such figures. Exclusive Project Broker Ward Village Properties LLC. Copyright © 2016.

Mountain

Sunset

Diamond Head

Ocean

Howard Hughes.

www.wardvillage.com



WARD VILLAGE.

HONOLULU, HI

- ANAHA -

1108 AUAHI

RESIDENCE C - STACK B

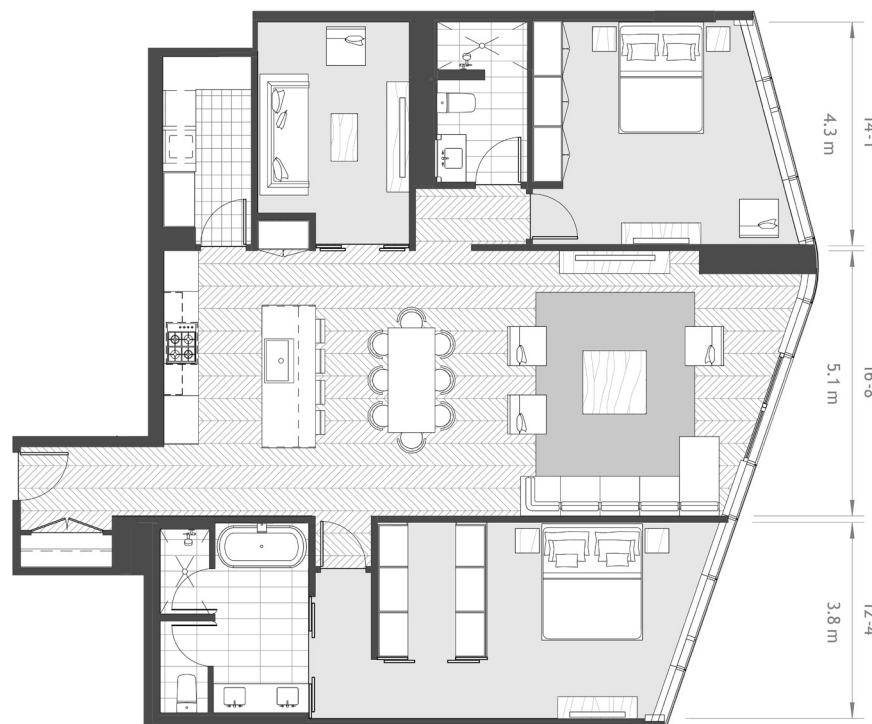
LEVELS

12-15, 20-23, 28-31

2 bedroom
2 bathroom
Den

Interior Size

1,693 Sq Ft / 157 Sq M



28 - 31

20 - 23

12 - 15

Mountain

Sunset

Diamond Head

Ocean

Howard Hughes.

www.wardvillage.com

Scale: Not to scale. All dimensions are approximate.

DISCLAIMER

Obtain the Property Report required by Federal law and read it before signing anything. No Federal agency has judged the merits or value, if any, of this property. Ward Village is a proposed planned master development in Honolulu, Hawai'i that does not yet exist. Photos and drawings and other visual depictions in this advertisement are for illustrative purposes only and do not represent the amenities or facilities in Ward Village and should not be relied upon in deciding to purchase or lease an interest in the development. The Developer makes no guarantee, representation or warranty whatsoever that the developments, facilities or improvements depicted will ultimately appear as shown. This is not intended to be an offering or solicitation of sale. Square footage figures for each residence shown herein are approximations and no representation is made as to the accuracy of such figures. Exclusive Project Broker Ward Village Properties LLC. Copyright © 2016.



WARD VILLAGE.

HONOLULU, HI

- A N A H A -

1108 AUAHI

RESIDENCE D - STACK B

LEVELS

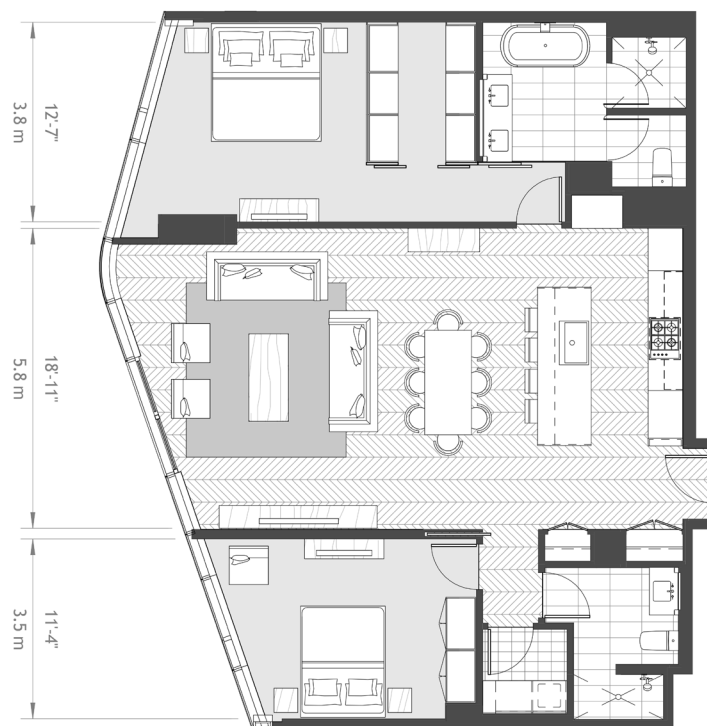
12-15, 20-23, 28-31

2 bedroom

2 bathroom

Interior Size

1,446 Sq Ft / 134 Sq M



28 - 31

20 - 23

12 - 15

Mountain

Sunset

Diamond Head

Ocean

Howard Hughes.

www.wardvillage.com

Scale: Not to scale. All dimensions are approximate.

DISCLAIMER

Obtain the Property Report required by Federal law and read it before signing anything. No Federal agency has judged the merits or value, if any, of this property. Ward Village is a proposed planned master development in Honolulu, Hawai'i that does not yet exist. Photos and drawings and other visual depictions in this advertisement are for illustrative purposes only and do not represent the amenities or facilities in Ward Village and should not be relied upon in deciding to purchase or lease an interest in the development. The Developer makes no guarantee, representation or warranty whatsoever that the developments, facilities or improvements depicted will ultimately appear as shown. This is not intended to be an offering or solicitation of sale. Square footage figures for each residence shown herein are approximations and no representation is made as to the accuracy of such figures. Exclusive Project Broker Ward Village Properties LLC. Copyright © 2016.



WARD VILLAGE®

HONOLULU, HI

- ANAHA -
1108 AUAHI

RESIDENCE E - STACK B

LEVELS

12-15, 20-23, 28-31

2 bedroom
2 bathroom

Interior Size

1,253 Sq Ft / 116 Sq M



28 - 31

20 - 23

12 - 15

Mountain

Sunset

Diamond Head

Ocean

Howard Hughes®

www.wardvillage.com

Scale: Not to scale. All dimensions are approximate.

DISCLAIMER

Obtain the Property Report required by Federal law and read it before signing anything. No Federal agency has judged the merits or value, if any, of this property. Ward Village is a proposed planned master development in Honolulu, Hawai'i that does not yet exist. Photos and drawings and other visual depictions in this advertisement are for illustrative purposes only and do not represent the amenities or facilities in Ward Village and should not be relied upon in deciding to purchase or lease an interest in the development. The Developer makes no guarantee, representation or warranty whatsoever that the developments, facilities or improvements depicted will ultimately appear as shown. This is not intended to be an offering or solicitation of sale. Square footage figures for each residence shown herein are approximations and no representation is made as to the accuracy of such figures. Exclusive Project Broker Ward Village Properties LLC. Copyright © 2016.



WARD VILLAGE.

HONOLULU, HI

- ANAHA -
1108 AUAHI

RESIDENCE F - STACK B

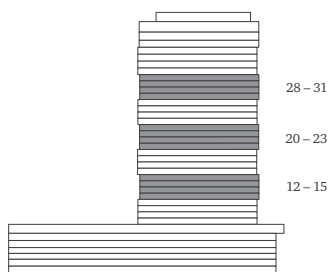
LEVELS

12-15, 20-23, 28-31

1 bedroom
1 bathroom

Interior Size

727 Sq Ft / 68 Sq M



Scale: Not to scale. All dimensions are approximate.

DISCLAIMER

Obtain the Property Report required by Federal law and read it before signing anything. No Federal agency has judged the merits or value, if any, of this property. Ward Village is a proposed planned master development in Honolulu, Hawai'i that does not yet exist. Photos and drawings and other visual depictions in this advertisement are for illustrative purposes only and do not represent the amenities or facilities in Ward Village and should not be relied upon in deciding to purchase or lease an interest in the development. The Developer makes no guarantee, representation or warranty whatsoever that the developments, facilities or improvements depicted will ultimately appear as shown. This is not intended to be an offering or solicitation of sale. Square footage figures for each residence shown herein are approximations and no representation is made as to the accuracy of such figures. Exclusive Project Broker Ward Village Properties LLC. Copyright © 2016.

Mountain

Sunset

Diamond Head

Ocean

Howard Hughes.

www.wardvillage.com



WARD VILLAGE.

HONOLULU, HI

- ANAHA -
1108 AUAHI

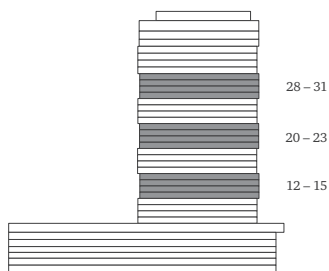
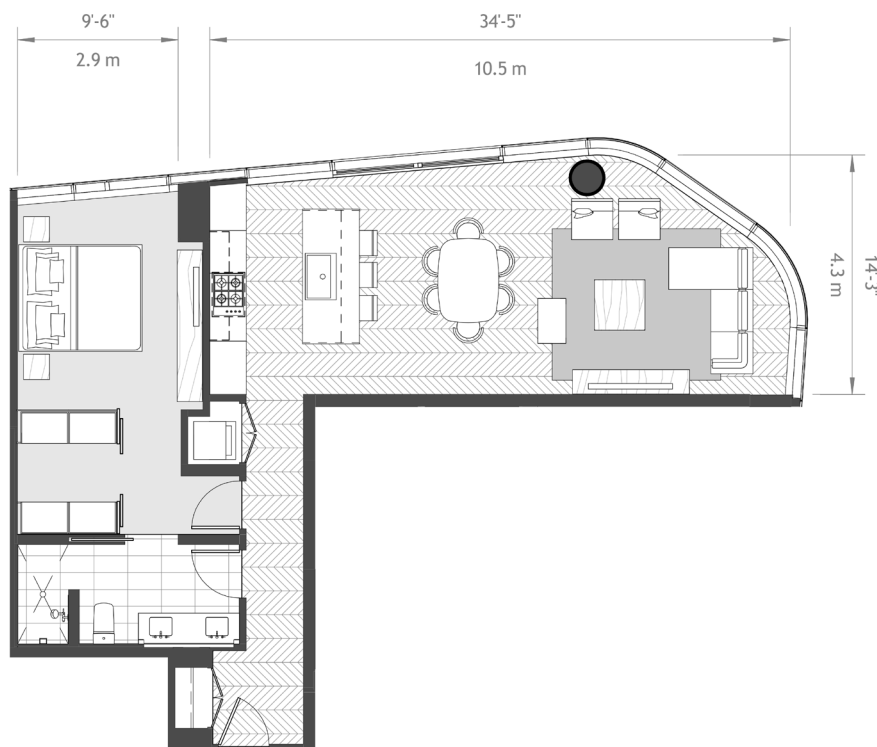
RESIDENCE G - STACK B

LEVELS

12-15, 20-23, 28-31

1 bedroom
1 bathroom

Interior Size
915 Sq Ft / 85 Sq M



28 - 31
20 - 23
12 - 15

Scale: Not to scale. All dimensions are approximate.

DISCLAIMER

Obtain the Property Report required by Federal law and read it before signing anything. No Federal agency has judged the merits or value, if any, of this property. Ward Village is a proposed planned master development in Honolulu, Hawai'i that does not yet exist. Photos and drawings and other visual depictions in this advertisement are for illustrative purposes only and do not represent the amenities or facilities in Ward Village and should not be relied upon in deciding to purchase or lease an interest in the development. The Developer makes no guarantee, representation or warranty whatsoever that the developments, facilities or improvements depicted will ultimately appear as shown. This is not intended to be an offering or solicitation of sale. Square footage figures for each residence shown herein are approximations and no representation is made as to the accuracy of such figures. Exclusive Project Broker Ward Village Properties LLC. Copyright © 2016.

Mountain

Sunset

Diamond Head

Ocean

Howard Hughes.

www.wardvillage.com



WARD VILLAGE.

HONOLULU, HI

- ANAHA -
1108 AUAHI

RESIDENCE H - STACK B

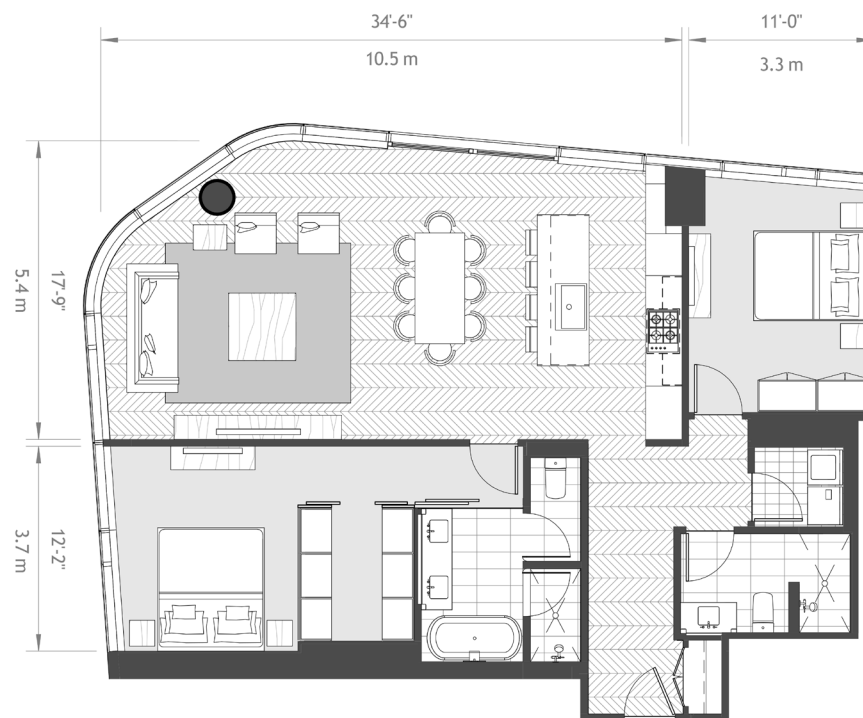
LEVELS

12-15, 20-23, 28-31

2 bedroom
2 bathroom

Interior Size

1,344 Sq Ft / 125 Sq M



28 - 31

20 - 23

12 - 15

Mountain

Sunset

Diamond Head

Ocean

Howard Hughes.

www.wardvillage.com

Scale: Not to scale. All dimensions are approximate.

DISCLAIMER

Obtain the Property Report required by Federal law and read it before signing anything. No Federal agency has judged the merits or value, if any, of this property. Ward Village is a proposed planned master development in Honolulu, Hawai'i that does not yet exist. Photos and drawings and other visual depictions in this advertisement are for illustrative purposes only and do not represent the amenities or facilities in Ward Village and should not be relied upon in deciding to purchase or lease an interest in the development. The Developer makes no guarantee, representation or warranty whatsoever that the developments, facilities or improvements depicted will ultimately appear as shown. This is not intended to be an offering or solicitation of sale. Square footage figures for each residence shown herein are approximations and no representation is made as to the accuracy of such figures. Exclusive Project Broker Ward Village Properties LLC. Copyright © 2016.



WARD VILLAGE.

HONOLULU, HI

- ANAHA -
1108 AUAHI

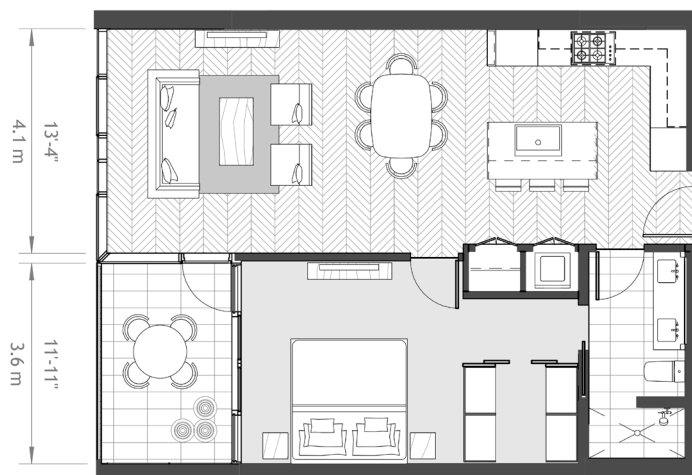
1 BEDROOM FLAT A

LEVELS	UNITS
4-6	P 1 BR-404 – 410, 413 – 415, 504 – 510, 513 – 515, 604 – 610, 613 – 615

1 bedroom
1 bathroom

Interior Size
757-860 Sq Ft / 70-80 Sq M

Lanai Size
93 Sq Ft / 9 Sq M



Mountain

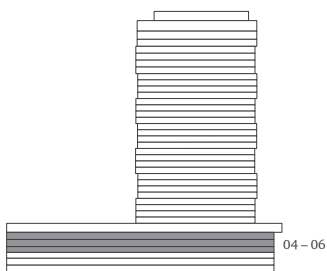
Sunset

Diamond Head

Ocean

Howard Hughes.

www.wardvillage.com



Scale: Not to scale. All dimensions are approximate.

DISCLAIMER

Obtain the Property Report required by Federal law and read it before signing anything. No Federal agency has judged the merits or value, if any, of this property. Ward Village is a proposed planned master development in Honolulu, Hawai'i that does not yet exist. Photos and drawings and other visual depictions in this advertisement are for illustrative purposes only and do not represent the amenities or facilities in Ward Village and should not be relied upon in deciding to purchase or lease an interest in the development. The Developer makes no guarantee, representation or warranty whatsoever that the developments, facilities or improvements depicted will ultimately appear as shown. This is not intended to be an offering or solicitation of sale. Square footage figures for each residence shown herein are approximations and no representation is made as to the accuracy of such figures. Exclusive Project Broker Ward Village Properties LLC. Copyright © 2016.



WARD VILLAGE.

HONOLULU, HI

- ANAHA -
1108 AUAHI

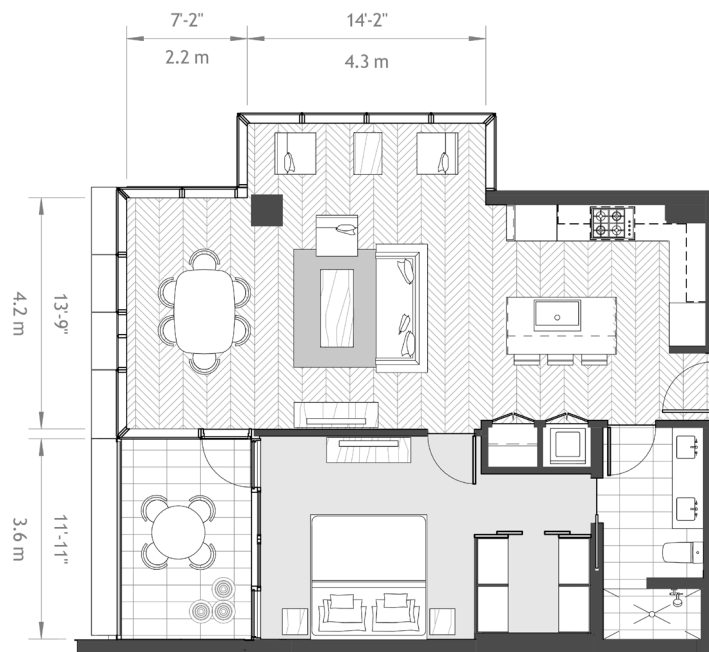
1 BEDROOM FLAT B

LEVELS	UNITS
4-6	P 1 BR-416, 516, 616

1 bedroom
1 bathroom

Interior Size
869-896 Sq Ft / 81-83 Sq M

Lanai Size
93 Sq Ft / 9 Sq M



Mountain

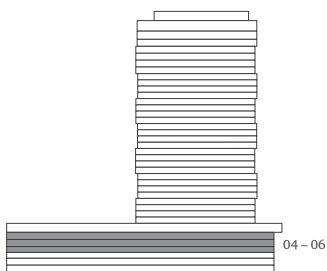
Sunset

Diamond Head

Ocean

Howard Hughes.

www.wardvillage.com



Scale: Not to scale. All dimensions are approximate.

DISCLAIMER

Obtain the Property Report required by Federal law and read it before signing anything. No Federal agency has judged the merits or value, if any, of this property. Ward Village is a proposed planned master development in Honolulu, Hawai'i that does not yet exist. Photos and drawings and other visual depictions in this advertisement are for illustrative purposes only and do not represent the amenities or facilities in Ward Village and should not be relied upon in deciding to purchase or lease an interest in the development. The Developer makes no guarantee, representation or warranty whatsoever that the developments, facilities or improvements depicted will ultimately appear as shown. This is not intended to be an offering or solicitation of sale. Square footage figures for each residence shown herein are approximations and no representation is made as to the accuracy of such figures. Exclusive Project Broker Ward Village Properties LLC. Copyright © 2016.



WARD VILLAGE.

HONOLULU, HI

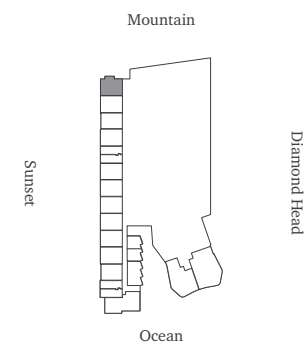
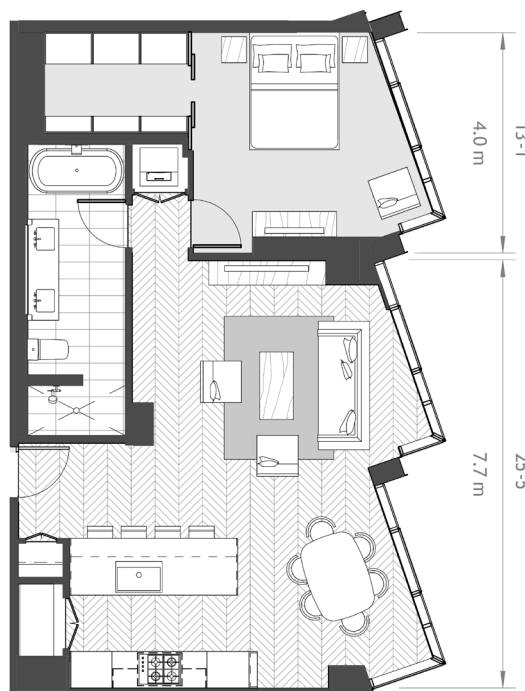
- ANAHA -
1108 AUAHI

1 BEDROOM FLAT C

LEVELS	UNITS
2-5	P 1 BR-200, 300, 400, 500

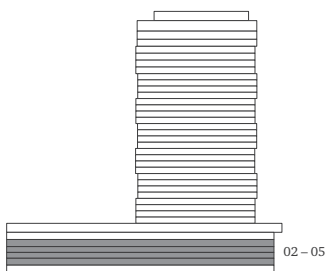
1 bedroom
1 bathroom

Interior Size
889-890 Sq Ft / 83 Sq M



Howard Hughes.

www.wardvillage.com



Scale: Not to scale. All dimensions are approximate.

DISCLAIMER

Obtain the Property Report required by Federal law and read it before signing anything. No Federal agency has judged the merits or value, if any, of this property. Ward Village is a proposed planned master development in Honolulu, Hawai'i that does not yet exist. Photos and drawings and other visual depictions in this advertisement are for illustrative purposes only and do not represent the amenities or facilities in Ward Village and should not be relied upon in deciding to purchase or lease an interest in the development. The Developer makes no guarantee, representation or warranty whatsoever that the developments, facilities or improvements depicted will ultimately appear as shown. This is not intended to be an offering or solicitation of sale. Square footage figures for each residence shown herein are approximations and no representation is made as to the accuracy of such figures. Exclusive Project Broker Ward Village Properties LLC. Copyright © 2016.



WARD VILLAGE®

HONOLULU, HI

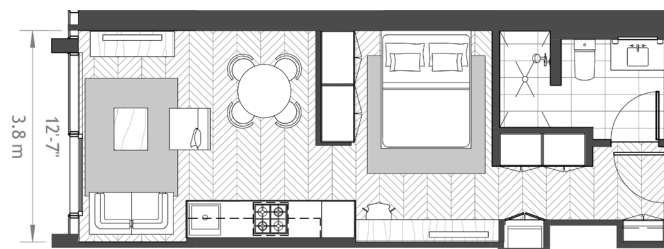
- A N A H A -
1108 AUAHI

STUDIO FLAT A

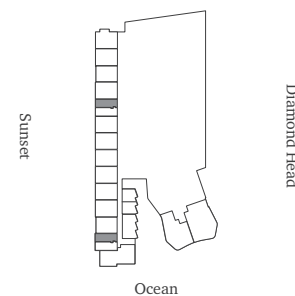
LEVELS	UNITS
2-6	P Studio 203, 212, 303, 312, 403, 412, 503, 512, 603, 612

Studio
1 bathroom

Interior Size
435-441 Sq Ft / 40-41 Sq M



Mountain



Ocean

Howard Hughes®

www.wardvillage.com

02 - 06

Scale: Not to scale. All dimensions are approximate.

DISCLAIMER

Obtain the Property Report required by Federal law and read it before signing anything. No Federal agency has judged the merits or value, if any, of this property. Ward Village is a proposed planned master development in Honolulu, Hawai'i that does not yet exist. Photos and drawings and other visual depictions in this advertisement are for illustrative purposes only and do not represent the amenities or facilities in Ward Village and should not be relied upon in deciding to purchase or lease an interest in the development. The Developer makes no guarantee, representation or warranty whatsoever that the developments, facilities or improvements depicted will ultimately appear as shown. This is not intended to be an offering or solicitation of sale. Square footage figures for each residence shown herein are approximations and no representation is made as to the accuracy of such figures. Exclusive Project Broker Ward Village Properties LLC. Copyright © 2016.



WARD VILLAGE.

HONOLULU, HI

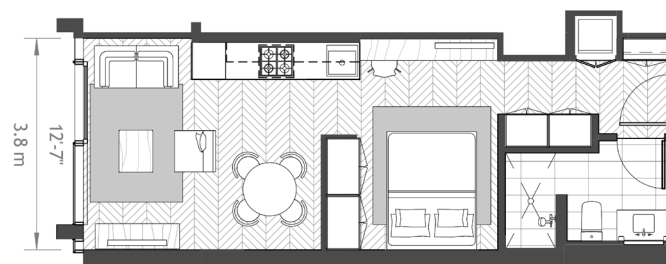
- ANAHA -
1108 AUAHI

STUDIO FLAT B

LEVELS	UNITS
2-6	P Studio 201, 211, 302, 311, 402, 411, 502, 511, 602, 611

Studio
1 bathroom

Interior Size
435-441 Sq Ft / 40-41 Sq M



Mountain

Sunset

Diamond Head

Ocean

Howard Hughes.

www.wardvillage.com

02 - 06

Scale: Not to scale. All dimensions are approximate.

DISCLAIMER

Obtain the Property Report required by Federal law and read it before signing anything. No Federal agency has judged the merits or value, if any, of this property. Ward Village is a proposed planned master development in Honolulu, Hawai'i that does not yet exist. Photos and drawings and other visual depictions in this advertisement are for illustrative purposes only and do not represent the amenities or facilities in Ward Village and should not be relied upon in deciding to purchase or lease an interest in the development. The Developer makes no guarantee, representation or warranty whatsoever that the developments, facilities or improvements depicted will ultimately appear as shown. This is not intended to be an offering or solicitation of sale. Square footage figures for each residence shown herein are approximations and no representation is made as to the accuracy of such figures. Exclusive Project Broker Ward Village Properties LLC. Copyright © 2016.



WARD VILLAGE.

HONOLULU, HI

- A N A H A -

1108 AUAHI

2 BEDROOM FLAT A

LEVELS	UNITS
3-6	P 2 BR-301, 401, 501, 601

2 bedroom
2 bathroom

Interior Size
1,465-1,468 Sq Ft / 136 Sq M
Lanai Size
90 Sq Ft / 8 Sq M



Mountain

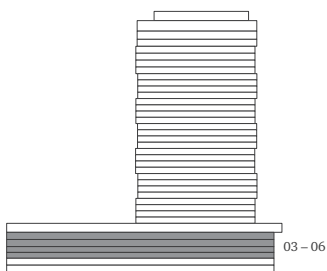
Sunset

Diamond Head

Ocean

Howard Hughes.

www.wardvillage.com



Scale: Not to scale. All dimensions are approximate.

DISCLAIMER

Obtain the Property Report required by Federal law and read it before signing anything. No Federal agency has judged the merits or value, if any, of this property. Ward Village is a proposed planned master development in Honolulu, Hawai'i that does not yet exist. Photos and drawings and other visual depictions in this advertisement are for illustrative purposes only and do not represent the amenities or facilities in Ward Village and should not be relied upon in deciding to purchase or lease an interest in the development. The Developer makes no guarantee, representation or warranty whatsoever that the developments, facilities or improvements depicted will ultimately appear as shown. This is not intended to be an offering or solicitation of sale. Square footage figures for each residence shown herein are approximations and no representation is made as to the accuracy of such figures. Exclusive Project Broker Ward Village Properties LLC. Copyright © 2016.



WARD VILLAGE.

HONOLULU, HI

- ANAHA -
1108 AUAHI

TOWNHOME A

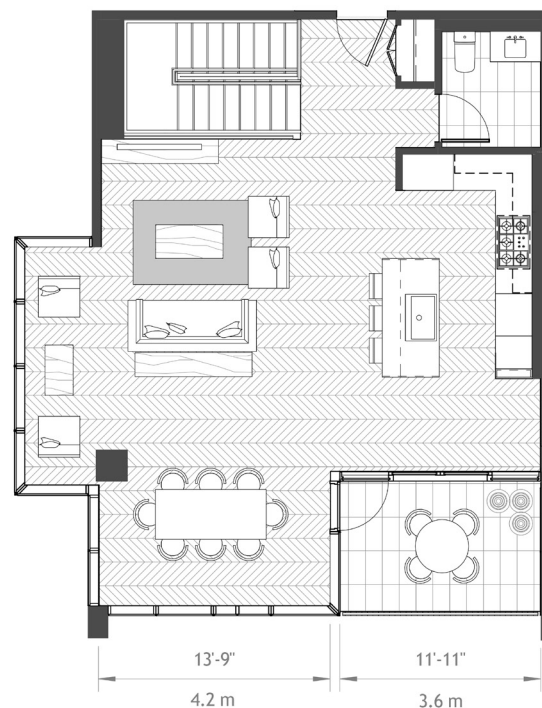
LEVELS	UNITS
2-3	PTH-316

2 bedroom
2.5 bathroom

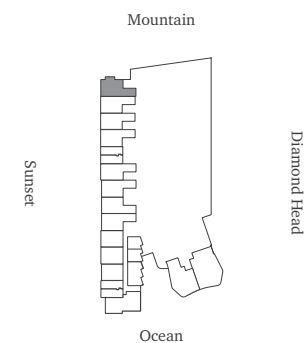
Interior Size
1,806 Sq Ft / 168 Sq M
Lanai Size
93 Sq Ft / 9 Sq M



Floor 2



Floor 3



Howard Hughes.

www.wardvillage.com

02 - 03

Scale: Not to scale. All dimensions are approximate.

DISCLAIMER

Obtain the Property Report required by Federal law and read it before signing anything. No Federal agency has judged the merits or value, if any, of this property. Ward Village is a proposed planned master development in Honolulu, Hawai'i that does not yet exist. Photos and drawings and other visual depictions in this advertisement are for illustrative purposes only and do not represent the amenities or facilities in Ward Village and should not be relied upon in deciding to purchase or lease an interest in the development. The Developer makes no guarantee, representation or warranty whatsoever that the developments, facilities or improvements depicted will ultimately appear as shown. This is not intended to be an offering or solicitation of sale. Square footage figures for each residence shown herein are approximations and no representation is made as to the accuracy of such figures. Exclusive Project Broker Ward Village Properties LLC. Copyright © 2016.



WARD VILLAGE.

HONOLULU, HI

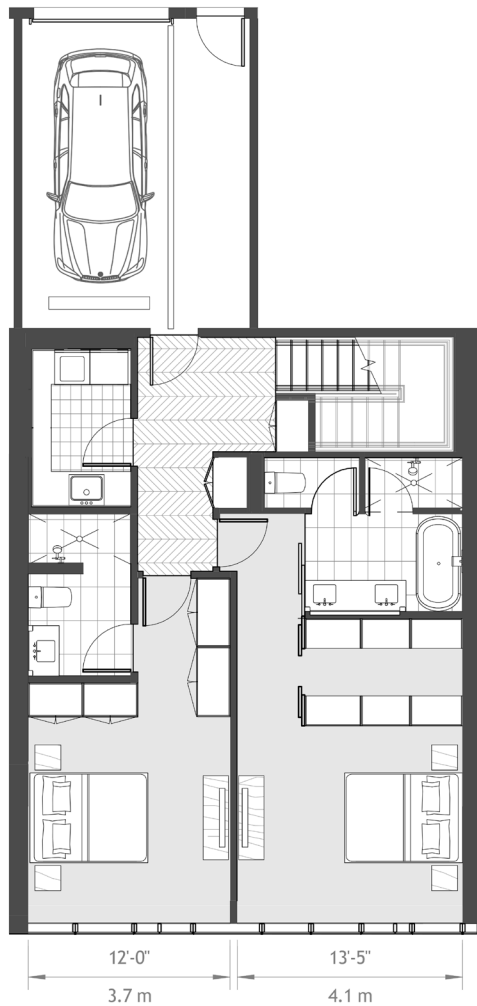
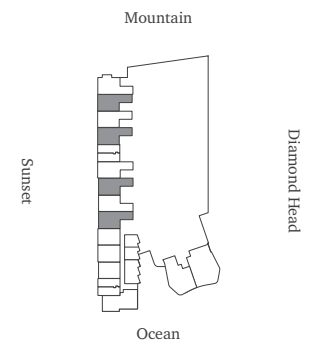
- ANAHA -
1108 AUAHI

TOWNHOME B

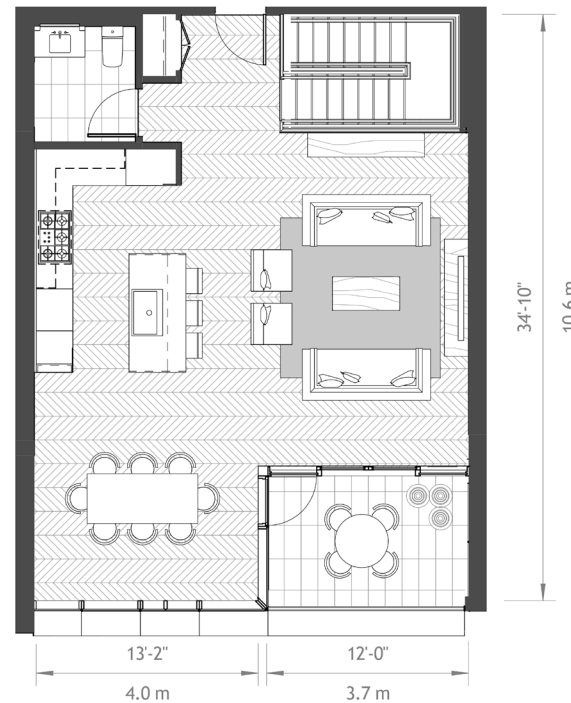
LEVELS	UNITS
2-3	PTH-307, 309, 313, 315

2 bedroom
2.5 bathroom

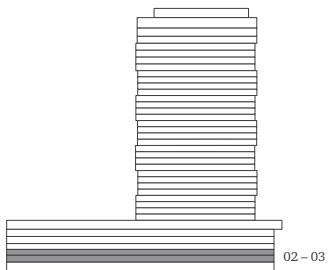
Interior Size
1,618-1,665 Sq Ft / 150-155 Sq M
Lanai Size
93 Sq Ft / 9 Sq M



Floor 2



Floor 3



02-03

Scale: Not to scale. All dimensions are approximate.

DISCLAIMER

Obtain the Property Report required by Federal law and read it before signing anything. No Federal agency has judged the merits or value, if any, of this property. Ward Village is a proposed planned master development in Honolulu, Hawai'i that does not yet exist. Photos and drawings and other visual depictions in this advertisement are for illustrative purposes only and do not represent the amenities or facilities in Ward Village and should not be relied upon in deciding to purchase or lease an interest in the development. The Developer makes no guarantee, representation or warranty whatsoever that the developments, facilities or improvements depicted will ultimately appear as shown. This is not intended to be an offering or solicitation of sale. Square footage figures for each residence shown herein are approximations and no representation is made as to the accuracy of such figures. Exclusive Project Broker Ward Village Properties LLC. Copyright © 2016.

Howard Hughes.

www.wardvillage.com



WARD VILLAGE.

HONOLULU, HI

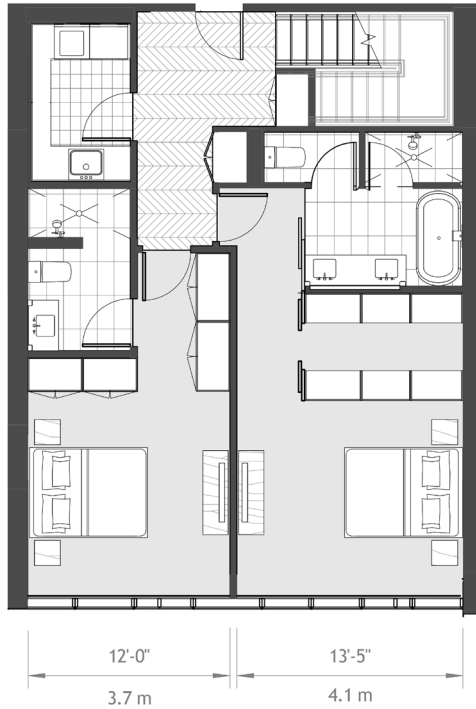
- ANAHA -
1108 AUAHI

TOWNHOME C

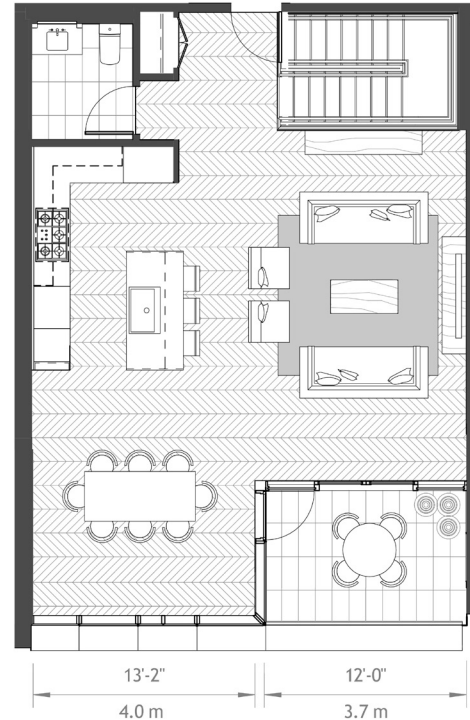
LEVELS	UNITS
2-3	PTH-304, 305, 306

2 bedroom
2.5 bathroom

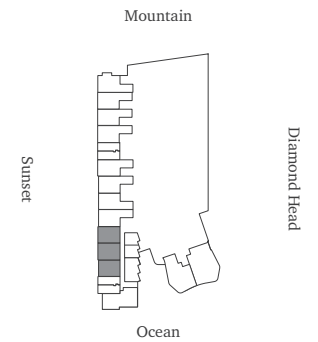
Interior Size
1,592-1,694 Sq Ft / 148-157 Sq M
Lanai Size
93 Sq Ft / 9 Sq M



Floor 2

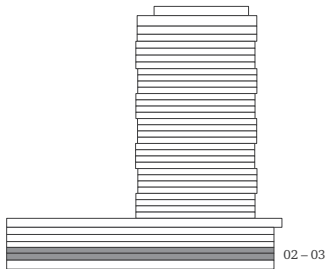


Floor 3



Howard Hughes.

www.wardvillage.com



02-03

Scale: Not to scale. All dimensions are approximate.

DISCLAIMER

Obtain the Property Report required by Federal law and read it before signing anything. No Federal agency has judged the merits or value, if any, of this property. Ward Village is a proposed planned master development in Honolulu, Hawai'i that does not yet exist. Photos and drawings and other visual depictions in this advertisement are for illustrative purposes only and do not represent the amenities or facilities in Ward Village and should not be relied upon in deciding to purchase or lease an interest in the development. The Developer makes no guarantee, representation or warranty whatsoever that the developments, facilities or improvements depicted will ultimately appear as shown. This is not intended to be an offering or solicitation of sale. Square footage figures for each residence shown herein are approximations and no representation is made as to the accuracy of such figures. Exclusive Project Broker Ward Village Properties LLC. Copyright © 2016.



WARD VILLAGE.

HONOLULU, HI

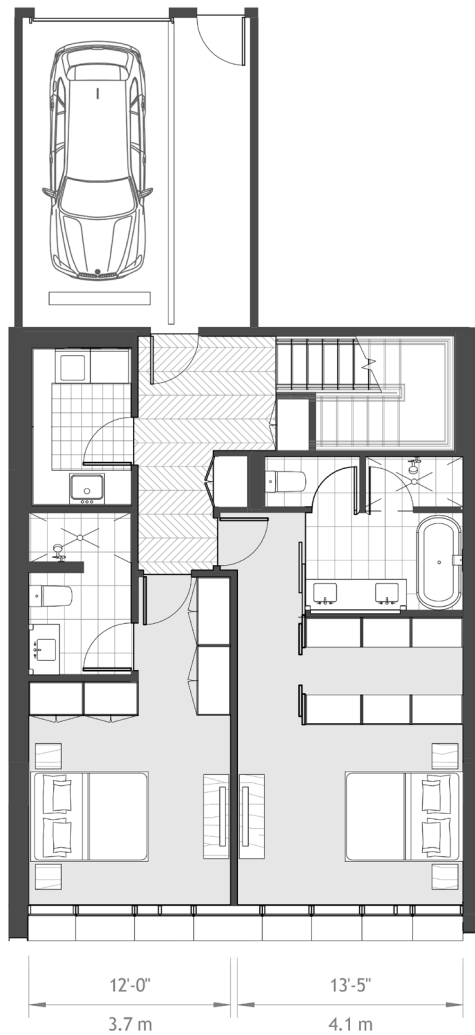
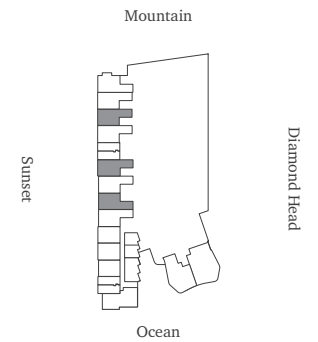
- ANAHA -
1108 AUAHI

TOWNHOME D

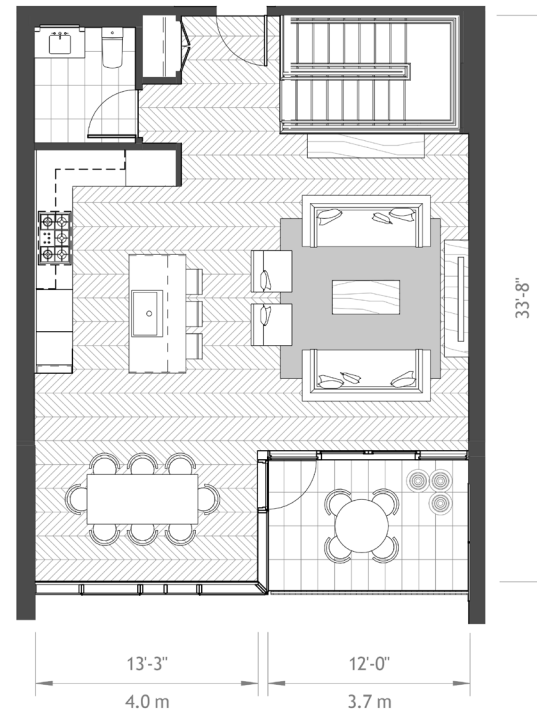
LEVELS	UNITS
2-3	PTH-308, 310, 314

2 bedroom
2.5 bathroom

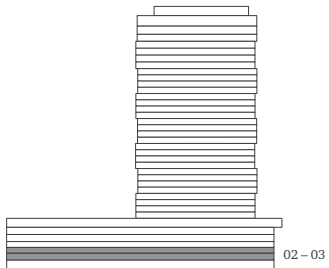
Interior Size
1,548-1,643 Sq Ft / 144-153 Sq M
Lanai Size
93 Sq Ft / 9 Sq M



Floor 2



Floor 3



02-03

Scale: Not to scale. All dimensions are approximate.

DISCLAIMER

Obtain the Property Report required by Federal law and read it before signing anything. No Federal agency has judged the merits or value, if any, of this property. Ward Village is a proposed planned master development in Honolulu, Hawai'i that does not yet exist. Photos and drawings and other visual depictions in this advertisement are for illustrative purposes only and do not represent the amenities or facilities in Ward Village and should not be relied upon in deciding to purchase or lease an interest in the development. The Developer makes no guarantee, representation or warranty whatsoever that the developments, facilities or improvements depicted will ultimately appear as shown. This is not intended to be an offering or solicitation of sale. Square footage figures for each residence shown herein are approximations and no representation is made as to the accuracy of such figures. Exclusive Project Broker Ward Village Properties LLC. Copyright © 2016.

Howard Hughes.

www.wardvillage.com



WARD VILLAGE.

HONOLULU, HI

- ANAHA -
1108 AUAHI

2 BEDROOM FLAT B

LEVEL	UNITS
2	P 2 BR-201

2 bedroom
2 bathroom

Interior Size
1,568 Sq Ft / 146 Sq M



Mountain

Sunset

Diamond Head

Ocean

Howard Hughes.

www.wardvillage.com

02

Scale: Not to scale. All dimensions are approximate.

DISCLAIMER

Obtain the Property Report required by Federal law and read it before signing anything. No Federal agency has judged the merits or value, if any, of this property. Ward Village is a proposed planned master development in Honolulu, Hawai'i that does not yet exist. Photos and drawings and other visual depictions in this advertisement are for illustrative purposes only and do not represent the amenities or facilities in Ward Village and should not be relied upon in deciding to purchase or lease an interest in the development. The Developer makes no guarantee, representation or warranty whatsoever that the developments, facilities or improvements depicted will ultimately appear as shown. This is not intended to be an offering or solicitation of sale. Square footage figures for each residence shown herein are approximations and no representation is made as to the accuracy of such figures. Exclusive Project Broker Ward Village Properties LLC. Copyright © 2016.



WARD VILLAGE.

HONOLULU, HI

- A N A H A -
1108 AUAHI

PENTHOUSE A

LEVELS

36-37

4 bedroom
4.5 bathroom
Sitting room

Interior Size
3,567 Sq Ft / 331 Sq M

Mountain

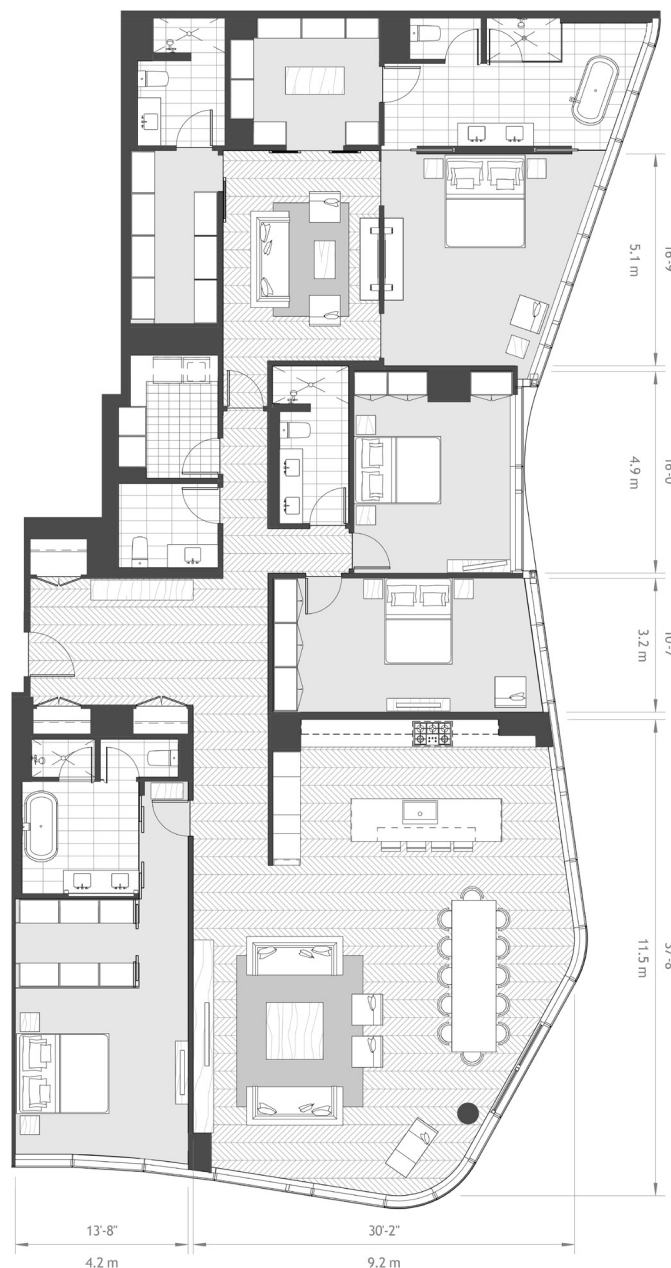
Sunset

Diamond Head

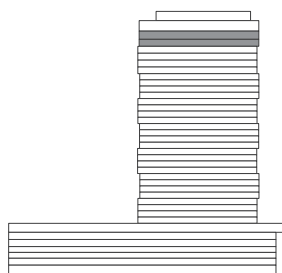
Ocean

Howard Hughes.

www.wardvillage.com



36-37



Scale: Not to scale. All dimensions are approximate.

DISCLAIMER

Obtain the Property Report required by Federal law and read it before signing anything. No Federal agency has judged the merits or value, if any, of this property. Ward Village is a proposed planned master development in Honolulu, Hawai'i that does not yet exist. Photos and drawings and other visual depictions in this advertisement are for illustrative purposes only and do not represent the amenities or facilities in Ward Village and should not be relied upon in deciding to purchase or lease an interest in the development. The Developer makes no guarantee, representation or warranty whatsoever that the developments, facilities or improvements depicted will ultimately appear as shown. This is not intended to be an offering or solicitation of sale. Square footage figures for each residence shown herein are approximations and no representation is made as to the accuracy of such figures. Exclusive Project Broker Ward Village Properties LLC. Copyright © 2016.



WARD VILLAGE.

HONOLULU, HI

- ANAHA -
1108 AUAHI

PENTHOUSE B

LEVELS

36-37

3 bedroom
3 bathroom

Interior Size

2,492 Sq Ft / 232 Sq M

Mountain

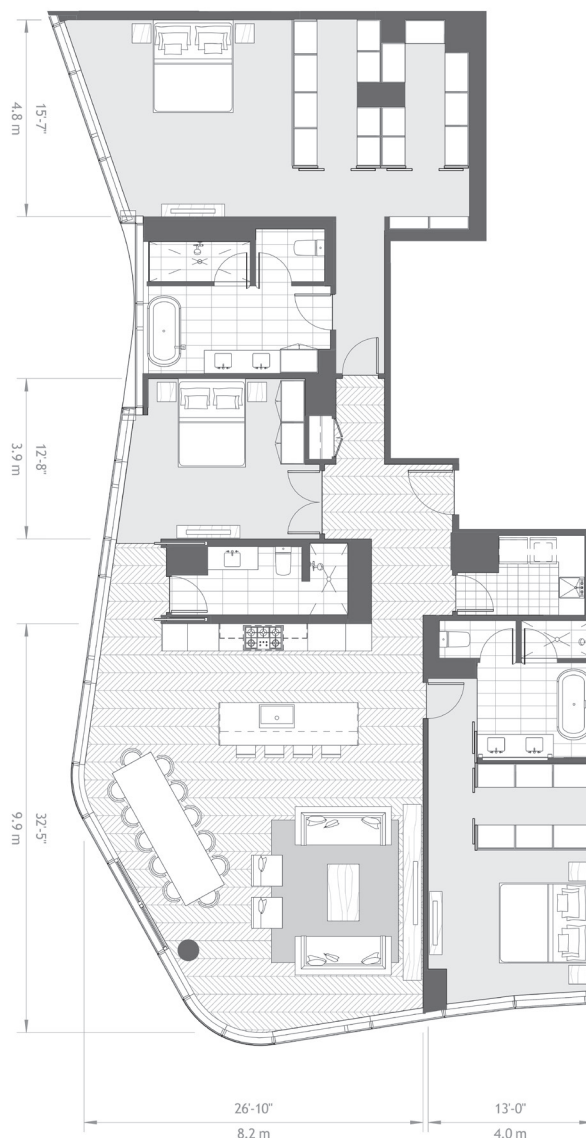
Sunset

Diamond Head

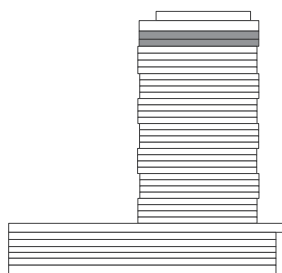
Ocean

Howard Hughes.

www.wardvillage.com



36-37



Scale: Not to scale. All dimensions are approximate.

DISCLAIMER

Obtain the Property Report required by Federal law and read it before signing anything. No Federal agency has judged the merits or value, if any, of this property. Ward Village is a proposed planned master development in Honolulu, Hawai'i that does not yet exist. Photos and drawings and other visual depictions in this advertisement are for illustrative purposes only and do not represent the amenities or facilities in Ward Village and should not be relied upon in deciding to purchase or lease an interest in the development. The Developer makes no guarantee, representation or warranty whatsoever that the developments, facilities or improvements depicted will ultimately appear as shown. This is not intended to be an offering or solicitation of sale. Square footage figures for each residence shown herein are approximations and no representation is made as to the accuracy of such figures. Exclusive Project Broker Ward Village Properties LLC. Copyright © 2016.



WARD VILLAGE.

HONOLULU, HI

- ANAHA -
1108 AUAHI

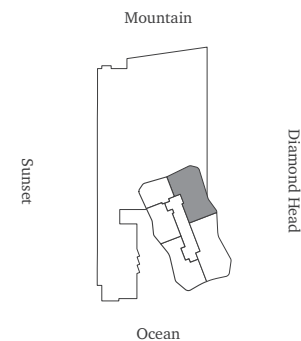
PENTHOUSE C

LEVELS

36-37

4 bedroom
4.5 bathroom

Interior Size
2,906 Sq Ft / 270 Sq M



Sunset

Mountain

Diamond Head

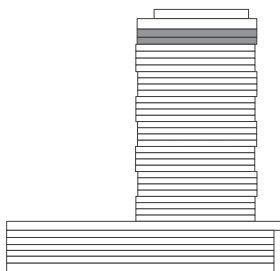
Ocean

Howard Hughes.

www.wardvillage.com



36-37



Scale: Not to scale. All dimensions are approximate.

DISCLAIMER

Obtain the Property Report required by Federal law and read it before signing anything. No Federal agency has judged the merits or value, if any, of this property. Ward Village is a proposed planned master development in Honolulu, Hawai'i that does not yet exist. Photos and drawings and other visual depictions in this advertisement are for illustrative purposes only and do not represent the amenities or facilities in Ward Village and should not be relied upon in deciding to purchase or lease an interest in the development. The Developer makes no guarantee, representation or warranty whatsoever that the developments, facilities or improvements depicted will ultimately appear as shown. This is not intended to be an offering or solicitation of sale. Square footage figures for each residence shown herein are approximations and no representation is made as to the accuracy of such figures. Exclusive Project Broker Ward Village Properties LLC. Copyright © 2016.



WARD VILLAGE.

HONOLULU, HI

- ANA HA -
1108 AUAHI

PENTHOUSE D

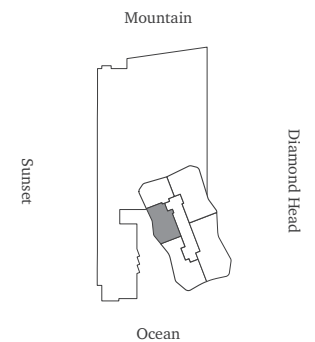
LEVELS

36-37

2 bedroom
2.5 bathroom

Interior Size

1,738 Sq Ft / 162 Sq M



Sunset

Mountain

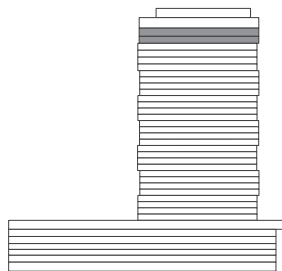
Diamond Head

Ocean

Howard Hughes.

www.wardvillage.com

36-37



Scale: Not to scale. All dimensions are approximate.

DISCLAIMER

Obtain the Property Report required by Federal law and read it before signing anything. No Federal agency has judged the merits or value, if any, of this property. Ward Village is a proposed planned master development in Honolulu, Hawai'i that does not yet exist. Photos and drawings and other visual depictions in this advertisement are for illustrative purposes only and do not represent the amenities or facilities in Ward Village and should not be relied upon in deciding to purchase or lease an interest in the development. The Developer makes no guarantee, representation or warranty whatsoever that the developments, facilities or improvements depicted will ultimately appear as shown. This is not intended to be an offering or solicitation of sale. Square footage figures for each residence shown herein are approximations and no representation is made as to the accuracy of such figures. Exclusive Project Broker Ward Village Properties LLC. Copyright © 2016.



WARD VILLAGE.

HONOLULU, HI

- ANA HA -
1108 AUAHI

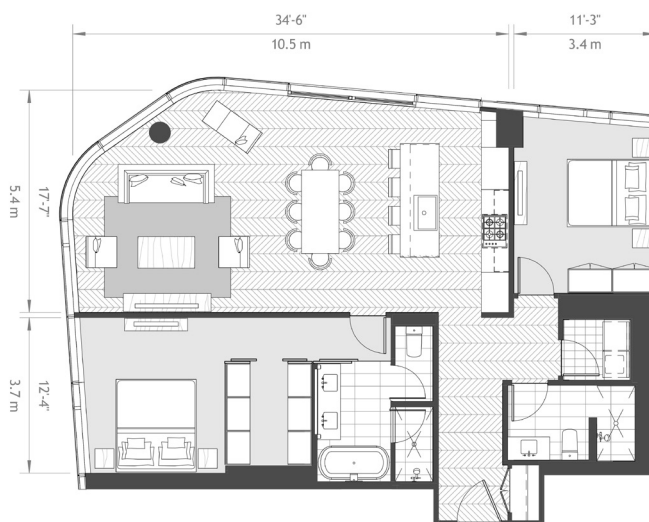
PENTHOUSE E

LEVELS

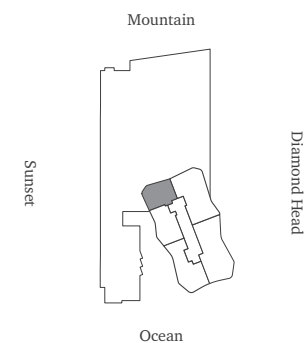
36-37

2 bedroom
2 bathroom

Interior Size
1,354 Sq Ft / 126 Sq M



36-37



Howard Hughes.

www.wardvillage.com

Scale: Not to scale. All dimensions are approximate.

DISCLAIMER

Obtain the Property Report required by Federal law and read it before signing anything. No Federal agency has judged the merits or value, if any, of this property. Ward Village is a proposed planned master development in Honolulu, Hawai'i that does not yet exist. Photos and drawings and other visual depictions in this advertisement are for illustrative purposes only and do not represent the amenities or facilities in Ward Village and should not be relied upon in deciding to purchase or lease an interest in the development. The Developer makes no guarantee, representation or warranty whatsoever that the developments, facilities or improvements depicted will ultimately appear as shown. This is not intended to be an offering or solicitation of sale. Square footage figures for each residence shown herein are approximations and no representation is made as to the accuracy of such figures. Exclusive Project Broker Ward Village Properties LLC. Copyright © 2016.



WARD VILLAGE.

HONOLULU, HI

- ANAHA -
1108 AUAHI

GRAND PENTHOUSE A

LEVELS

38 & Rooftop

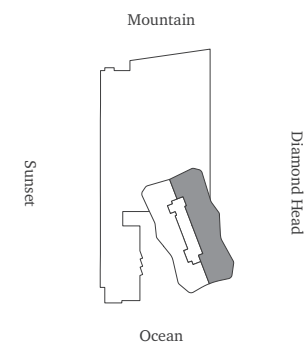
5 bedroom
6.5 bathroom
Den

Sitting room
Study
Rooftop terrace

Interior Size
6,737 Sq Ft / 629 Sq M
Lanai Size
1,110 Sq Ft / 103 Sq M



38 & Rooftop



Howard Hughes.

www.wardvillage.com

Scale: Not to scale. All dimensions are approximate.

DISCLAIMER

Obtain the Property Report required by Federal law and read it before signing anything. No Federal agency has judged the merits or value, if any, of this property. Ward Village is a proposed planned master development in Honolulu, Hawai'i that does not yet exist. Photos and drawings and other visual depictions in this advertisement are for illustrative purposes only and do not represent the amenities or facilities in Ward Village and should not be relied upon in deciding to purchase or lease an interest in the development. The Developer makes no guarantee, representation or warranty whatsoever that the developments, facilities or improvements depicted will ultimately appear as shown. This is not intended to be an offering or solicitation of sale. Square footage figures for each residence shown herein are approximations and no representation is made as to the accuracy of such figures. Exclusive Project Broker Ward Village Properties LLC. Copyright © 2016.



WARD VILLAGE.

HONOLULU, HI

- ANAHA -
1108 AUAHI

GRAND PENTHOUSE B

LEVELS

38 & Rooftop

5 bedroom
6.5 bathroom
Den

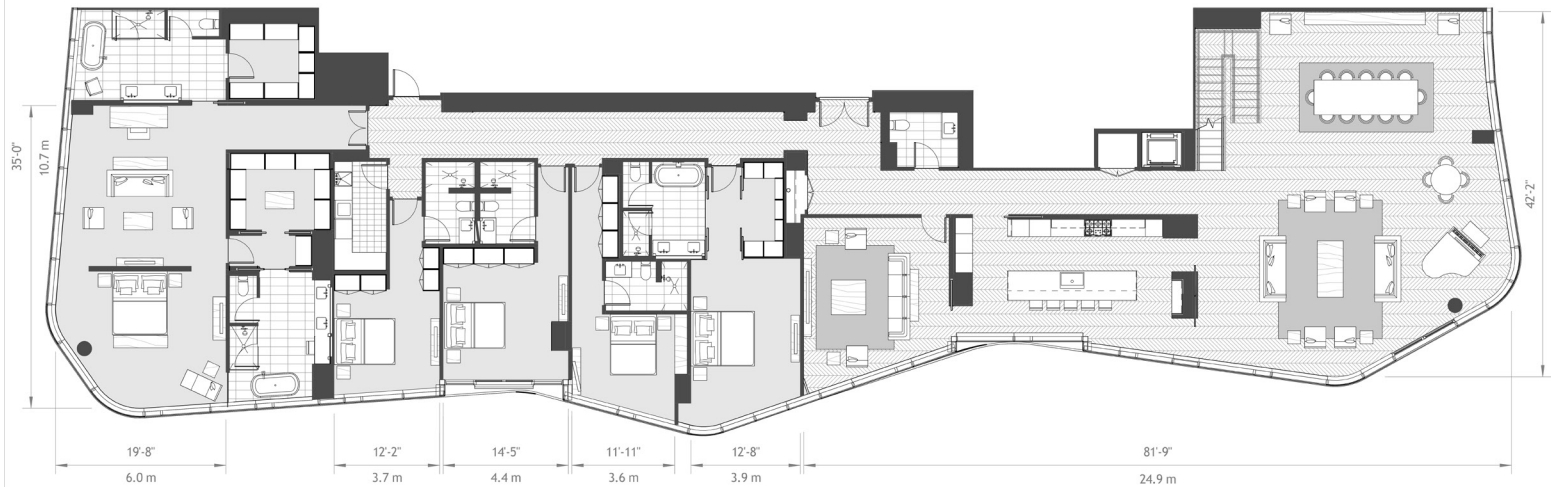
Sitting room
Rooftop terrace

Interior Size

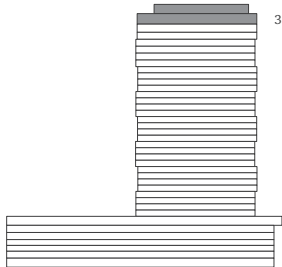
5,819 Sq Ft / 541 Sq M

Lanai Size

915 Sq Ft / 85 Sq M



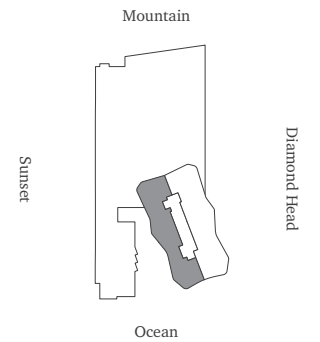
38 & Rooftop



Scale: Not to scale. All dimensions are approximate.

DISCLAIMER

Obtain the Property Report required by Federal law and read it before signing anything. No Federal agency has judged the merits or value, if any, of this property. Ward Village is a proposed planned master development in Honolulu, Hawai'i that does not yet exist. Photos and drawings and other visual depictions in this advertisement are for illustrative purposes only and do not represent the amenities or facilities in Ward Village and should not be relied upon in deciding to purchase or lease an interest in the development. The Developer makes no guarantee, representation or warranty whatsoever that the developments, facilities or improvements depicted will ultimately appear as shown. This is not intended to be an offering or solicitation of sale. Square footage figures for each residence shown herein are approximations and no representation is made as to the accuracy of such figures. Exclusive Project Broker Ward Village Properties LLC. Copyright © 2016.



Sunset

Mountain

Diamond Head

Ocean

Howard Hughes.

www.wardvillage.com