



-WAIEA-

1118 ALA MOANA

TOWER RESIDENCES

RESIDENCE D

2 bedroom,
2 bathroom

Interior:
1,468 Sq Ft / 136 Sq M

Private foyer:
68 Sq Ft / 6 Sq M

Lanai:
167 Sq Ft / 16 Sq M

RESIDENCE C

1 bedroom,
2 bathroom

Interior:
1,138 Sq Ft / 106 Sq M

Lanai:
74 Sq Ft / 7 Sq M

RESIDENCE B

3 bedroom,
3.5 bathroom

Interior:
2,403 Sq Ft / 223 Sq M

Private foyer:
214 Sq Ft / 20 Sq M

Lanai:
357 Sq Ft / 33 Sq M

RESIDENCE E

3 bedroom,
2.5 bathroom

Interior:
1,991 – 2,045 Sq Ft /
185 – 190 Sq M

Private foyer:
140 Sq Ft / 13 Sq M

Lanai:
63 – 123 Sq Ft /
6 – 11 Sq M

RESIDENCE F

2 bedroom,
2.5 bathroom

Interior:
1,869 – 2,069 Sq Ft /
174 – 192 Sq M

RESIDENCE A

3 bedroom,
3.5 bathroom

Interior:
2,686 – 3,071 Sq Ft /
250 – 285 Sq M

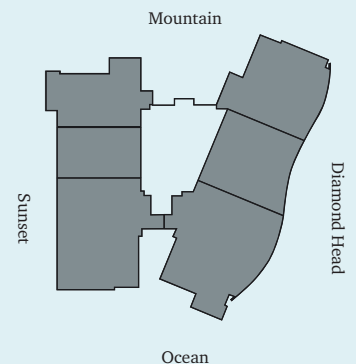
Private foyer:
214 Sq Ft / 20 Sq M

Lanai:
142 Sq Ft / 13 Sq M



WARNING: THE CALIFORNIA DEPARTMENT OF REAL ESTATE HAS NOT INSPECTED, EXAMINED OR QUALIFIED THIS OFFERING.

This is not intended to be an offer to sell nor a solicitation of offers to buy real estate in Ward Village development to residents of Connecticut, Idaho, Illinois, New York, Oregon or South Carolina, or to residents of any other jurisdiction where prohibited by law. No offering can be made to residents of New York until an offering plan is filed with the Department of Law of the State of New York. Ward Village is a proposed planned master development in Honolulu, Hawaii that does not yet exist. Exclusive Project Broker Ward Village Properties, LLC. Copyright 2016. Equal Housing Opportunity.





-WAIEA-

1118 ALA MOANA

PENTHOUSES

PENTHOUSE C

2 bedroom,
2.5 bathroom

Interior:
2,085 Sq Ft / 194 Sq M

Private foyer:
62 Sq Ft / 6 Sq M

Lanai:
173 Sq Ft / 16 Sq M

PENTHOUSE B

3 bedroom,
3.5 bathroom

Interior:
3,058 Sq Ft / 284 Sq M

Private foyer:
211 Sq Ft / 20 Sq M

Lanai:
357 Sq Ft / 33 Sq M

PENTHOUSE D

3 bedroom,
3.5 bathroom

Interior:
2,622 – 2,645 Sq Ft /
244 – 246 Sq M

Private foyer:
127 Sq Ft / 12 Sq M

Lanai:
79 Sq Ft / 7 Sq M

PENTHOUSE A

4 bedroom,
4.5 bathroom

Interior:
4,140 – 4,154 Sq Ft /
385 – 386 Sq M

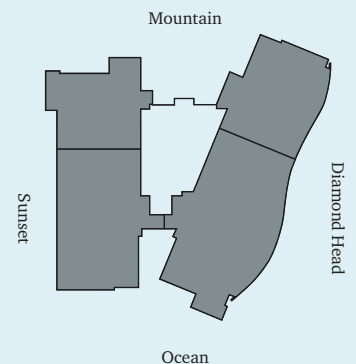
Private foyer:
207 Sq Ft / 19 Sq M

Lanai:
142 Sq Ft / 13 Sq M



WARNING: THE CALIFORNIA DEPARTMENT OF REAL ESTATE HAS NOT INSPECTED, EXAMINED OR QUALIFIED THIS OFFERING.

This is not intended to be an offer to sell nor a solicitation of offers to buy real estate in Ward Village development to residents of Connecticut, Idaho, Illinois, New York, Oregon or South Carolina, or to residents of any other jurisdiction where prohibited by law. No offering can be made to residents of New York until an offering plan is filed with the Department of Law of the State of New York. Ward Village is a proposed planned master development in Honolulu, Hawaii that does not yet exist. Exclusive Project Broker Ward Village Properties, LLC. Copyright 2016. Equal Housing Opportunity.





WARD VILLAGE.

HONOLULU, HI

- WAIEA -
1118 ALA MOANA

RESIDENCE A

LEVELS

5-6, 8-31

3 bedroom
3.5 bathroom

Interior Size

2,686-3,071 Sq Ft / 250-285 Sq M

Lanai Size

214 Sq Ft / 20 Sq M

Lanai Size

142 Sq Ft / 13 Sq M

Mountain

Sunset

Diamond Head

Ocean

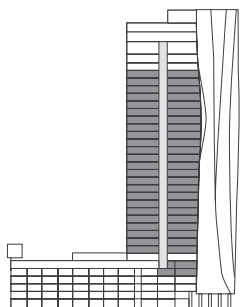
Howard Hughes.

www.wardvillage.com



8-31

5-6



Scale: Not to scale. All dimensions are approximate.

DISCLAIMER

Obtain the Property Report required by Federal law and read it before signing anything. No Federal agency has judged the merits or value, if any, of this property. Ward Village is a proposed planned master development in Honolulu, Hawai'i that does not yet exist. Photos and drawings and other visual depictions in this advertisement are for illustrative purposes only and do not represent the amenities or facilities in Ward Village and should not be relied upon in deciding to purchase or lease an interest in the development. The Developer makes no guarantee, representation or warranty whatsoever that the developments, facilities or improvements depicted will ultimately appear as shown. This is not intended to be an offering or solicitation of sale. Square footage figures for each residence shown herein are approximations and no representation is made as to the accuracy of such figures. Exclusive Project Broker Ward Village Properties LLC. Copyright © 2016.



WARD VILLAGE.

HONOLULU, HI

- WAIEA -
1118 ALA MOANA

RESIDENCE A - 2 BED
OPTION WITH FAMILY ROOM

LEVELS

5-6, 8-31

2 bedroom
3.5 bathroom
Family room

Interior Size
2,686-3,071 Sq Ft / 250-285 Sq M

Lanai Size
214 Sq Ft / 20 Sq M

Lanai Size
142 Sq Ft / 13 Sq M

Mountain

Sunset

Diamond Head

Ocean

Howard Hughes.

www.wardvillage.com



8-31

5-6



Scale: Not to scale. All dimensions are approximate.

DISCLAIMER

Obtain the Property Report required by Federal law and read it before signing anything. No Federal agency has judged the merits or value, if any, of this property. Ward Village is a proposed planned master development in Honolulu, Hawai'i that does not yet exist. Photos and drawings and other visual depictions in this advertisement are for illustrative purposes only and do not represent the amenities or facilities in Ward Village and should not be relied upon in deciding to purchase or lease an interest in the development. The Developer makes no guarantee, representation or warranty whatsoever that the developments, facilities or improvements depicted will ultimately appear as shown. This is not intended to be an offering or solicitation of sale. Square footage figures for each residence shown herein are approximations and no representation is made as to the accuracy of such figures. Exclusive Project Broker Ward Village Properties LLC. Copyright © 2016.



WARD VILLAGE.

HONOLULU, HI

- WAIEA -
1118 ALA MOANA

RESIDENCE B

LEVELS

8-31

3 bedroom
3.5 bathroom

Interior Size

2,403 Sq Ft / 223 Sq M

Lanai Size

214 Sq Ft / 20 Sq M

Lanai Size

214 Sq Ft / 20 Sq M

Mountain

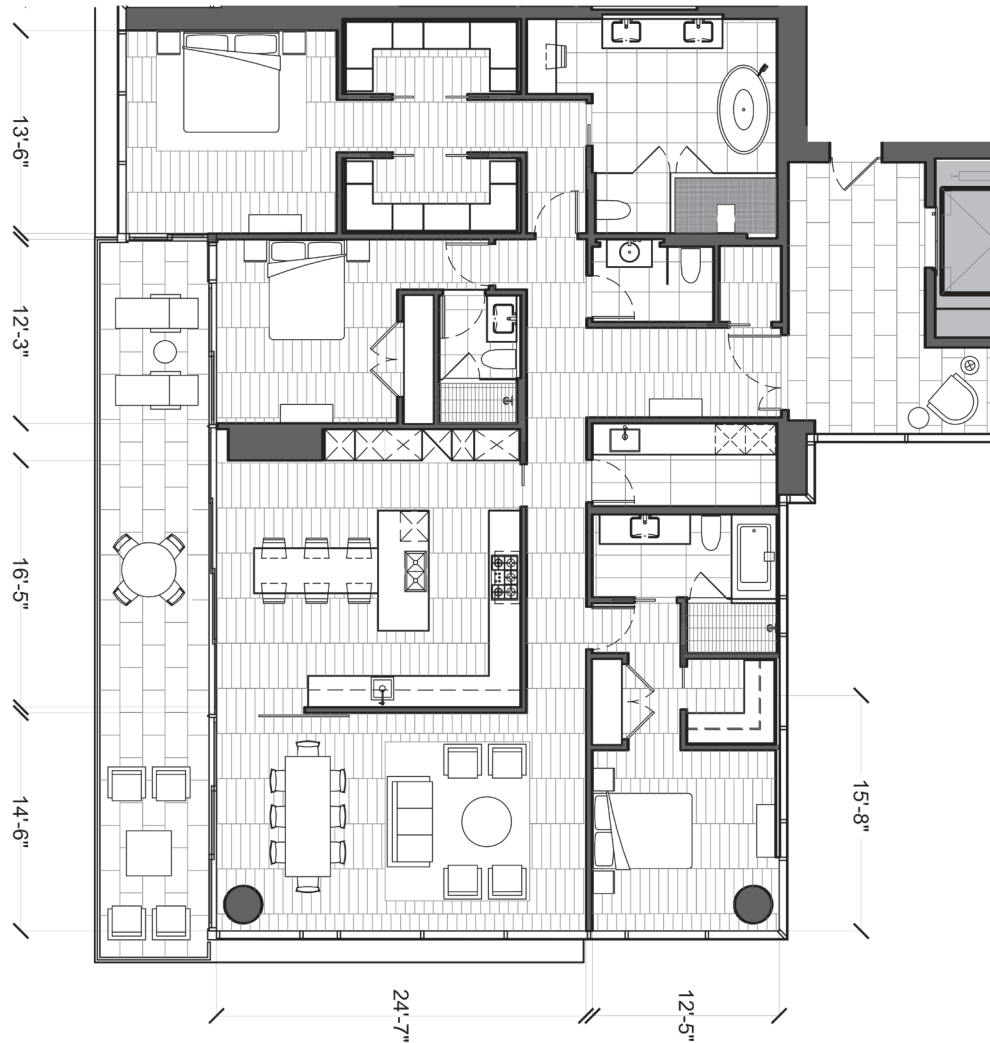
Sunset

Diamond Head

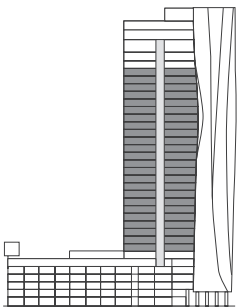
Ocean

Howard Hughes.

www.wardvillage.com



8-31



Scale: Not to scale. All dimensions are approximate.

DISCLAIMER

Obtain the Property Report required by Federal law and read it before signing anything. No Federal agency has judged the merits or value, if any, of this property. Ward Village is a proposed planned master development in Honolulu, Hawai'i that does not yet exist. Photos and drawings and other visual depictions in this advertisement are for illustrative purposes only and do not represent the amenities or facilities in Ward Village and should not be relied upon in deciding to purchase or lease an interest in the development. The Developer makes no guarantee, representation or warranty whatsoever that the developments, facilities or improvements depicted will ultimately appear as shown. This is not intended to be an offering or solicitation of sale. Square footage figures for each residence shown herein are approximations and no representation is made as to the accuracy of such figures. Exclusive Project Broker Ward Village Properties LLC. Copyright © 2016.



WARD VILLAGE.

HONOLULU, HI

- WAIEA -

1118 ALA MOANA

RESIDENCE B - 2 BED
OPTION WITH FAMILY ROOM

LEVELS

8-31

2 bedroom
3.5 bathroom
Family room

Interior Size
2,403 Sq Ft / 223 Sq M

Lanai Size
214 Sq Ft / 20 Sq M

Lanai Size
357 Sq Ft / 33 Sq M

Mountain

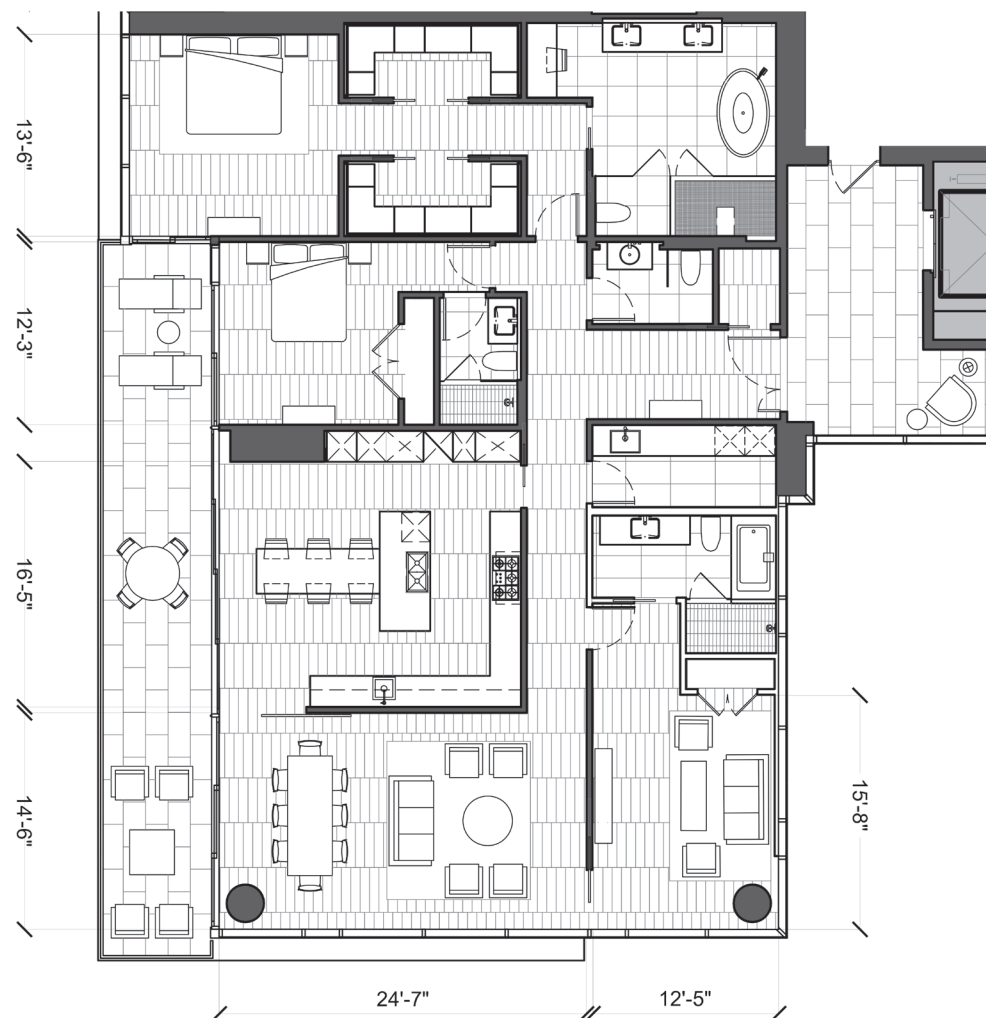
Sunset

Diamond Head

Ocean

Howard Hughes.

www.wardvillage.com



8-31



Scale: Not to scale. All dimensions are approximate.

DISCLAIMER

Obtain the Property Report required by Federal law and read it before signing anything. No Federal agency has judged the merits or value, if any, of this property. Ward Village is a proposed planned master development in Honolulu, Hawai'i that does not yet exist. Photos and drawings and other visual depictions in this advertisement are for illustrative purposes only and do not represent the amenities or facilities in Ward Village and should not be relied upon in deciding to purchase or lease an interest in the development. The Developer makes no guarantee, representation or warranty whatsoever that the developments, facilities or improvements depicted will ultimately appear as shown. This is not intended to be an offering or solicitation of sale. Square footage figures for each residence shown herein are approximations and no representation is made as to the accuracy of such figures. Exclusive Project Broker Ward Village Properties LLC. Copyright © 2016.



WARD VILLAGE®

HONOLULU, HI

- WAIEA -
1118 ALA MOANA

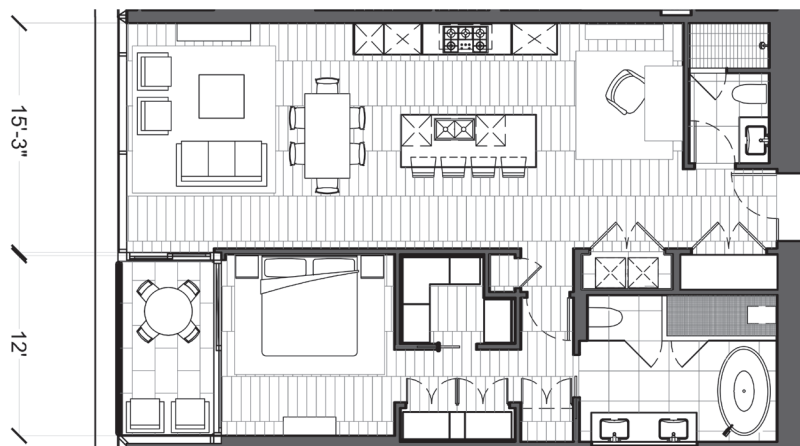
RESIDENCE C

LEVELS

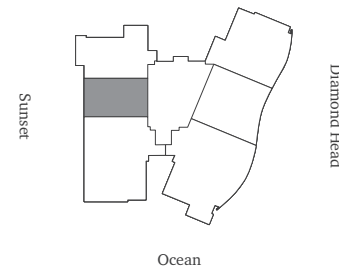
8-31

1 bedroom
2 bathroom

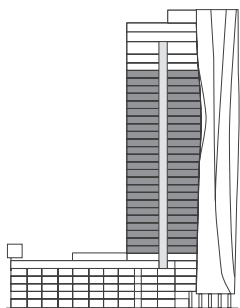
Interior Size
1,138 Sq Ft / 106 Sq M
Lanai Size
74 Sq Ft / 7 Sq M



Mountain



8-31



Scale: Not to scale. All dimensions are approximate.

DISCLAIMER

Obtain the Property Report required by Federal law and read it before signing anything. No Federal agency has judged the merits or value, if any, of this property. Ward Village is a proposed planned master development in Honolulu, Hawai'i that does not yet exist. Photos and drawings and other visual depictions in this advertisement are for illustrative purposes only and do not represent the amenities or facilities in Ward Village and should not be relied upon in deciding to purchase or lease an interest in the development. The Developer makes no guarantee, representation or warranty whatsoever that the developments, facilities or improvements depicted will ultimately appear as shown. This is not intended to be an offering or solicitation of sale. Square footage figures for each residence shown herein are approximations and no representation is made as to the accuracy of such figures. Exclusive Project Broker Ward Village Properties LLC. Copyright © 2016.

Howard Hughes®

www.wardvillage.com



WARD VILLAGE.

HONOLULU, HI

- WAIEA -
1118 ALA MOANA

RESIDENCE D

LEVELS

8-31

2 bedroom
2 bathroom

Interior Size
1,468 Sq Ft / 136 Sq M
Foyer Size
68 Sq Ft / 6 Sq M
Lanai Size
167 Sq Ft / 16 Sq M

Mountain

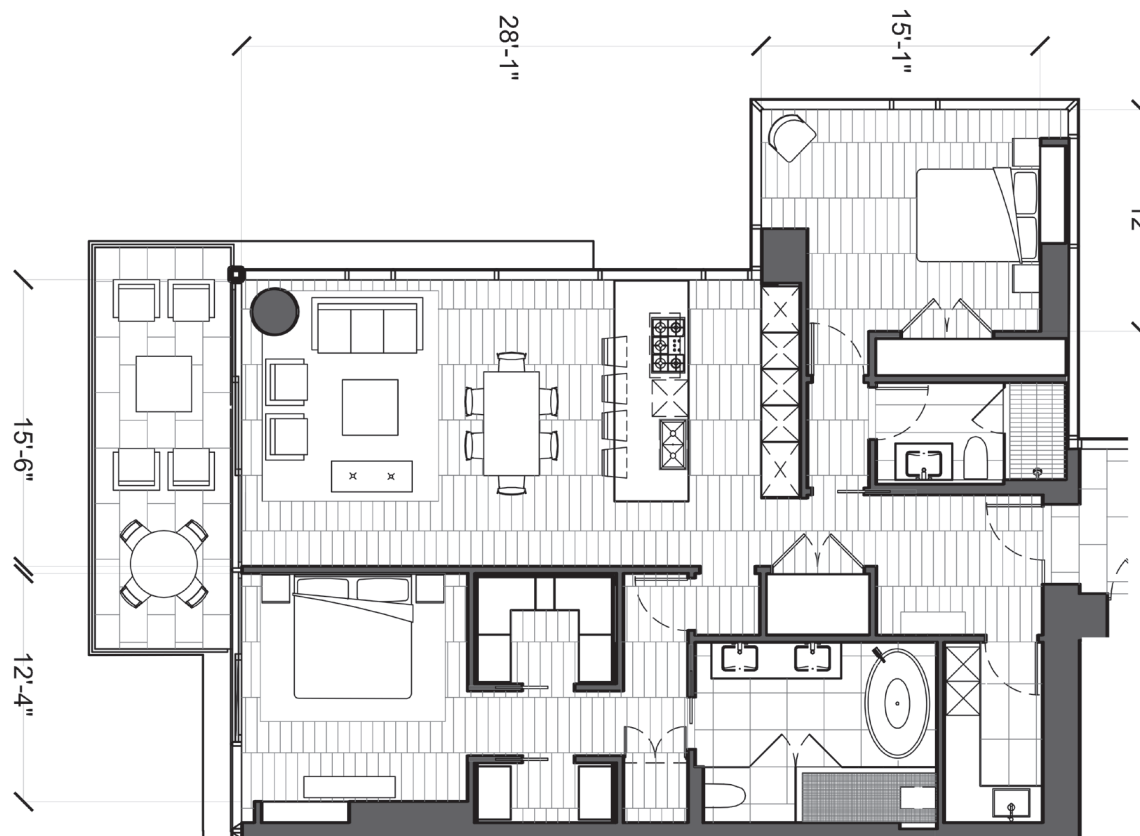
Sunset

Diamond Head

Ocean

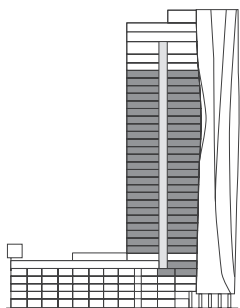
Howard Hughes.

www.wardvillage.com



8-31

5-6



Scale: Not to scale. All dimensions are approximate.

DISCLAIMER

Obtain the Property Report required by Federal law and read it before signing anything. No Federal agency has judged the merits or value, if any, of this property. Ward Village is a proposed planned master development in Honolulu, Hawai'i that does not yet exist. Photos and drawings and other visual depictions in this advertisement are for illustrative purposes only and do not represent the amenities or facilities in Ward Village and should not be relied upon in deciding to purchase or lease an interest in the development. The Developer makes no guarantee, representation or warranty whatsoever that the developments, facilities or improvements depicted will ultimately appear as shown. This is not intended to be an offering or solicitation of sale. Square footage figures for each residence shown herein are approximations and no representation is made as to the accuracy of such figures. Exclusive Project Broker Ward Village Properties LLC. Copyright © 2016.



WARD VILLAGE.

HONOLULU, HI

- WAIEA -

1118 ALA MOANA

RESIDENCE E

LEVELS

5-6, 8-31

3 bedroom
2.5 bathroom

Interior Size

1,991-2,045 Sq Ft / 185-190 Sq M

Foyer Size

140 Sq Ft / 13 Sq M

Lanai Size

63-123 Sq Ft / 6-11 Sq M

Mountain

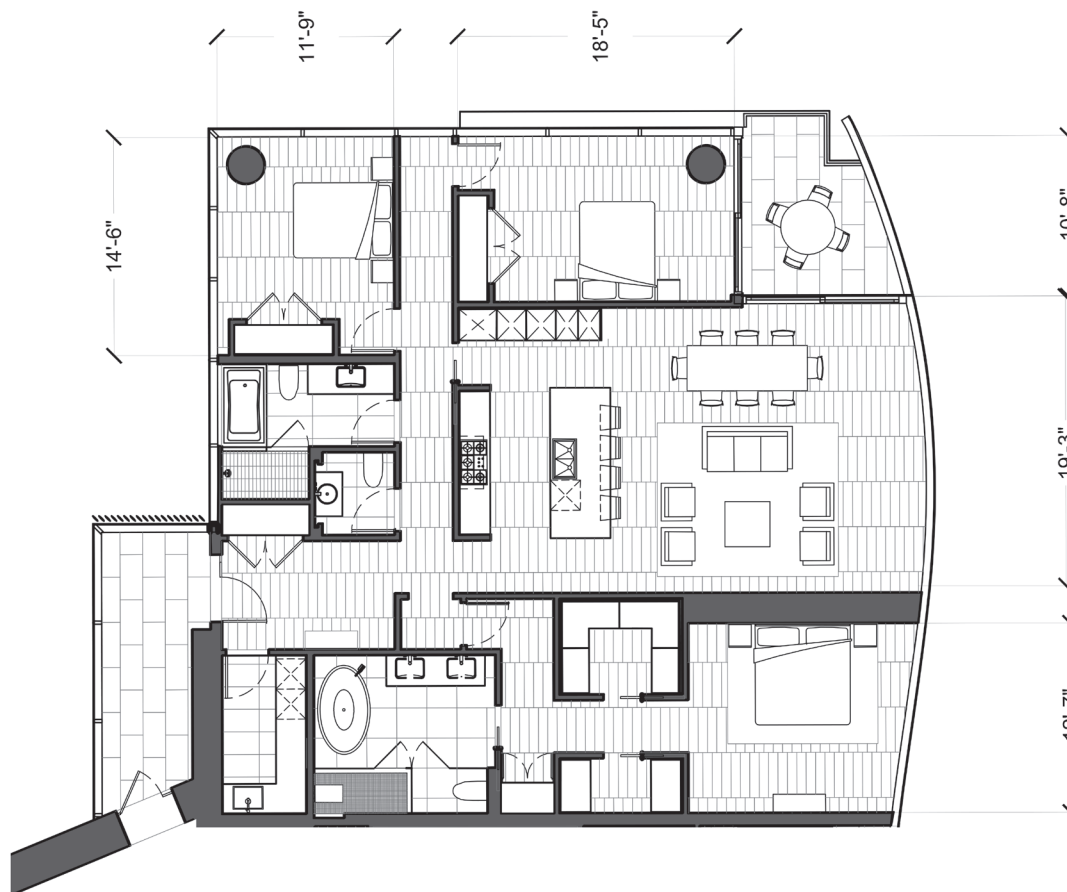
Sunset

Diamond Head

Ocean

Howard Hughes.

www.wardvillage.com



8-31

5-6

Scale: Not to scale. All dimensions are approximate.

DISCLAIMER

Obtain the Property Report required by Federal law and read it before signing anything. No Federal agency has judged the merits or value, if any, of this property. Ward Village is a proposed planned master development in Honolulu, Hawai'i that does not yet exist. Photos and drawings and other visual depictions in this advertisement are for illustrative purposes only and do not represent the amenities or facilities in Ward Village and should not be relied upon in deciding to purchase or lease an interest in the development. The Developer makes no guarantee, representation or warranty whatsoever that the developments, facilities or improvements depicted will ultimately appear as shown. This is not intended to be an offering or solicitation of sale. Square footage figures for each residence shown herein are approximations and no representation is made as to the accuracy of such figures. Exclusive Project Broker Ward Village Properties LLC. Copyright © 2016.



WARD VILLAGE.

HONOLULU, HI

- WAIEA -

1118 ALA MOANA

RESIDENCE E - 2 BED
OPTION WITH FAMILY ROOM

LEVELS

5-6, 8-31

2 bedroom
2.5 bathroom
Family room

Interior Size

1,991-2,045 Sq Ft / 185-190 Sq M

Foyer Size

140 Sq Ft / 13 Sq M

Lanai Size

63-123 Sq Ft / 6-11 Sq M

Mountain

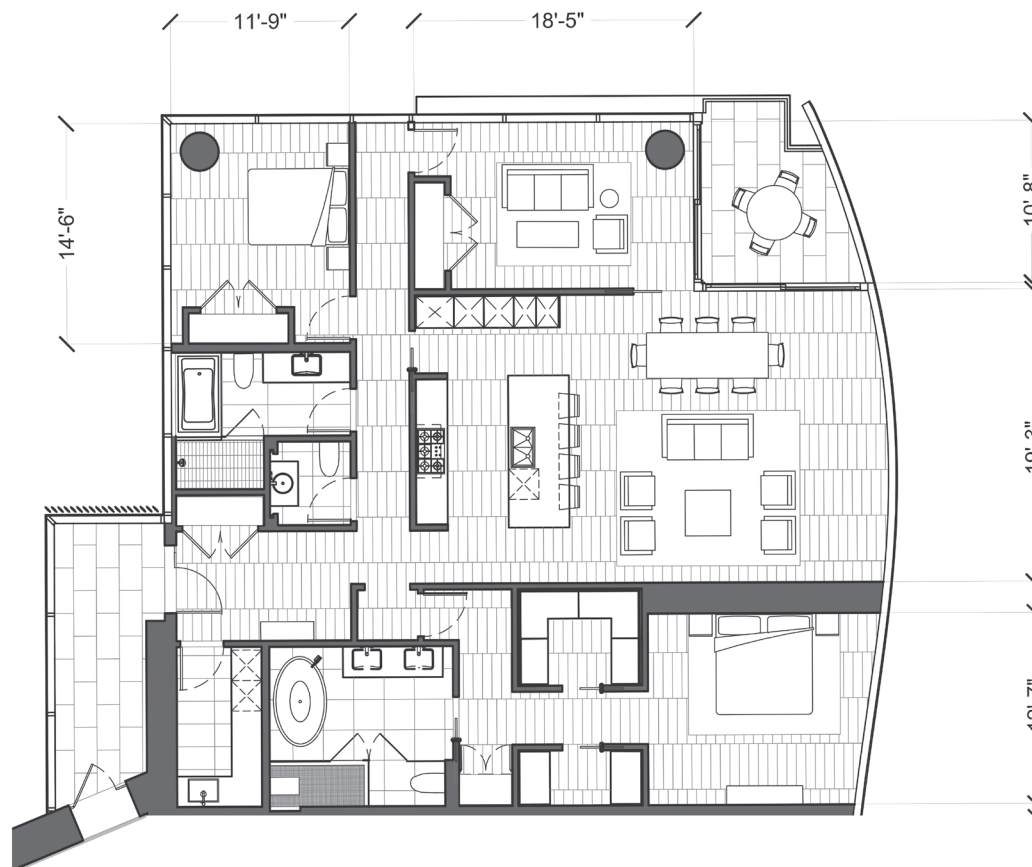
Sunset

Diamond Head

Ocean

Howard Hughes.

www.wardvillage.com



8-31

5-6

Scale: Not to scale. All dimensions are approximate.

DISCLAIMER

Obtain the Property Report required by Federal law and read it before signing anything. No Federal agency has judged the merits or value, if any, of this property. Ward Village is a proposed planned master development in Honolulu, Hawai'i that does not yet exist. Photos and drawings and other visual depictions in this advertisement are for illustrative purposes only and do not represent the amenities or facilities in Ward Village and should not be relied upon in deciding to purchase or lease an interest in the development. The Developer makes no guarantee, representation or warranty whatsoever that the developments, facilities or improvements depicted will ultimately appear as shown. This is not intended to be an offering or solicitation of sale. Square footage figures for each residence shown herein are approximations and no representation is made as to the accuracy of such figures. Exclusive Project Broker Ward Village Properties LLC. Copyright © 2016.



WARD VILLAGE.

HONOLULU, HI

- WAIEA -
1118 ALA MOANA

RESIDENCE F

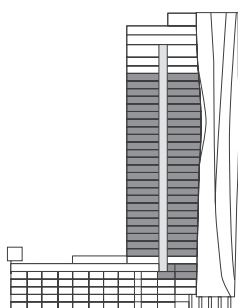
LEVELS

5-6, 8-31

2 bedroom
2.5 bathroom

Interior Size

1,869-2,069 Sq Ft / 174-192 Sq M



8-31

5-6

Scale: Not to scale. All dimensions are approximate.

Mountain

Sunset

Diamond Head

Ocean

Howard Hughes.

www.wardvillage.com

DISCLAIMER

Obtain the Property Report required by Federal law and read it before signing anything. No Federal agency has judged the merits or value, if any, of this property. Ward Village is a proposed planned master development in Honolulu, Hawai'i that does not yet exist. Photos and drawings and other visual depictions in this advertisement are for illustrative purposes only and do not represent the amenities or facilities in Ward Village and should not be relied upon in deciding to purchase or lease an interest in the development. The Developer makes no guarantee, representation or warranty whatsoever that the developments, facilities or improvements depicted will ultimately appear as shown. This is not intended to be an offering or solicitation of sale. Square footage figures for each residence shown herein are approximations and no representation is made as to the accuracy of such figures. Exclusive Project Broker Ward Village Properties LLC. Copyright © 2016.



WARD VILLAGE®

HONOLULU, HI

- WAIEA -
1118 ALA MOANA

RESIDENCE A & F
COMBINATION UNIT

LEVELS

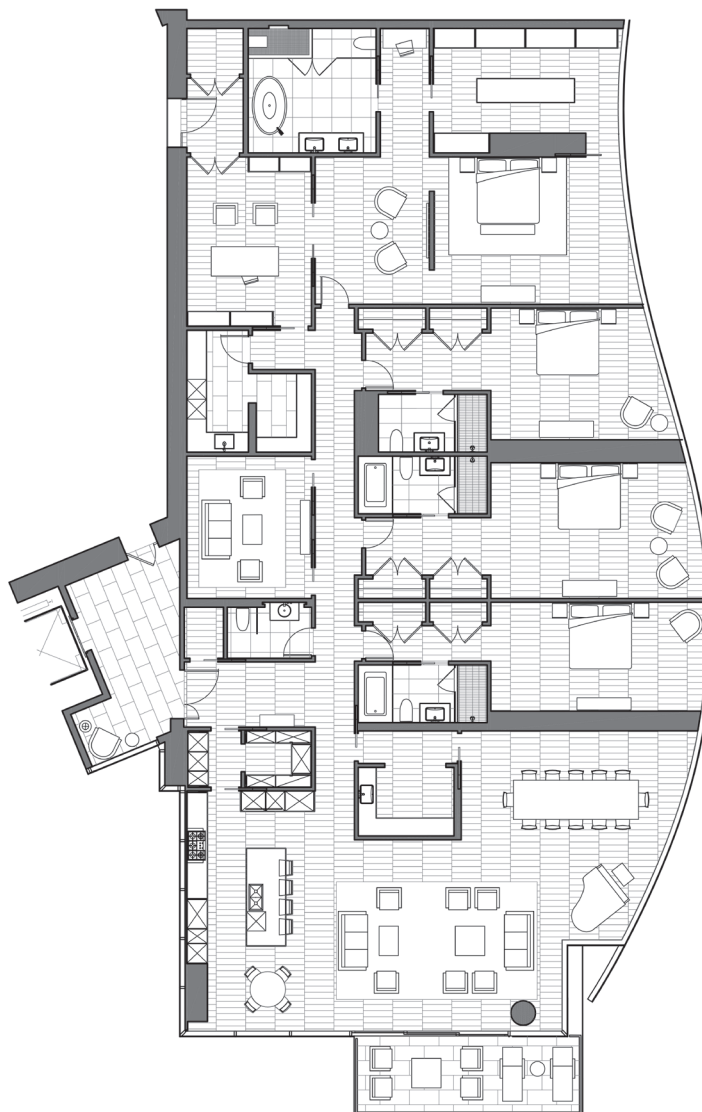
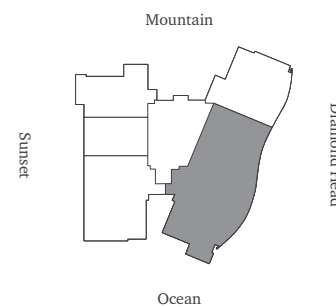
5-6, 8-31*

4 bedroom
4.5 bathroom
Den
Office
Service/Office Entry
Butler pantry

Interior Size
4,555-5,140 Sq Ft / 423-478 Sq M**

*Subject to availability

**Refer to condominium map for actual size
of combined units on a particular floor.



8 - 31

5 - 6



Scale: Not to scale. All dimensions are approximate.

DISCLAIMER

Obtain the Property Report required by Federal law and read it before signing anything. No Federal agency has judged the merits or value, if any, of this property. Ward Village is a proposed planned master development in Honolulu, Hawai'i that does not yet exist. Photos and drawings and other visual depictions in this advertisement are for illustrative purposes only and do not represent the amenities or facilities in Ward Village and should not be relied upon in deciding to purchase or lease an interest in the development. The Developer makes no guarantee, representation or warranty whatsoever that the developments, facilities or improvements depicted will ultimately appear as shown. This is not intended to be an offering or solicitation of sale. Square footage figures for each residence shown herein are approximations and no representation is made as to the accuracy of such figures. Exclusive Project Broker Ward Village Properties LLC. Copyright © 2016.

Howard Hughes®

www.wardvillage.com



WARD VILLAGE.

HONOLULU, HI

- WAIEA -
1118 ALA MOANA

VILLA I

LEVELS

01-02

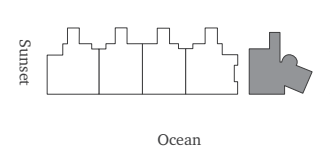
3 bedroom
4 bathroom
2-car garage
Grand lanai

Interior Size
2,866 Sq Ft / 266 Sq M

Foyer Size
298 Sq Ft / 28 Sq M

Lanai Size
2,272 Sq Ft / 211 Sq M

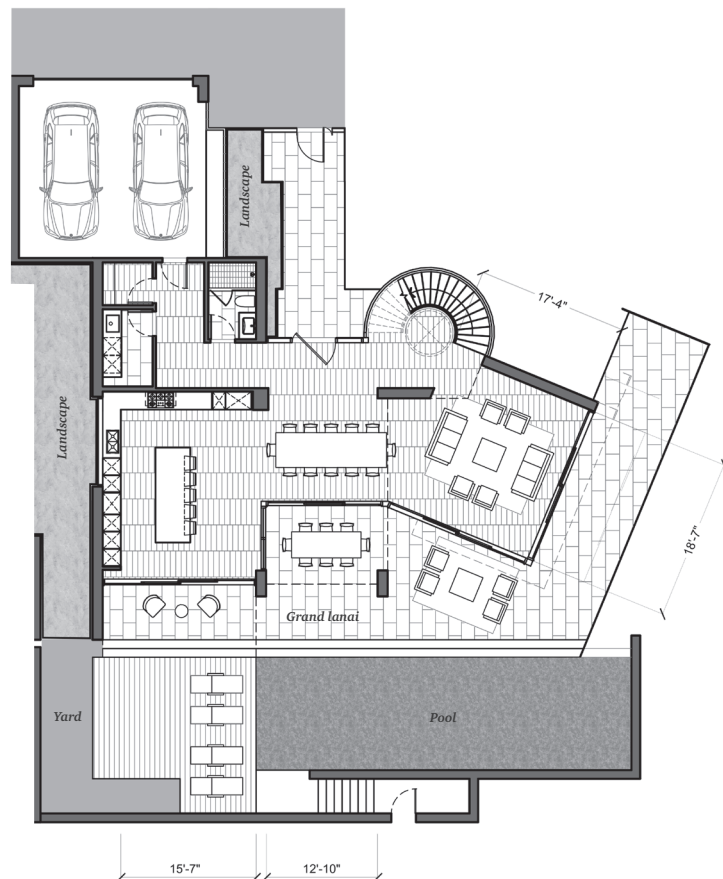
Mountain



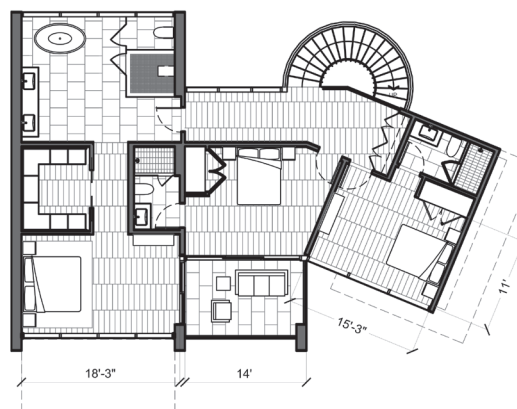
Ocean

Howard Hughes.

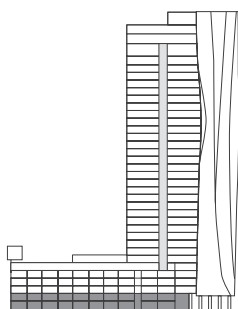
www.wardvillage.com



Ground level 1



Level 2



1-2

Scale: Not to scale. All dimensions are approximate.

DISCLAIMER

Obtain the Property Report required by Federal law and read it before signing anything. No Federal agency has judged the merits or value, if any, of this property. Ward Village is a proposed planned master development in Honolulu, Hawai'i that does not yet exist. Photos and drawings and other visual depictions in this advertisement are for illustrative purposes only and do not represent the amenities or facilities in Ward Village and should not be relied upon in deciding to purchase or lease an interest in the development. The Developer makes no guarantee, representation or warranty whatsoever that the developments, facilities or improvements depicted will ultimately appear as shown. This is not intended to be an offering or solicitation of sale. Square footage figures for each residence shown herein are approximations and no representation is made as to the accuracy of such figures. Exclusive Project Broker Ward Village Properties LLC. Copyright © 2016.



WARD VILLAGE.

HONOLULU, HI

- WAIEA -
1118 ALA MOANA

VILLA 2

LEVELS

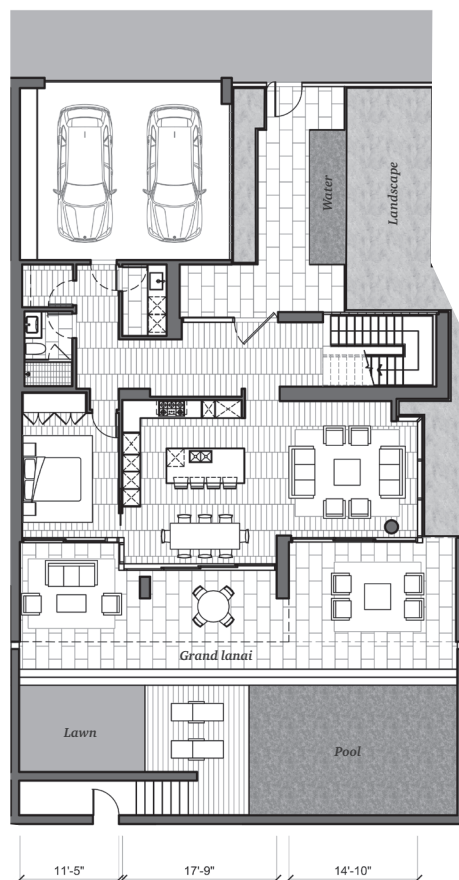
01-02

3 bedroom
3 bathroom
2-car garage
Grand lanai

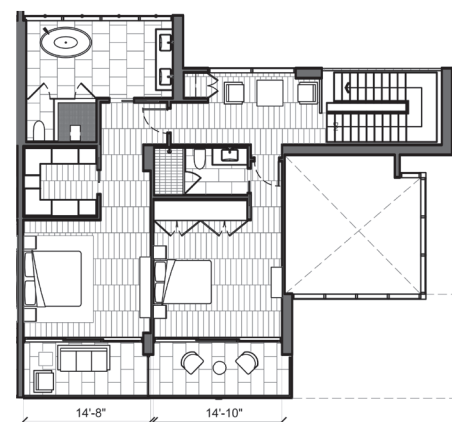
Interior Size
2,528 Sq Ft / 235 Sq M

Foyer Size
664 Sq Ft / 62 Sq M

Lanai Size
1,685 Sq Ft / 157 Sq M

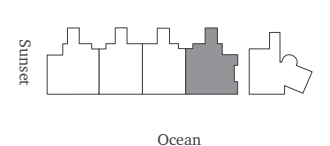


Ground level 1



Level 2

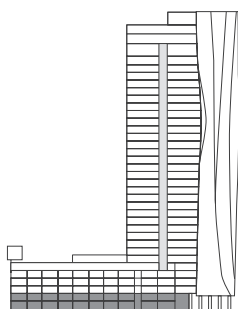
Mountain



Ocean

Howard Hughes.

www.wardvillage.com



1-2

Scale: Not to scale. All dimensions are approximate.

DISCLAIMER

Obtain the Property Report required by Federal law and read it before signing anything. No Federal agency has judged the merits or value, if any, of this property. Ward Village is a proposed planned master development in Honolulu, Hawai'i that does not yet exist. Photos and drawings and other visual depictions in this advertisement are for illustrative purposes only and do not represent the amenities or facilities in Ward Village and should not be relied upon in deciding to purchase or lease an interest in the development. The Developer makes no guarantee, representation or warranty whatsoever that the developments, facilities or improvements depicted will ultimately appear as shown. This is not intended to be an offering or solicitation of sale. Square footage figures for each residence shown herein are approximations and no representation is made as to the accuracy of such figures. Exclusive Project Broker Ward Village Properties LLC. Copyright © 2016.



WARD VILLAGE.

HONOLULU, HI

- WAIEA -
1118 ALA MOANA

VILLA 3

LEVELS

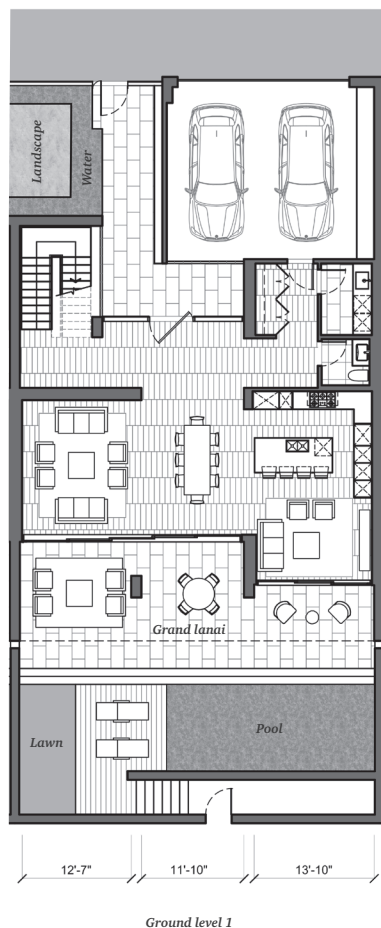
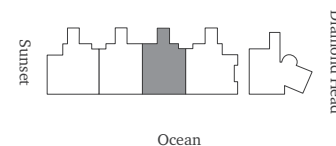
01-02

3 bedroom
3.5 bathroom
2-car garage
Grand lanai

Interior Size
2,682 Sq Ft / 249 Sq M
Foyer Size
394 Sq Ft / 37 Sq M
Lanai Size
1,451 Sq Ft / 135 Sq M

*Subject to availability

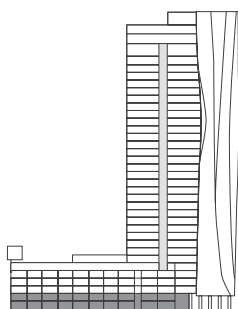
Mountain



Ground level 1



Level 2



1-2

Scale: Not to scale. All dimensions are approximate.

DISCLAIMER

Obtain the Property Report required by Federal law and read it before signing anything. No Federal agency has judged the merits or value, if any, of this property. Ward Village is a proposed planned master development in Honolulu, Hawai'i that does not yet exist. Photos and drawings and other visual depictions in this advertisement are for illustrative purposes only and do not represent the amenities or facilities in Ward Village and should not be relied upon in deciding to purchase or lease an interest in the development. The Developer makes no guarantee, representation or warranty whatsoever that the developments, facilities or improvements depicted will ultimately appear as shown. This is not intended to be an offering or solicitation of sale. Square footage figures for each residence shown herein are approximations and no representation is made as to the accuracy of such figures. Exclusive Project Broker Ward Village Properties LLC. Copyright © 2016.

Howard Hughes.

www.wardvillage.com



WARD VILLAGE.

HONOLULU, HI

- WAIEA -
1118 ALA MOANA

VILLA 4

LEVELS

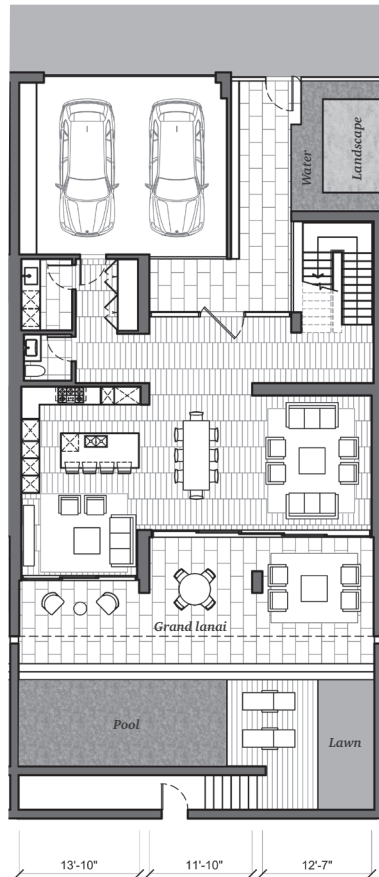
01-02

3 bedroom
3.5 bathroom
2-car garage
Grand lanai

Interior Size
2,682 Sq Ft / 249 Sq M

Foyer Size
394 Sq Ft / 37 Sq M

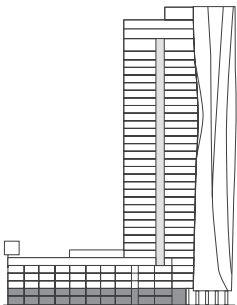
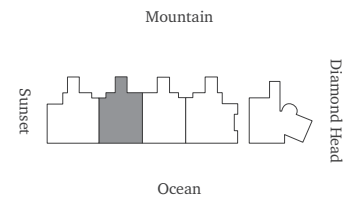
Lanai Size
1,451 Sq Ft / 135 Sq M



Ground level 1



Level 2



1-2

Scale: Not to scale. All dimensions are approximate.

DISCLAIMER

Obtain the Property Report required by Federal law and read it before signing anything. No Federal agency has judged the merits or value, if any, of this property. Ward Village is a proposed planned master development in Honolulu, Hawai'i that does not yet exist. Photos and drawings and other visual depictions in this advertisement are for illustrative purposes only and do not represent the amenities or facilities in Ward Village and should not be relied upon in deciding to purchase or lease an interest in the development. The Developer makes no guarantee, representation or warranty whatsoever that the developments, facilities or improvements depicted will ultimately appear as shown. This is not intended to be an offering or solicitation of sale. Square footage figures for each residence shown herein are approximations and no representation is made as to the accuracy of such figures. Exclusive Project Broker Ward Village Properties LLC. Copyright © 2016.

Howard Hughes.

www.wardvillage.com



WARD VILLAGE.

HONOLULU, HI

- WAIEA -
1118 ALA MOANA

VILLA 5

LEVELS

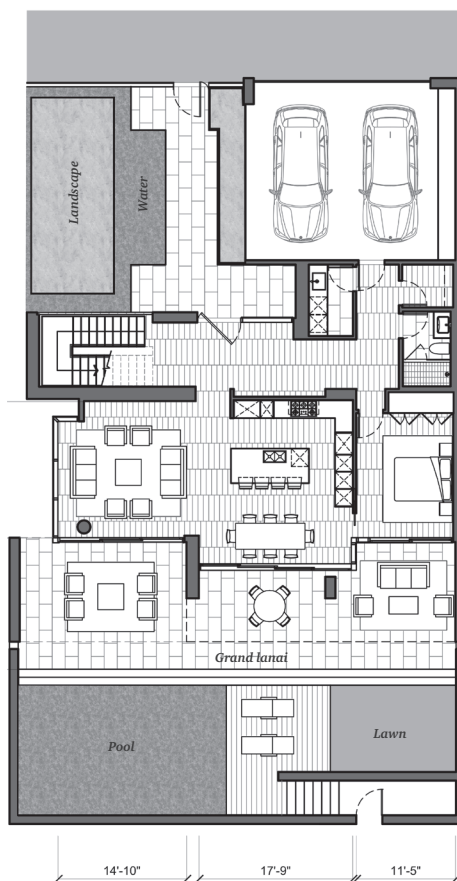
01-02

3 bedroom
3 bathroom
2-car garage
Grand lanai

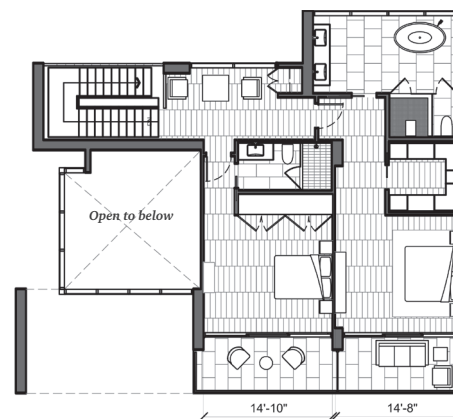
Interior Size
2,528 Sq Ft / 235 Sq M

Foyer Size
671 Sq Ft / 62 Sq M

Lanai Size
1,685 Sq Ft / 157 Sq M

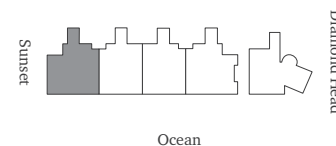


Ground level 1



Level 2

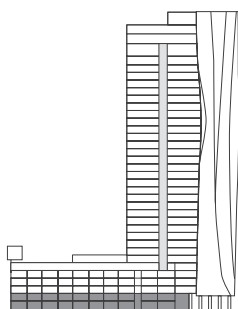
Mountain



Ocean

Howard Hughes.

www.wardvillage.com



1-2

Scale: Not to scale. All dimensions are approximate.

DISCLAIMER

Obtain the Property Report required by Federal law and read it before signing anything. No Federal agency has judged the merits or value, if any, of this property. Ward Village is a proposed planned master development in Honolulu, Hawai'i that does not yet exist. Photos and drawings and other visual depictions in this advertisement are for illustrative purposes only and do not represent the amenities or facilities in Ward Village and should not be relied upon in deciding to purchase or lease an interest in the development. The Developer makes no guarantee, representation or warranty whatsoever that the developments, facilities or improvements depicted will ultimately appear as shown. This is not intended to be an offering or solicitation of sale. Square footage figures for each residence shown herein are approximations and no representation is made as to the accuracy of such figures. Exclusive Project Broker Ward Village Properties LLC. Copyright © 2016.



WARD VILLAGE.

HONOLULU, HI

- WAIEA -
1118 ALA MOANA

VILLA 6

LEVELS

03-05

4 bedroom*
5 bathroom
Sky lanai

Interior Size

3,603 Sq Ft / 335 Sq M

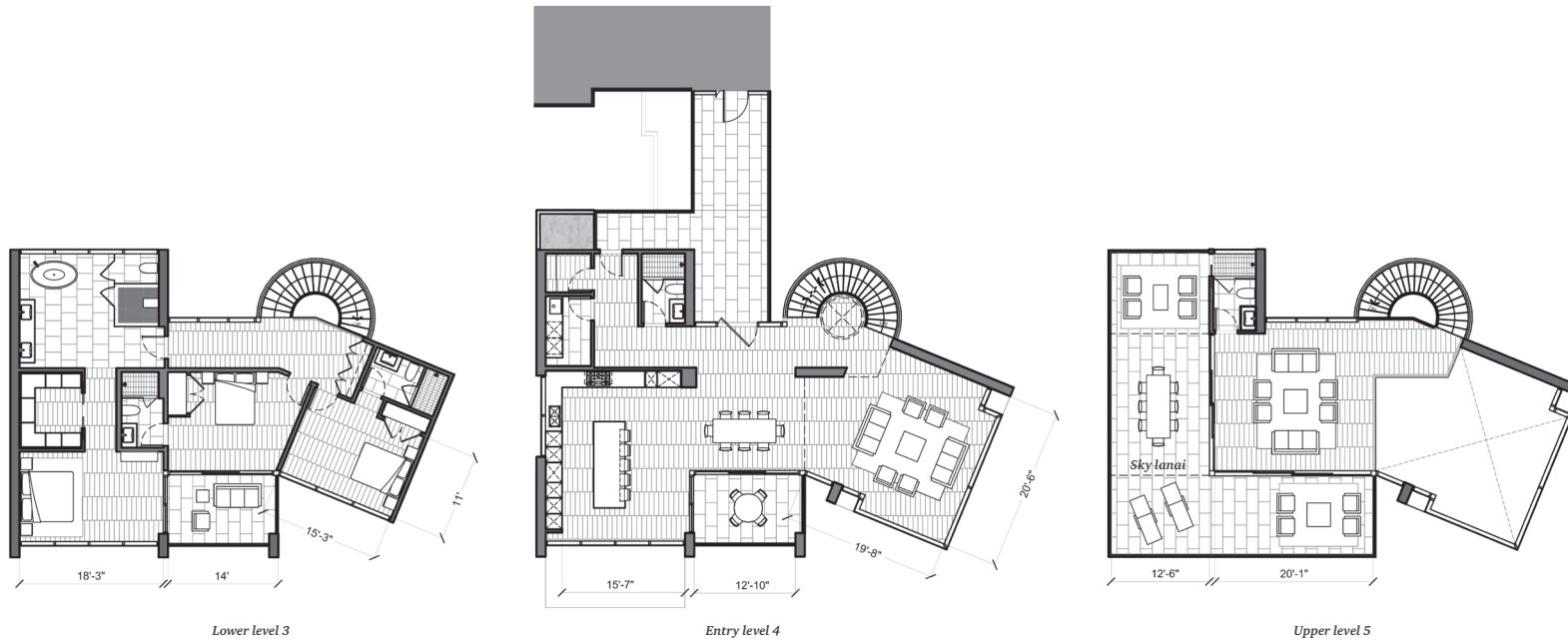
Foyer Size

367 Sq Ft / 34 Sq M

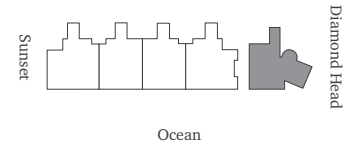
Lanai Size

948 Sq Ft / 88 Sq M

*Level 5 room may be used as 4th bedroom



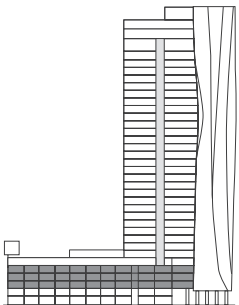
Mountain



Ocean

Howard Hughes.

www.wardvillage.com



3-5

Scale: Not to scale. All dimensions are approximate.

DISCLAIMER

Obtain the Property Report required by Federal law and read it before signing anything. No Federal agency has judged the merits or value, if any, of this property. Ward Village is a proposed planned master development in Honolulu, Hawai'i that does not yet exist. Photos and drawings and other visual depictions in this advertisement are for illustrative purposes only and do not represent the amenities or facilities in Ward Village and should not be relied upon in deciding to purchase or lease an interest in the development. The Developer makes no guarantee, representation or warranty whatsoever that the developments, facilities or improvements depicted will ultimately appear as shown. This is not intended to be an offering or solicitation of sale. Square footage figures for each residence shown herein are approximations and no representation is made as to the accuracy of such figures. Exclusive Project Broker Ward Village Properties LLC. Copyright © 2016.



WARD VILLAGE.

HONOLULU, HI

- WAIEA -
1118 ALA MOANA

VILLA 7

LEVELS

03-05

5 bedroom*
5 bathroom
Sky lanai

Interior Size
3,490 Sq Ft / 324 Sq M

Foyer Size
434 Sq Ft / 40 Sq M

Lanai Size
1,364 Sq Ft / 127 Sq M

*Level 5 room may be used as 5th bedroom

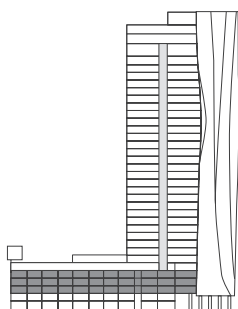
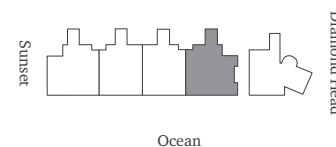


Lower level 3

Entry level 4

Upper level 5

Mountain



3-5

Scale: Not to scale. All dimensions are approximate.

DISCLAIMER

Obtain the Property Report required by Federal law and read it before signing anything. No Federal agency has judged the merits or value, if any, of this property. Ward Village is a proposed planned master development in Honolulu, Hawai'i that does not yet exist. Photos and drawings and other visual depictions in this advertisement are for illustrative purposes only and do not represent the amenities or facilities in Ward Village and should not be relied upon in deciding to purchase or lease an interest in the development. The Developer makes no guarantee, representation or warranty whatsoever that the developments, facilities or improvements depicted will ultimately appear as shown. This is not intended to be an offering or solicitation of sale. Square footage figures for each residence shown herein are approximations and no representation is made as to the accuracy of such figures. Exclusive Project Broker Ward Village Properties LLC. Copyright © 2016.

Howard Hughes.

www.wardvillage.com



WARD VILLAGE.

HONOLULU, HI

- WAIEA -
1118 ALA MOANA

VILLA 8

LEVELS

03-05

4 bedroom*
4.5 bathroom
Sky lanai

Interior Size

3,264 Sq Ft / 303 Sq M

Foyer Size

422 Sq Ft / 39 Sq M

Lanai Size

1,312 Sq Ft / 122 Sq M

*Level 5 room may be used as 4th bedroom

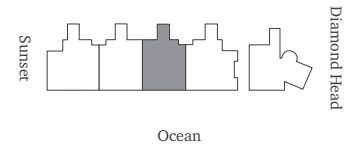


Lower level 3

Entry level 4

Upper level 5

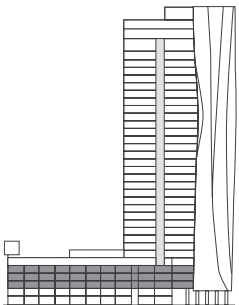
Mountain



Ocean

Howard Hughes.

www.wardvillage.com



3-5

Scale: Not to scale. All dimensions are approximate.

DISCLAIMER

Obtain the Property Report required by Federal law and read it before signing anything. No Federal agency has judged the merits or value, if any, of this property. Ward Village is a proposed planned master development in Honolulu, Hawai'i that does not yet exist. Photos and drawings and other visual depictions in this advertisement are for illustrative purposes only and do not represent the amenities or facilities in Ward Village and should not be relied upon in deciding to purchase or lease an interest in the development. The Developer makes no guarantee, representation or warranty whatsoever that the developments, facilities or improvements depicted will ultimately appear as shown. This is not intended to be an offering or solicitation of sale. Square footage figures for each residence shown herein are approximations and no representation is made as to the accuracy of such figures. Exclusive Project Broker Ward Village Properties LLC. Copyright © 2016.



WARD VILLAGE®

HONOLULU, HI

- WAIEA -
1118 ALA MOANA

VILLA 9

LEVELS

03-05

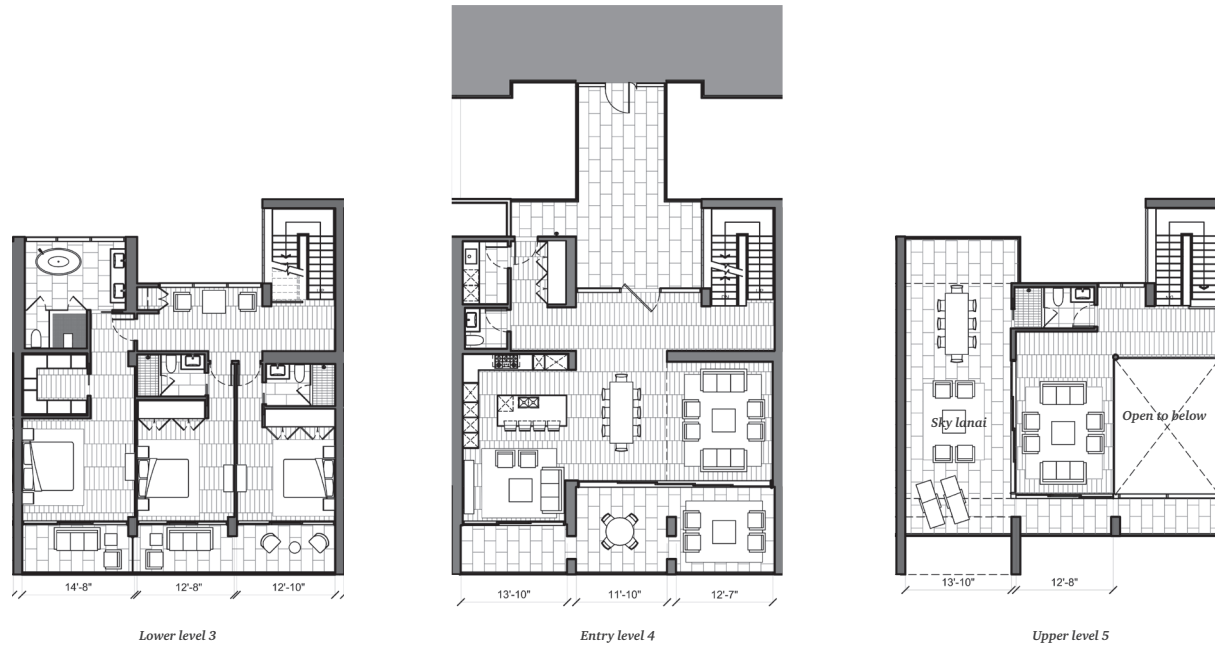
4 bedroom*
4.5 bathroom
Sky lanai

Interior Size
3,264 Sq Ft / 303 Sq M

Foyer Size
422 Sq Ft / 39 Sq M

Lanai Size
1,312 Sq Ft / 122 Sq M

*Level 5 room may be used as 4th bedroom

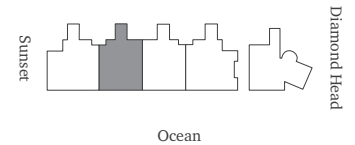


Lower level 3

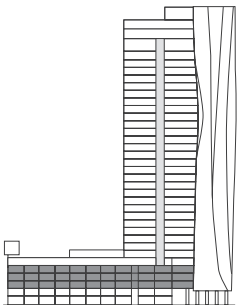
Entry level 4

Upper level 5

Mountain



Ocean



3-5

Scale: Not to scale. All dimensions are approximate.

DISCLAIMER

Obtain the Property Report required by Federal law and read it before signing anything. No Federal agency has judged the merits or value, if any, of this property. Ward Village is a proposed planned master development in Honolulu, Hawai'i that does not yet exist. Photos and drawings and other visual depictions in this advertisement are for illustrative purposes only and do not represent the amenities or facilities in Ward Village and should not be relied upon in deciding to purchase or lease an interest in the development. The Developer makes no guarantee, representation or warranty whatsoever that the developments, facilities or improvements depicted will ultimately appear as shown. This is not intended to be an offering or solicitation of sale. Square footage figures for each residence shown herein are approximations and no representation is made as to the accuracy of such figures. Exclusive Project Broker Ward Village Properties LLC. Copyright © 2016.

Howard Hughes®

www.wardvillage.com



WARD VILLAGE.

HONOLULU, HI

- WAIEA -
1118 ALA MOANA

VILLA 10

LEVELS

03-05

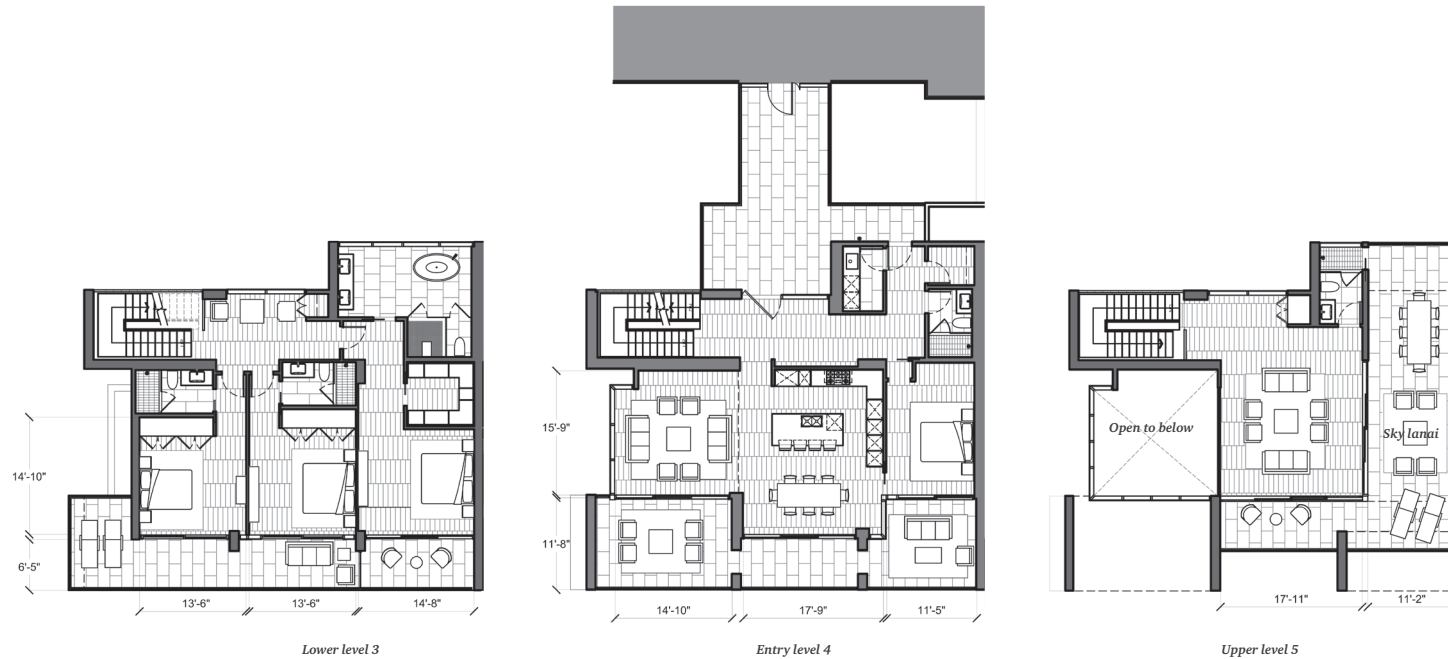
5 bedroom*
5 bathroom
Sky lanai

Interior Size
3,490 Sq Ft / 324 Sq M

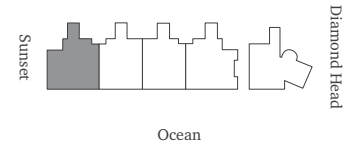
Foyer Size
434 Sq Ft / 40 Sq M

Lanai Size
1,364 Sq Ft / 127 Sq M

*Level 5 room may be used as 5th bedroom



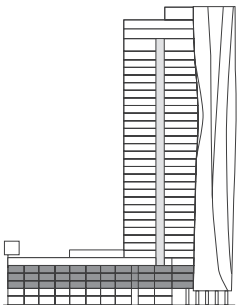
Mountain



Ocean

Howard Hughes.

www.wardvillage.com



3-5

Scale: Not to scale. All dimensions are approximate.

DISCLAIMER

Obtain the Property Report required by Federal law and read it before signing anything. No Federal agency has judged the merits or value, if any, of this property. Ward Village is a proposed planned master development in Honolulu, Hawai'i that does not yet exist. Photos and drawings and other visual depictions in this advertisement are for illustrative purposes only and do not represent the amenities or facilities in Ward Village and should not be relied upon in deciding to purchase or lease an interest in the development. The Developer makes no guarantee, representation or warranty whatsoever that the developments, facilities or improvements depicted will ultimately appear as shown. This is not intended to be an offering or solicitation of sale. Square footage figures for each residence shown herein are approximations and no representation is made as to the accuracy of such figures. Exclusive Project Broker Ward Village Properties LLC. Copyright © 2016.



WARD VILLAGE.

HONOLULU, HI

- WAIEA -
1118 ALA MOANA

PENTHOUSE A

LEVELS
32-34

4 bedroom
4.5 bathroom
Den
Service entry

Interior Size
4,131-4,192 SqFt / 384-386 SqM

Foyer Size
202 SqFt / 19 SqM

Lanai Size
154 SqFt / 14 SqM

Mountain

Sunset

Diamond Head

Ocean

Howard Hughes.

www.wardvillage.com



NOT TO SCALE

DISCLAIMER
Obtain the Property Report required by Federal law and read it before signing anything. No Federal agency has judged the merits or value, if any, of this property. Ward Village is a proposed planned master development in Honolulu, Hawai'i that does not yet exist. Photos and drawings and other visual depictions in this advertisement are for illustrative purposes only and do not represent the amenities or facilities in Ward Village and should not be relied upon in deciding to purchase or lease an interest in the development. The Developer makes no guarantee, representation or warranty whatsoever that the developments, facilities or improvements depicted will ultimately appear as shown. This is not intended to be an offering or solicitation of sale. Square footage figures for each residence shown herein are approximations and no representation is made as to the accuracy of such figures. Exclusive Project Broker Ward Village Properties LLC. Copyright © 2016.



WARD VILLAGE.

HONOLULU, HI

- WAIEA -
1118 ALA MOANA

PENTHOUSE B

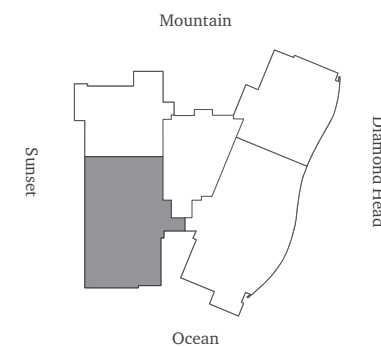
LEVELS
32-34

3 bedroom
3.5 bathroom
Den

Interior Size
3,033 SqFt/282 SqM

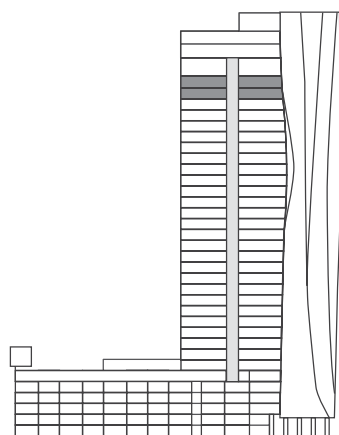
Foyer Size
244 SqFt/23 SqM

Lanai Size
336 SqFt/ 31 SqM

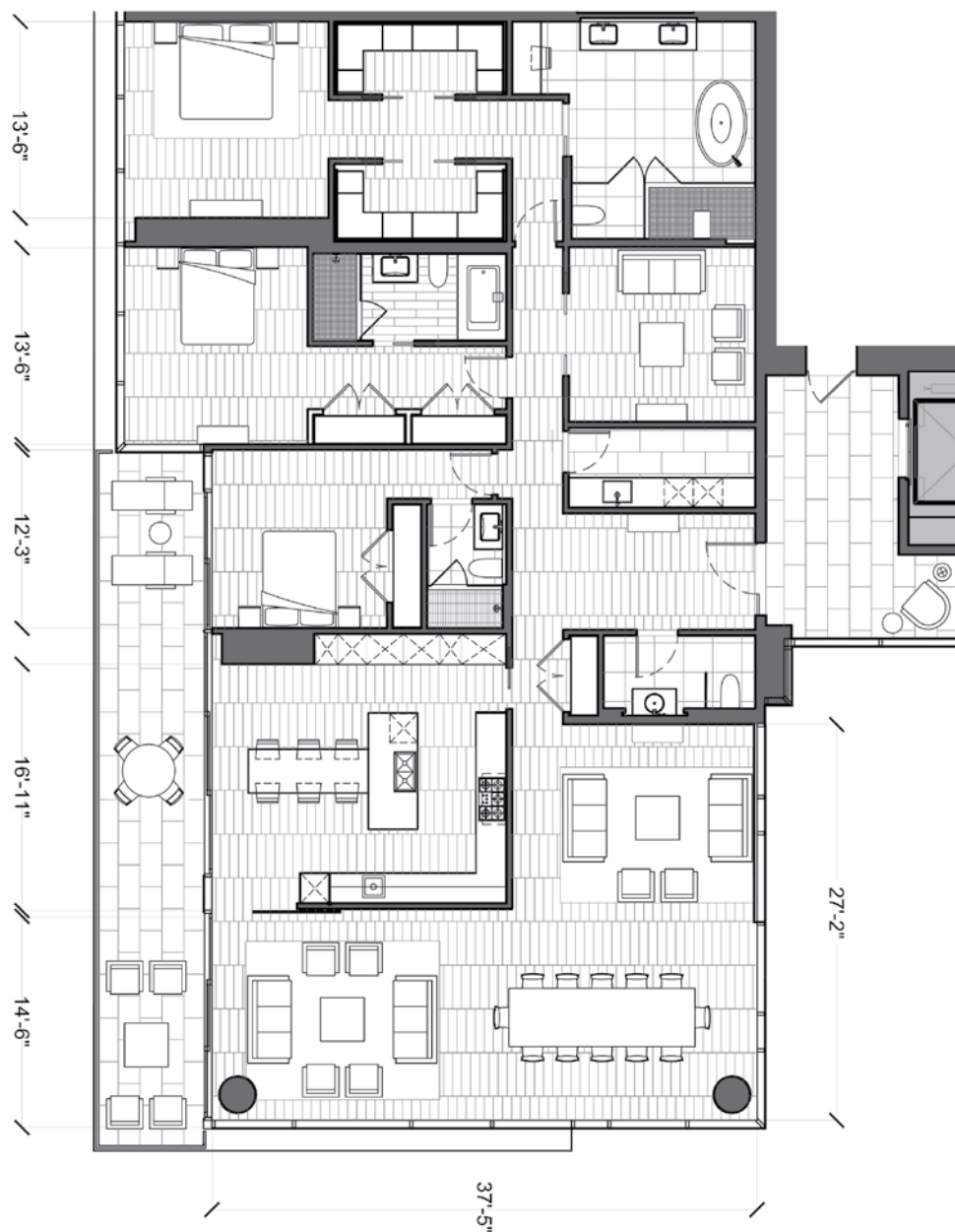


Howard Hughes.

www.wardvillage.com



NOT TO SCALE



DISCLAIMER
Obtain the Property Report required by Federal law and read it before signing anything. No Federal agency has judged the merits or value, if any, of this property. Ward Village is a proposed planned master development in Honolulu, Hawai'i that does not yet exist. Photos and drawings and other visual depictions in this advertisement are for illustrative purposes only and do not represent the amenities or facilities in Ward Village and should not be relied upon in deciding to purchase or lease an interest in the development. The Developer makes no guarantee, representation or warranty whatsoever that the developments, facilities or improvements depicted will ultimately appear as shown. This is not intended to be an offering or solicitation of sale. Square footage figures for each residence shown herein are approximations and no representation is made as to the accuracy of such figures. Exclusive Project Broker Ward Village Properties LLC. Copyright © 2016.



WARD VILLAGE®

HONOLULU, HI

- WAIEA -
1118 ALA MOANA

PENTHOUSE C

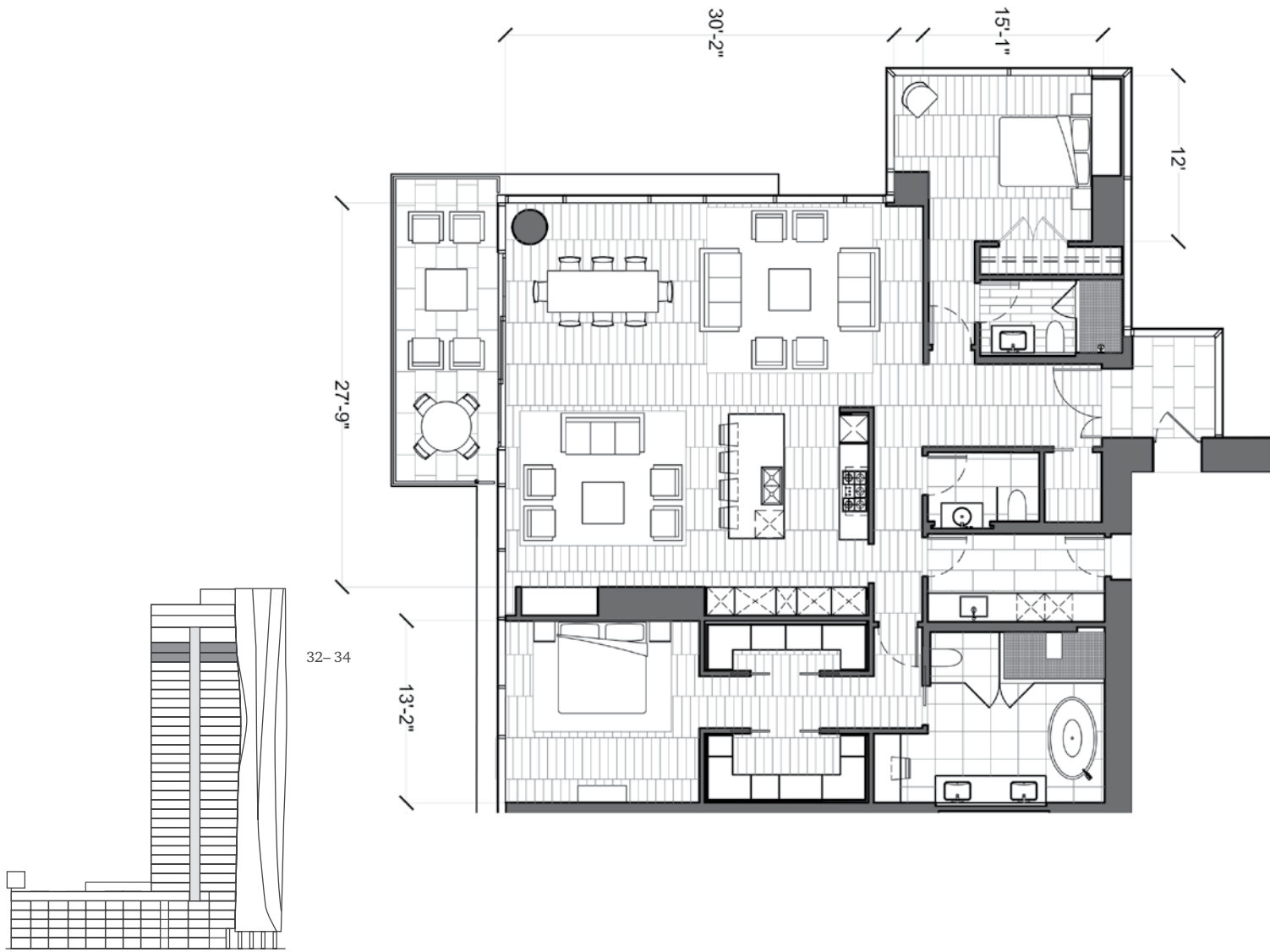
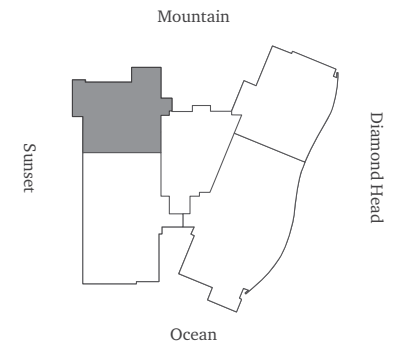
LEVELS
32-34

2 bedroom
2.5 bathroom
Service Entry

Interior Size
2,077 SqFt / 193 SqM

Foyer Size
63 SqFt / 6 SqM

Lanai Size
159 SqFt / 15 SqM



NOT TO SCALE

DISCLAIMER
Obtain the Property Report required by Federal law and read it before signing anything. No Federal agency has judged the merits or value, if any, of this property. Ward Village is a proposed planned master development in Honolulu, Hawai'i that does not yet exist. Photos and drawings and other visual depictions in this advertisement are for illustrative purposes only and do not represent the amenities or facilities in Ward Village and should not be relied upon in deciding to purchase or lease an interest in the development. The Developer makes no guarantee, representation or warranty whatsoever that the developments, facilities or improvements depicted will ultimately appear as shown. This is not intended to be an offering or solicitation of sale. Square footage figures for each residence shown herein are approximations and no representation is made as to the accuracy of such figures. Exclusive Project Broker Ward Village Properties LLC. Copyright © 2016.

Howard Hughes®

www.wardvillage.com



WARD VILLAGE.

HONOLULU, HI

- WAIEA -
1118 ALA MOANA

PENTHOUSE D

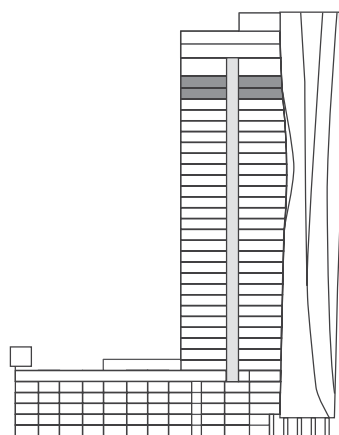
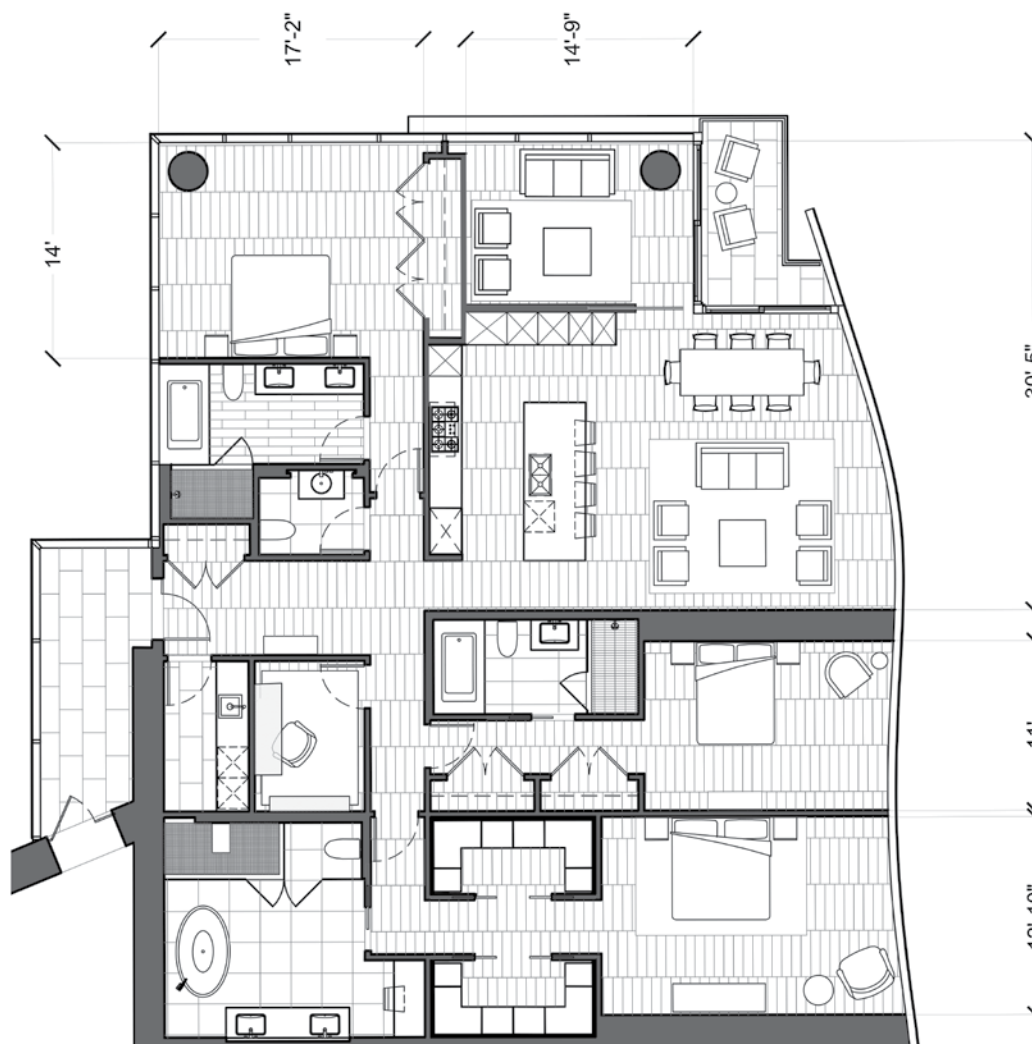
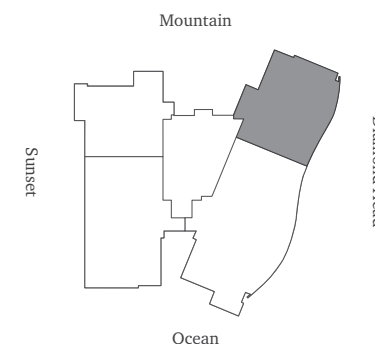
LEVELS
32-34

3 bedroom
3.5 bathroom
Den

Interior Size
2,636-2,675 SqFt/245-249 SqM

Foyer Size
130 SqFt/12 SqM

Lanai Size
80 SqFt / 7 SqM



NOT TO SCALE

DISCLAIMER

Obtain the Property Report required by Federal law and read it before signing anything. No Federal agency has judged the merits or value, if any, of this property. Ward Village is a proposed planned master development in Honolulu, Hawai'i that does not yet exist. Photos and drawings and other visual depictions in this advertisement are for illustrative purposes only and do not represent the amenities or facilities in Ward Village and should not be relied upon in deciding to purchase or lease an interest in the development. The Developer makes no guarantee, representation or warranty whatsoever that the developments, facilities or improvements depicted will ultimately appear as shown. This is not intended to be an offering or solicitation of sale. Square footage figures for each residence shown herein are approximations and no representation is made as to the accuracy of such figures. Exclusive Project Broker Ward Village Properties LLC. Copyright © 2016.

Howard Hughes

www.wardvillage.com



**GRAND
PENTHOUSE
LEVEL 35**

6 bedrooms, 6.5 bathrooms

Grand Open Living/Dining/Kitchen Space

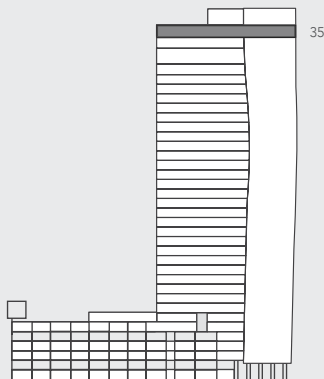
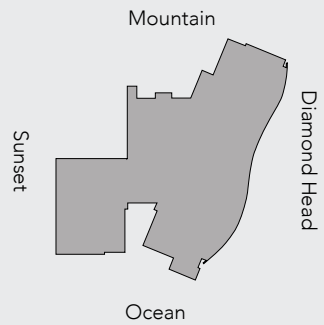
Rooftop infinity pool and sky lanai with
outdoor kitchen and pool house

INTERIOR

8,532 SQ FT / 792.6 SQ M

LANAI

2,043 SQ FT / 189.8 SQ M





GRAND PENTHOUSE

LEVEL 36

5 bedrooms, 5.5 bathrooms

Grand Open Living/Dining/Kitchen Space

Rooftop infinity pool and sky lanai with
outdoor kitchen and pool house

INTERIOR

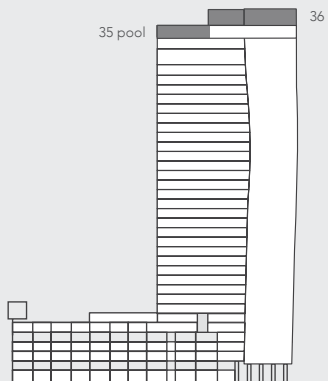
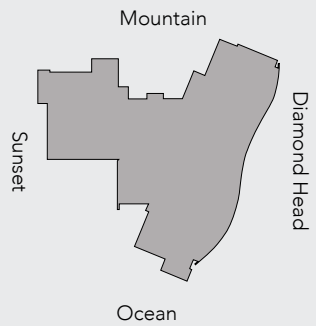
10,076 SQ FT / 936 SQ M

LANAI

1,357 SQ FT / 126 SQ M

PRIVATE ELEVATOR ENTRY

427 SQ FT / 39.7 SQ M





GRAND
PENTHOUSE
DUPLEX
LEVEL 35 & LEVEL 36

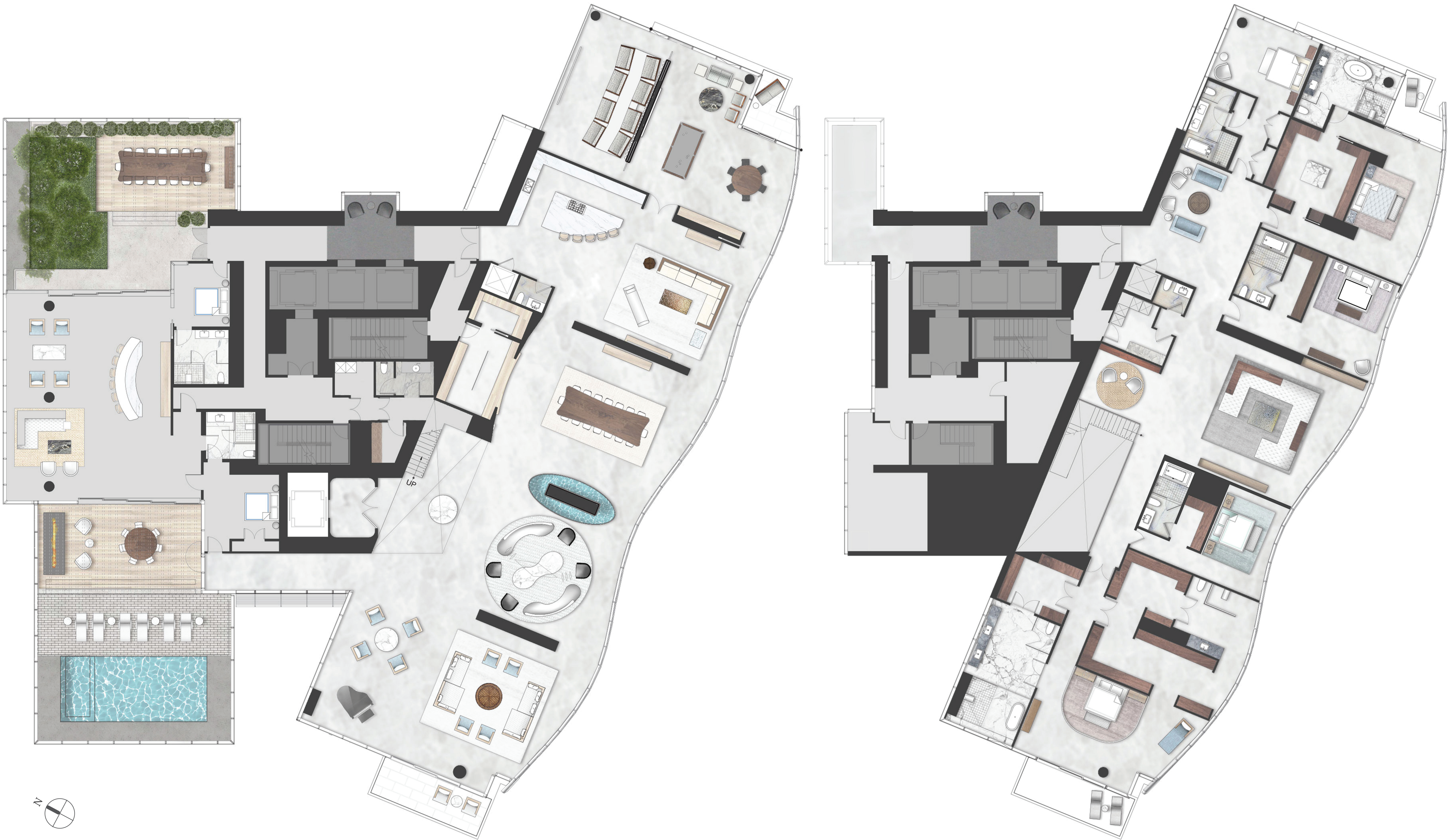
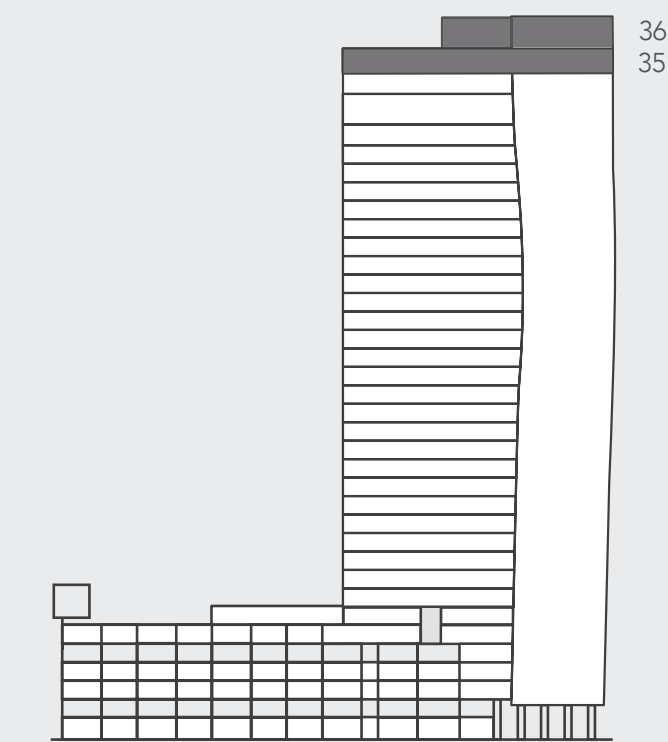
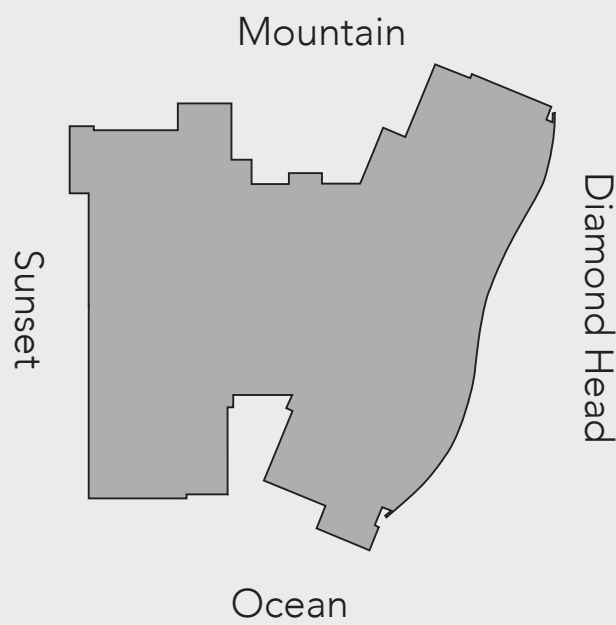
7 bedrooms, 8 bathrooms, 3 powder rooms
Grand Open Living/Dining/Kitchen Space
Rooftop infinity pool and sky lanai with out-
door kitchen and pool house

INTERIOR
18,608 SQ FT / 1716.6 SQ M*

LANAI
3,400 SQ FT / 334.3 SQ M*

L2 PRIVATE ELEVATOR ENTRY
427 SQ FT / 39.7 SQ M

* Combination of the two units to make up
the duplex.



SUSTAINABILITY

A MODEL COMMUNITY

Ward Village has been certified as LEED ND Platinum by the United States Green Building Council (USGBC). LEED ND stands for Leadership in Energy and Environmental Design in Neighborhood Development, and its certification criteria reward mixed-use development and pedestrian-friendly streets that encourage walking, bicycling and public transportation, and include public, open spaces. From its energy-efficient buildings to its numerous green spaces, Ward Village epitomizes the next generation of sustainable design. It is the largest LEED-ND Platinum project ever certified in the United States and the only one in Hawai'i. Every element of the community works to promote efficiency and create comfort for residents and visitors.

LEADERSHIP IN BUILDING DESIGN

Each new building in Ward Village is also planned to meet LEED certification. As an internationally recognized mark of excellence, LEED certification provides independent, third-party verification that our buildings are designed and built using strategies aimed at achieving high performance in key areas of human and environmental health: Sustainable site development, water savings, energy efficiency, materials selection and indoor environmental quality. Each building in Ward Village is thoughtfully planned to minimize environmental impact while providing exceptional comfort and quality.

SPECIFICATION

BUILDING FEATURES

- High-performance, double-glazed, low-e coated glass curtain wall system
- Building is targeting LEED (Leadership in Energy and Environmental Design) certification
- Centralized high efficiency air-conditioning and hot water systems
- 24/7 onsite and neighborhood courtesy patrols
- Limited access control system with gated parking
- Energy efficient LED lighting
- Dedicated service elevator
- Landscape design by internationally acclaimed firm SWA Group
- Dynamic landscape and hardscape blended with unique water features

INTERIOR

- Unsurpassed 360 degree views
- Up to 11'5" ceilings in Grand Penthouse
- Hardwood and stone flooring throughout entire residence
- Spacious master bathrooms with stunning onyx walls, and rain showers
- Stone and quartz composite counters
- Double walk-in closets with closet systems
- European cabinetry
- Complete suite of Miele kitchen appliances
- Gas cooking
- Wine refrigerators
- Plumbing fixtures by Dornbracht
- Toto water closets
- Motorized window shades
- Private infinity pool
- Sky lanai
- Private 4-car garage with dedicated discrete elevator lobby

BUILDING SERVICES

- Concierge service
- On-site resident manager and 24/7 resident specialists
- Luxury-appointed guest suites
- Onsite guest parking
- Optional valet parking

INDOOR AMENITIES

- Deluxe Wright Fit fitness center with yoga room and active fitness room
- Resort-style locker rooms with steam, sauna and treatment rooms
- Resident theater / performance room
- Resident dining rooms with catering and chef's kitchen
- Victoria Ward Library
- Howard Hughes Bar
- Quiet lounges
- Indoor golf simulator

OUTDOOR AMENITIES

- Infinity-edged ocean-view pool & hot tub
- Resident poolside cabanas
- Outdoor dining at resident barbecue pavilions
- Outdoor event lawn with bar and barbecue
- Children's play area with water feature
- Dog park